

# ILS or LOC Y RWY 31

LOC I-RCA <b>110.3</b>	APCH CRS <b>310°</b>	Rwy Ldg <b>13,497</b> TDZE <b>3192</b> Arprt Elev <b>3276</b>
---------------------------	-------------------------	--

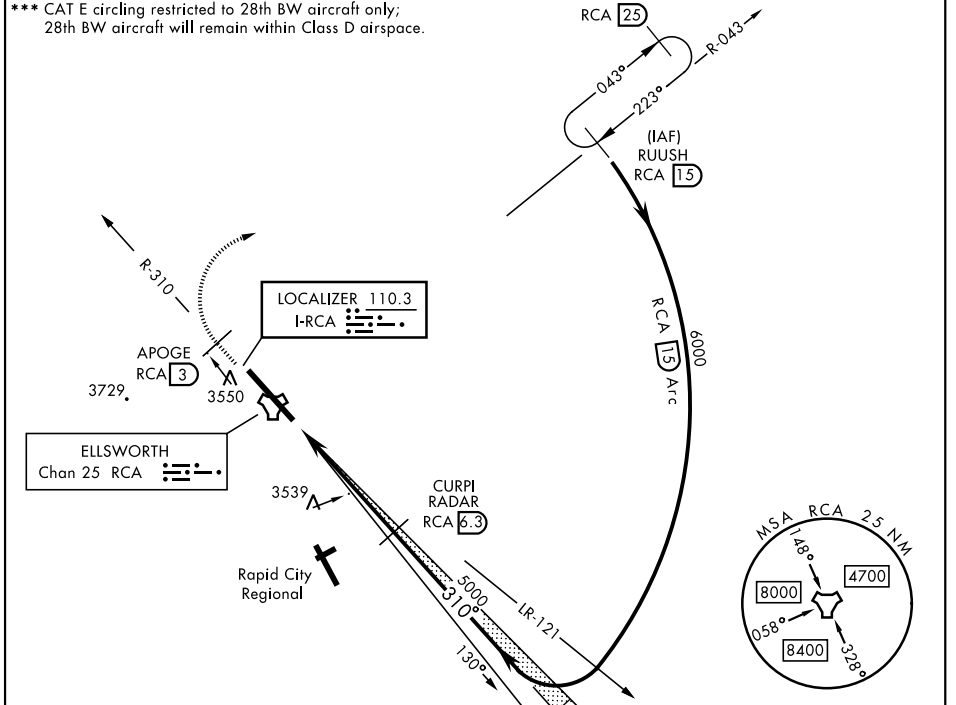
[USAF]

ELLSWORTH AFB (KRCA)

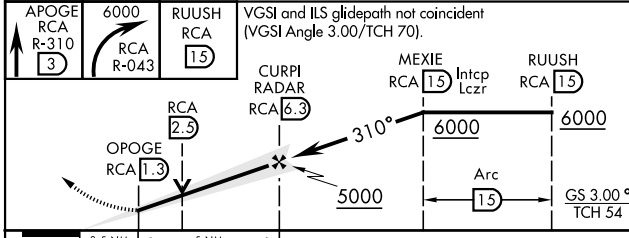
RADAR or DME required.	ALSF-1 	MISSED APPROACH: Track outbound RCA R-310 to 3 DME (APOGE), then turn right to join RCA R-043 outbound to RCA 15 DME (RUUSH) and hold. Maintain 6000.
------------------------	------------	---

ATIS ★ <b>120.625 269.9</b>	APP CON <b>119.5 259.1</b>	TOWER ★ <b>126.05 253.5</b>	GND CON <b>121.8 275.8</b>
--------------------------------	-------------------------------	--------------------------------	-------------------------------

\*\*\* CAT E circling restricted to 28th BW aircraft only; 28th BW aircraft will remain within Class D airspace.

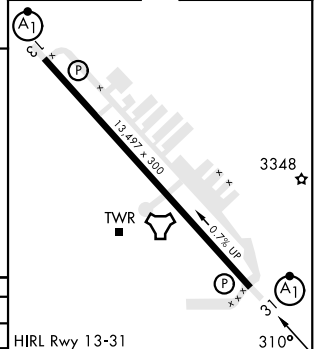


4364  
EMERG SAFE ALT 100 NM 9800



CATEGORY	A	B	C	D	E
S-ILS 31*	3392/24				
S-LOC 31**	3800/24	608 (600-1/2)	3800-1 3/8	608 (600-1 3/8)	
CIRCLING	3860-1	3880-1	3880-1 3/4	3980-2 1/4	4040-2 3/4
	584 (600-1)	604 (700-1)	604 (700-1 3/4)	704 (800-2 1/4)	764 (800-2 3/4)

ELEV	3276	TDZE	3192
------	------	------	------



Knots	FAF to MAP 5 NM				
	60	90	120	150	180
Min:Sec	5:00	3:20	2:30	2:00	1:40

# ILS or LOC Y RWY 31

NC-1, 16 APR 2026 to 14 MAY 2026

NC-1, 16 APR 2026 to 14 MAY 2026