

TACAN Y RWY 13

TACAN RCA Chan 25	APCH CRS 136°	Rwy Idg 13,497 TDZE 3276 Arprt Elev 3276
-----------------------------	-------------------------	---

[USAF]

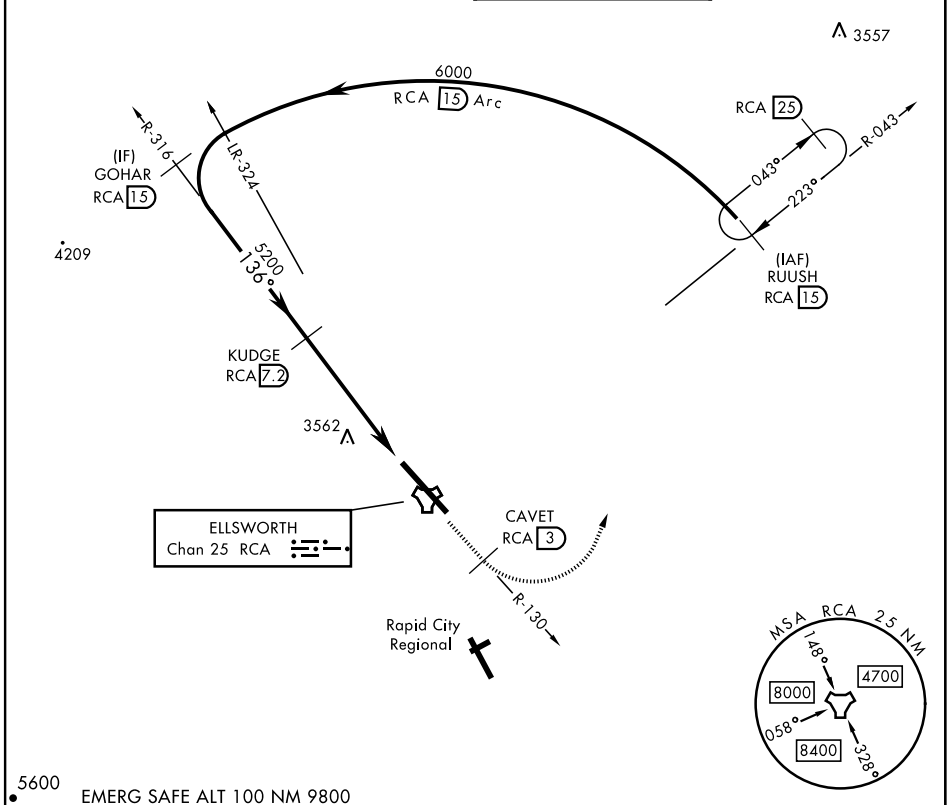
ELLSWORTH AFB (KRCA)

▼ *When ALS inop, increase CAT AB RVR to 55 and vis to 1 mile, CAT CDE vis to 1 $\frac{1}{2}$ miles.
 **CAT E circling restricted to 28th BW aircraft only; 28th BW aircraft will remain within Class D airspace.



MISSED APPROACH: Track outbound RCA R-130 to 3 DME (CAVET), then turn left to join RCA R-043 to RCA 15 DME (RUUSH) and hold. Maintain 6000.

ATIS ★ 120.625 269.9	APP CON 119.5 259.1	TOWER ★ 126.05 253.5	GND CON 121.8 275.8
--------------------------------	-------------------------------	--------------------------------	-------------------------------



EMERG SAFE ALT 100 NM 9800

	RUUSH RCA 15	GOHAR RCA 15	KUDGE RCA 7.2	CAVET RCA R-130 3	6000 RCA R-043	RUUSH RCA 15	ELEV 3276	TDZE 3276
	6000	6000	5200	3.05° TCH 62	5.3 NM	0.5	136°	3348
CATEGORY	A	B	C	D	E			
S-13*	3820/24	544 (600-1/2)	3820/60	544	(600-1 1/2)			
CIRCLING**	3860-1 584 (600-1)	3880-1 604 (700-1)	3880-1 3/4 604 (700-1 3/4)	3980-2 1/4 704 (800-2 1/4)	4040-2 3/4 764 (800-2 3/4)	HIRL Rwy 13-31		

RAPID CITY, SOUTH DAKOTA 44°09'N-103°06'W ELLSWORTH AFB (KRCA)

TACAN Y RWY 13

NC-1, 16 APR 2026 to 14 MAY 2026

NC-1, 16 APR 2026 to 14 MAY 2026