

VORTAC RBL <b>115.7</b> Chan <b>104</b>	APP CRS <b>328°</b>	Rwy Ldg TDZE <b>352</b> Apt Elev <b>352</b>
---	------------------------	---

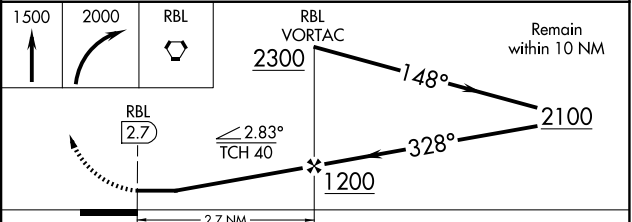
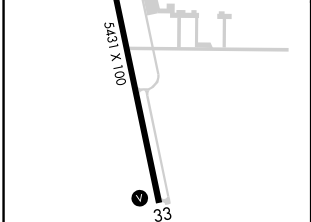
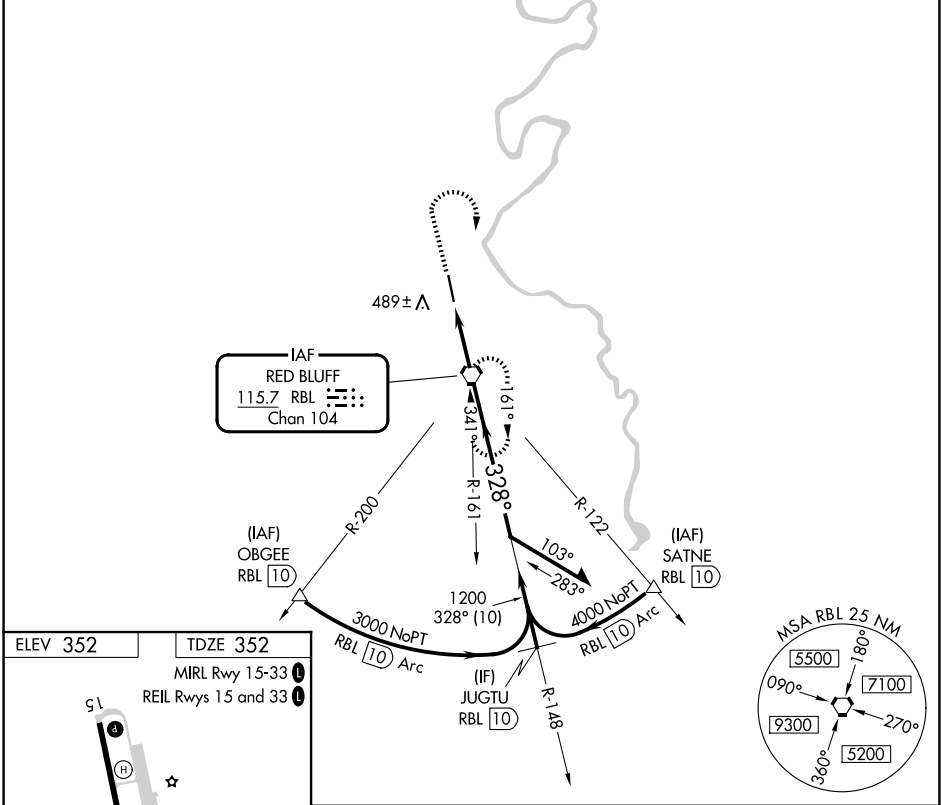
# VOR RWY 33

RED BLUFF MUNI (RBL)

**⚠** When local altimeter setting not received, use Redding altimeter setting and increase all MDAs 80 feet and all Cat C/D visibilities ¼ SM.

MISSED APPROACH: Climb to 1500, then climbing right turn to 2000 direct RBL VORTAC and hold.

ASOS <b>120.775</b>	OAKLAND CENTER <b>132.2 350.3</b>	UNICOM <b>123.0 (CTAF) 0</b>
------------------------	--------------------------------------	---------------------------------



FAF to MAP 2.7 NM					
Knots	60	90	120	150	180
Min:Sec	2:42	1:48	1:21	1:05	0:54
CATEGORY	A	B	C	D	
S-33	740-1 388 (400-1)			740-1¼ 388 (400-1¼)	
CIRCLING	880-1 528 (600-1)		900-1½ 548 (600-1½)		1060-2¼ 708 (800-2¼)

SW-2, 16 APR 2026 to 14 MAY 2026

SW-2, 16 APR 2026 to 14 MAY 2026