

LOC/DME I-RDM 109.1 Chan 28	APP CRS 226°	Rwy Ldg TDZE 7031 3067 Apt Elev 3082
--	------------------------	---

ILS or LOC RWY 23

ROBERTS FLD (RDM)

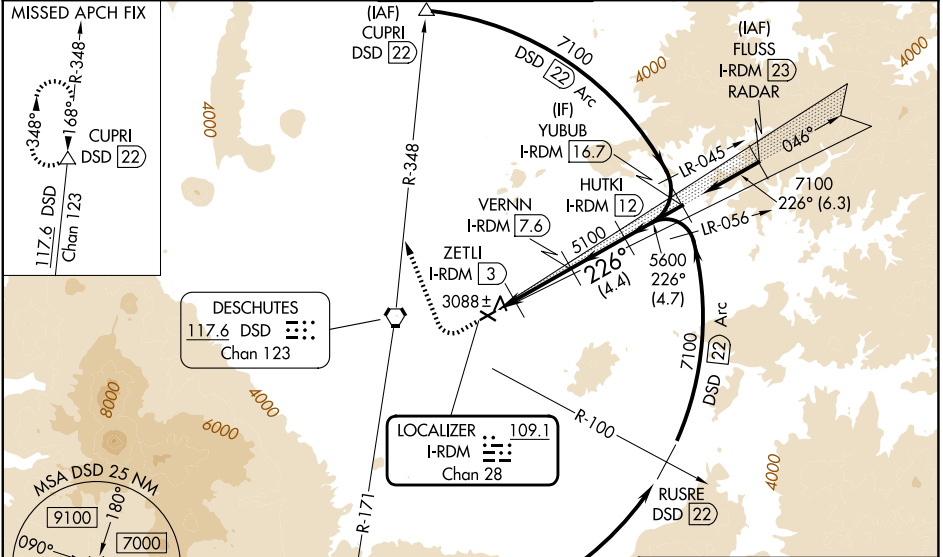
DME required. RADAR required for procedure entry at FLUSS.

⚠ Autopilot coupled approach NA below 4370. VDP NA when using BDN altimeter setting. For inop ALS, increase S-ILS 23* Cat E visibility to 3/8 SM, S-ILS 23 Cat E visibility to 1 SM, and S-LOC 23 Cat C/D/E visibility to 1 SM. For inop ALS when using BDN altimeter setting, increase S-ILS 23* Cats D/E visibility to 7/8 SM, S-ILS 23 Cats A/B/C to 7/8 SM, Cat D to 1 SM, Cat E to 1 1/8 SM; and increase S-LOC 23 Cats C/D/E visibility to 1 3/8 SM. When local altimeter setting not received, use BDN altimeter setting and increase ILS 23* DA to 3348 feet; increase S-ILS 23 DA to 3473 feet and visibility Cat E 1/2 SM. Increase all MDAs 100 feet and S-LOC 23 visibility Cat C/D/E 3/8 SM, and Circling visibility Cat C/D/E 1/2 SM.

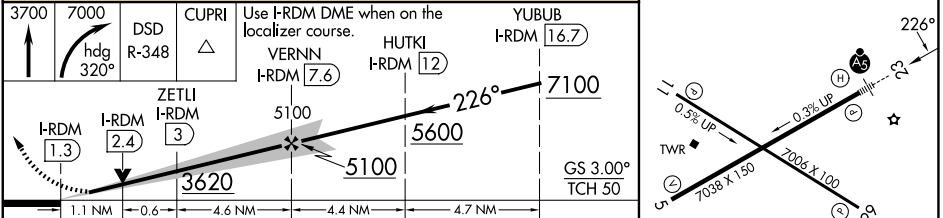
MALSRS **AS**

MISSED APPROACH: Climb to 3700 then climbing right turn to 7000 on heading 320° and on DSD VORTAC R-348 to CUPRI/DSD 22 DME and hold.
*Missed approach requires minimum climb of 223 feet per NM to 4860 for Category D/E aircraft.

ATIS 119.025	SEATTLE CENTER 126.15 269.475	REDMOND TOWER* 124.5 (CTAF) 256.8	GND CON 121.8	UNICOM 122.95
------------------------	---	--	-------------------------	-------------------------



ELEV 3082	D TDZE 3067
-----------	--------------------



CATEGORY	A	B	C	D	E
S-ILS 23*	NA			3267-1/2	200 (200-1/2)
S-ILS 23	3267-1/2 200 (200-1/2)			3321-1/2 254 (300-1/2)	3392-1/2 325 (400-1/2)
S-LOC 23	3440-1/2 373 (400-1/2)		3440-5/8 373 (400-5/8)		
CIRCLING	3540-1 458 (500-1)	3560-1 478 (500-1)	3660-1 1/2 578 (600-1 1/2)	3760-2 1/4 678 (700-2 1/4)	3840-2 3/4 758 (800-2 3/4)

REIL Rwy 5, 11, and 29 **Ⓛ**
HIRL Rwy 5-23 **Ⓛ**
MIRL Rwy 11-29 **Ⓛ**

NW-1, 16 APR 2026 to 14 MAY 2026

NW-1, 16 APR 2026 to 14 MAY 2026