

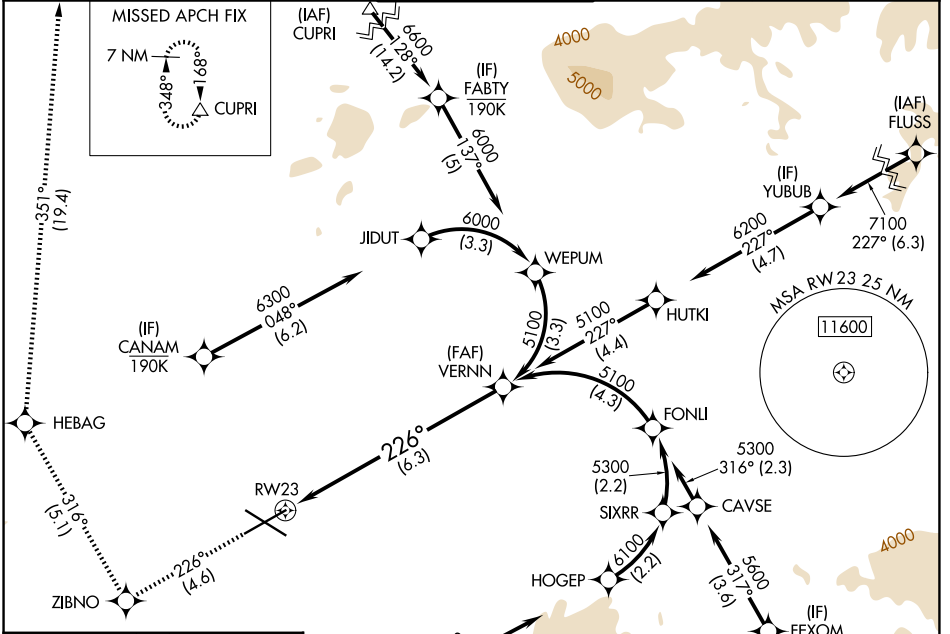
APP CRS	Rwy Ldg	7031
226°	TDZE	3067
	Apt Elev	3082

RNAV (RNP) Z RWY 23

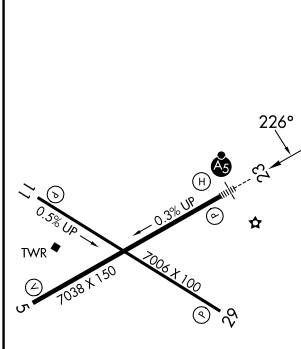
ROBERTS FLD (RDM)

RNP AR APCH - GPS, RF. Authorization required.		MALSR	MISSED APPROACH: Climb to 7000 on track 226° to ZIBNO and on track 316° to HEBAG and on track 351° to CUPRI and hold.
<p>▼ For uncompensated Baro-VNAV systems, procedure NA below -16°C or above 54°C. For inop ALS, increase RNP 0.1 all Cats visibility to ¾ SM, and RNP 0.3 all Cats visibility to 1¾ SM.</p>			

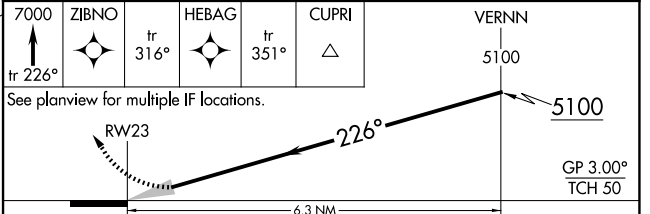
ATIS 119.025	SEATTLE CENTER 126.15 269.475	REDMOND TOWER* 124.5 (CTAF) 0 256.8	GND CON 121.8	UNICOM 122.95
------------------------	---	---	-------------------------	-------------------------



ELEV 3082	D	TDZE 3067
-----------	----------	-----------



(IF) POWEL 210K	ZIBNO	HEBAG	CUPRI	VERNN
	tr 226°	tr 316°	tr 351°	5100



CATEGORY	A	B	C	D
RNP 0.10 DA		3323-½	256 (300-½)	
RNP 0.30 DA		3552-1	485 (500-1)	

AUTHORIZATION REQUIRED

NW-1, 16 APR 2026 to 14 MAY 2026

NW-1, 16 APR 2026 to 14 MAY 2026