

WAAS CH 82514 W23A	APP CRS 226°	Rwy Ldg TDZE Apt Elev	7031 3067 3082
--	------------------------	-----------------------------	---

RNAV (GPS) Y RWY 23

ROBERTS FLD (RDM)

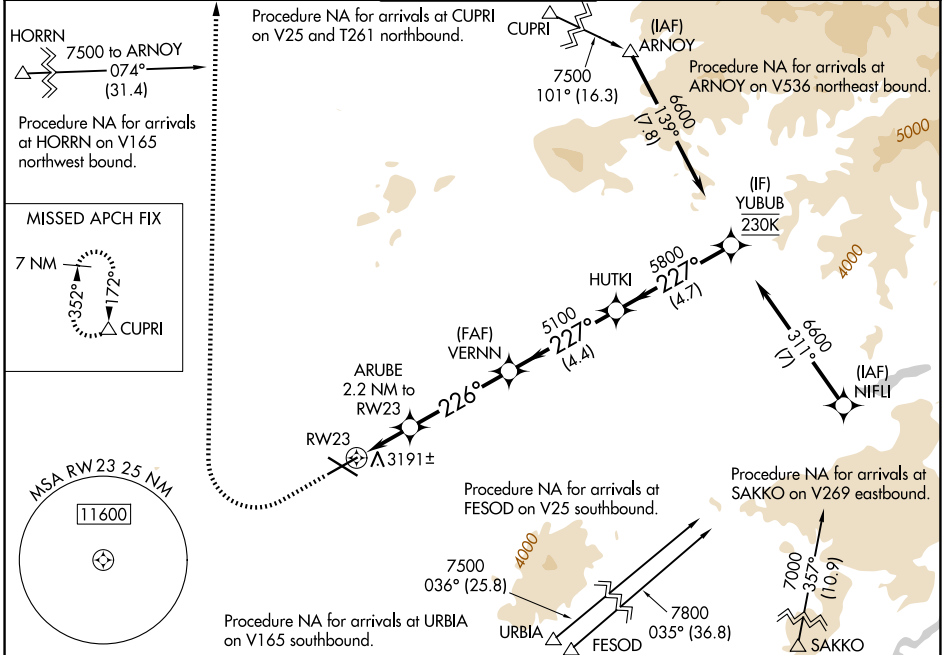
RNP APCH - GPS.

For uncompensated Baro-VNAV systems, LNAV/VNAV NA below -16°C or above 54°C. Baro-VNAV and VDP NA when using BDN altimeter setting. For inop ALS, increase LNAV Cat C/D visibility to 1 $\frac{1}{2}$ SM. When local altimeter setting not received, use BDN altimeter setting and increase LPV DA to 3348 feet; increase LNAV/VNAV DA to 3586 feet and all visibilities $\frac{1}{4}$ SM. Increase all MDAs 100 feet and LNAV visibility Cat C/D $\frac{1}{4}$ SM, and Circling visibility Cat C/D $\frac{1}{4}$ SM.

MALS R

MISSED APPROACH: Climb to 4600 then climbing right turn to 7000 direct CUPRI and hold.

ATIS 119.025	SEATTLE CENTER 126.15 269.475	REDMOND TOWER* 124.5 (CTAF) 0 256.8	GND CON 121.8	UNICOM 122.95
------------------------	---	---	-------------------------	-------------------------



ELEV 3082	D	TDZE 3067	4600	7000	CUPRI	ARUBE	VERNN	HUTKI	YUBUB
			↑	↷	△	2.2 NM to RW23	5100	5800	6600
			1.7 NM	0.5 NM	4.1 NM	4.4 NM	4.7 NM	GP 3.00° TCH 50	
RW23		RW23		RW23		RW23		RW23	
1.7 NM		0.5 NM		4.1 NM		4.4 NM		4.7 NM	
CATEGORY	A		B		C		D		
LPV DA			3267- $\frac{1}{2}$		200 (200- $\frac{1}{2}$)				
LNAV/VNAV DA			3505- $\frac{3}{4}$		438 (500- $\frac{3}{4}$)				
LNAV MDA	3640- $\frac{1}{2}$		573 (600- $\frac{1}{2}$)		3640-1 $\frac{1}{4}$		573 (600-1 $\frac{1}{4}$)		
CIRCLING	3640-1		558 (600-1)		3640-1 $\frac{5}{8}$		3760-2 $\frac{1}{4}$		558 (600-1 $\frac{5}{8}$) 678 (700-2 $\frac{1}{4}$)

NW-1, 16 APR 2026 to 14 MAY 2026

NW-1, 16 APR 2026 to 14 MAY 2026