

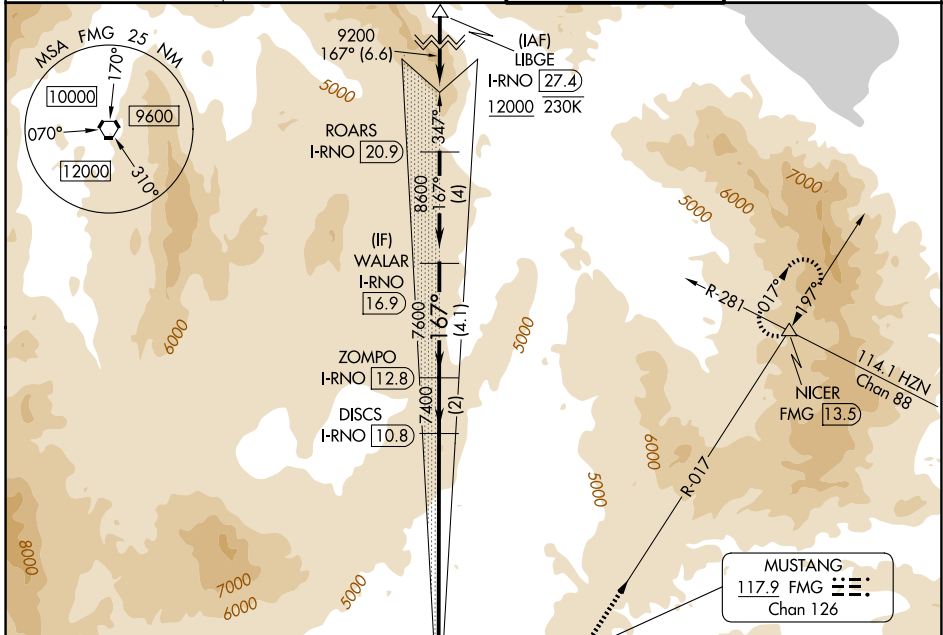
LOC/DME I-RNO <b>110.9</b> Chan <b>46</b>	APP CRS <b>167°</b>	Rwy Ldg TDZE <b>10001</b> <b>4415</b>	Apt Elev <b>4415</b>
---	------------------------	---	-------------------------

# ILS Y RWY 17R

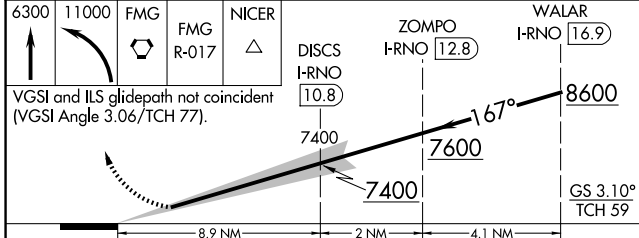
RENO/TAHOE INTL (RNO)

DME required.	MALS R	MISSED APPROACH: Climb to 6300 then climbing left turn to 11000 direct FMG VORTAC and on FMG VORTAC R-017 to NICER INT/FMG 13.5 DME and hold, continue climb-in-hold to 11000. * Missed approach requires minimum climb of 350 feet per NM to 8000. ** Missed approach requires minimum climb of 275 feet per NM to 8000.
# Inop table does not apply. † For inop ALS, increase S-ILS -13°C 17R visibility to 1 1/2 SM.		

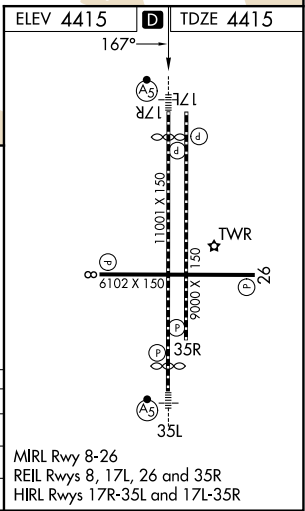
D-ATIS <b>135.8 363.0</b>	NORCAL APP CON <b>119.2 279.55 126.3 353.9</b>	RENO TOWER <b>118.7 257.8</b>	GND CON <b>121.9 348.6</b>
------------------------------	---	----------------------------------	-------------------------------



ELEV 4415	TDZE 4415
167°	



CATEGORY	A	B	C	D	E
S-ILS 17R *†		4915/50	500 (500-1)		
S-ILS 17R **‡		5415-4	1000 (1000-4)		
S-ILS 17R #		5915-5	1500 (1500-5)		



SW-4, 16 APR 2026 to 14 MAY 2026

SW-4, 16 APR 2026 to 14 MAY 2026