

(PVINE5.PVINE) 23166

PVINE FIVE DEPARTURE (RNAV)

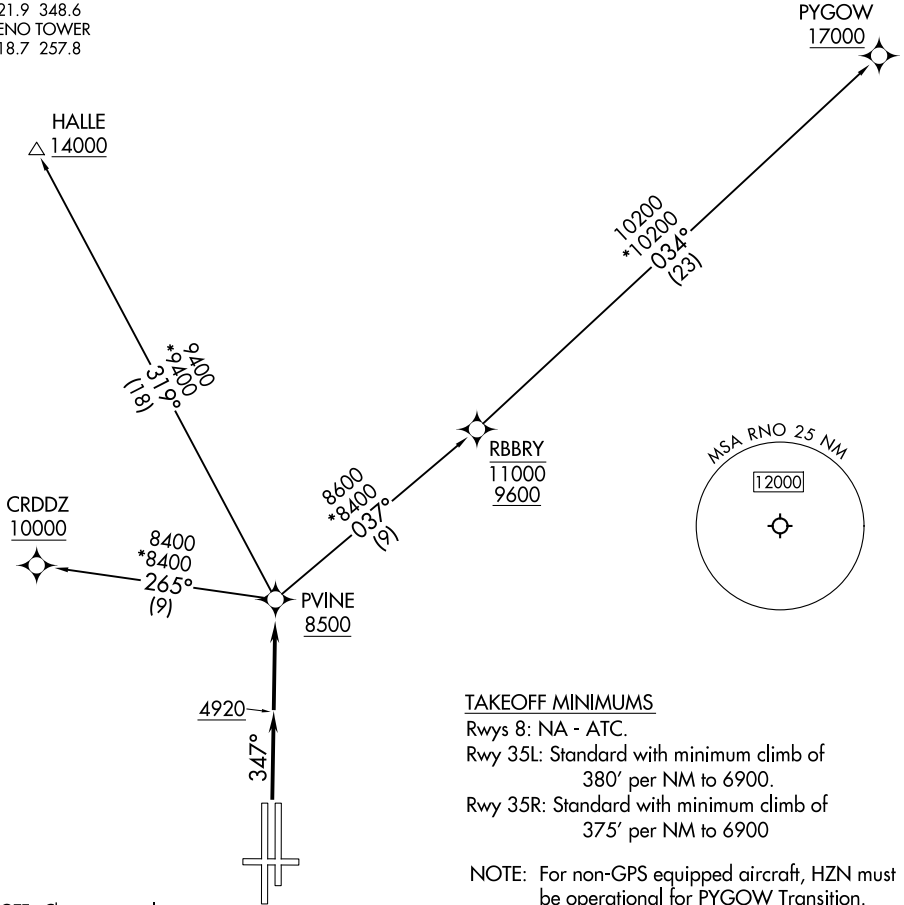
AL-346 (FAA)

RENO/TAHOE INTL (RNO)
RENO, NEVADA

NORCAL DEP CON
126.3 353.9
D-ATIS
135.8 363.0
CLNC DEL
124.9 370.85
GND CON
121.9 348.6
RENO TOWER
118.7 257.8

RNAV 1 - DME/DME/IRU or GPS.
RADAR required for non-GPS equipped aircraft.

**TOP ALTITUDE:
FL190**



TAKEOFF MINIMUMS

Rwys 8: NA - ATC.

Rwy 35L: Standard with minimum climb of 380' per NM to 6900.

Rwy 35R: Standard with minimum climb of 375' per NM to 6900

NOTE: For non-GPS equipped aircraft, HZN must be operational for PYGOW Transition.

NOTE: Chart not to scale.



DEPARTURE ROUTE DESCRIPTION

TAKEOFF RUNWAYS 35L/R: Climb on heading 347° to 4920, then direct PVINE, thence. . . .

. . . .Maintain FL190 or assigned altitude. Expect filed altitude 5 minutes after departure.

CRDDZ TRANSITION (PVINE5.CRDDZ)

HALLE TRANSITION (PVINE5.HALLE)

PYGOW TRANSITION (PVINE5.PYGOW)

PVINE FIVE DEPARTURE (RNAV)

(PVINE5.PVINE) 15JUN23

RENO, NEVADA
RENO/TAHOE INTL (RNO)

SW-4, 16 APR 2026 to 14 MAY 2026

SW-4, 16 APR 2026 to 14 MAY 2026