

APP CRS 347°	Rwy Ldg TDZE Apt Elev	10011 4410 4415
------------------------	-----------------------------	--

RNAV (RNP) W RWY 35L

RENO/TAHOE INTL (RNO)

RNP AR APCH - GPS.

⚠ For uncompensated Baro-VNAV systems, procedure NA below -9°C or above 35°C.

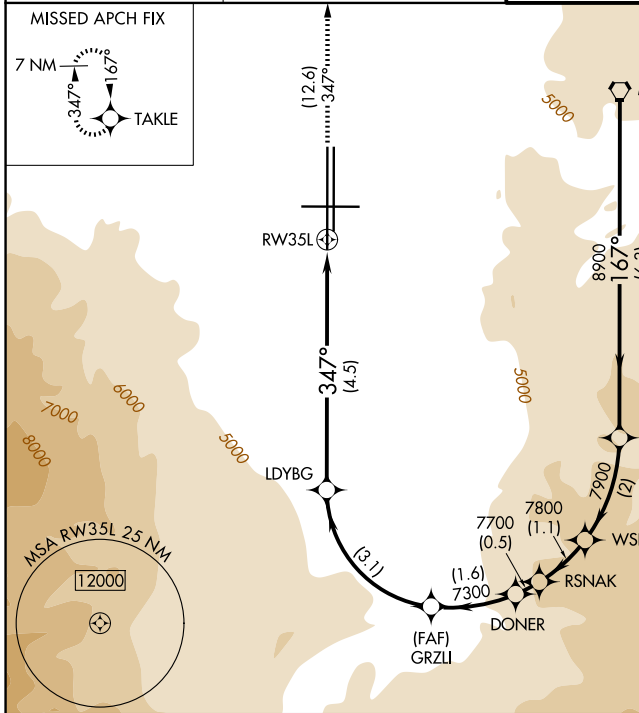
❄ -13°C

MALS/R



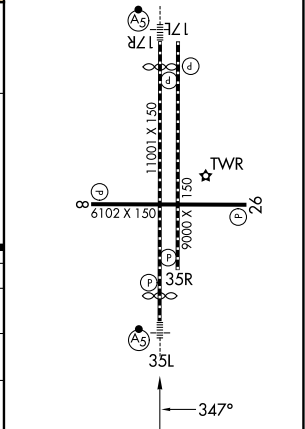
MISSED APPROACH: Climb to 11000 on track 347° to TAKLE and hold, continue climb-in-hold to 11000. *Missed approach requires minimum climb of 300 feet per NM to 7140.

D-ATIS 135.8 363.0	NORCAL APP CON 119.2 279.55 126.3 353.9	RENO TOWER 118.7 257.8	GND CON 121.9 348.6
------------------------------	---	----------------------------------	-------------------------------



ELEV 4415	D TDZE 4410
HIRL Rwys 17R-35L and 17L-35R	
REIL Rwys 8, 17L, 26, and 35R	
MIRL Rwy 8-26	

FMG VORTAC	VCITY	WSHOE	RSNAK	DONER	GRZLI	LDYBG	RW35L
10000	8900	7900	7800	7700	7300	6155	
GP 3.50° TCH 72							
	6.3 NM	2 NM	1.1 NM	0.5 NM	1.6 NM	3.1 NM	4.5 NM
CATEGORY	A	B	C	D			
RNP 0.10 DA*	4736-1/2		326 (400-1/2)				
RNP 0.30 DA	5349-2		939 (1000-2)				
AUTHORIZATION REQUIRED							



SW-4, 16 APR 2026 to 14 MAY 2026

SW-4, 16 APR 2026 to 14 MAY 2026