

APP CRS 347°	Rwy Ldg TDZE 4408	9000
	Apt Elev 4415	

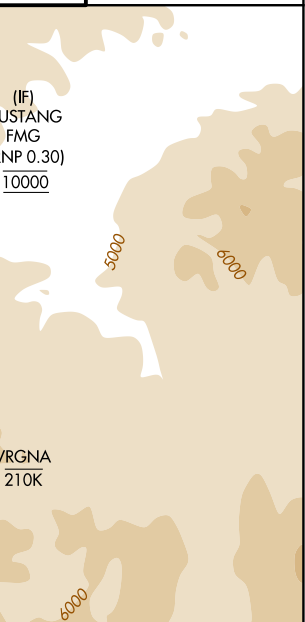
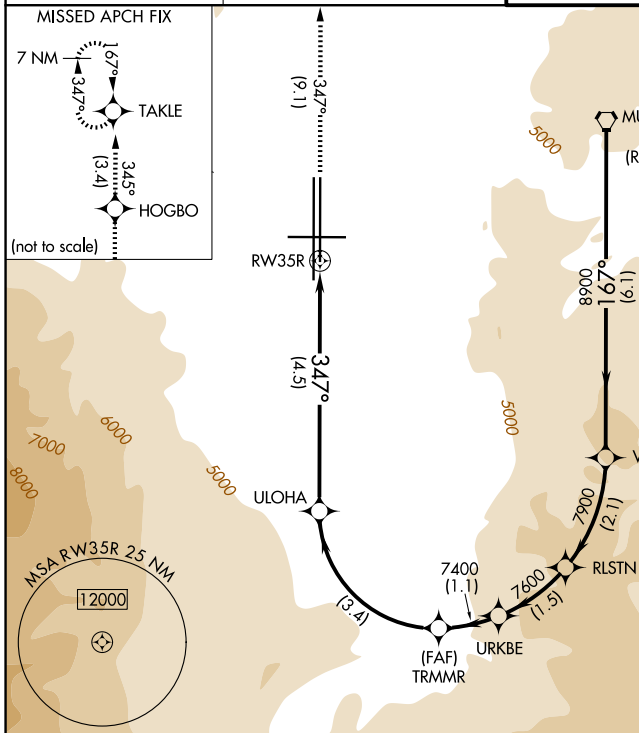
RNAV (RNP) W RWY 35R

RENO/TAHOE INTL (RNO)

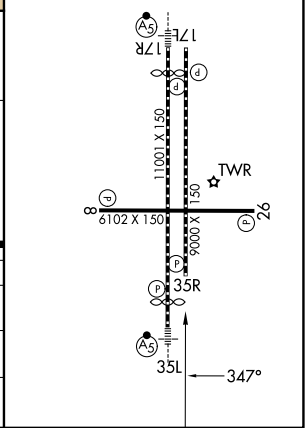
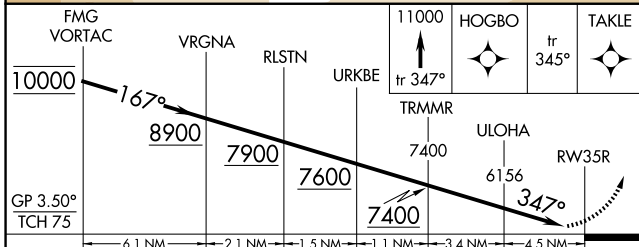
RNP AR APCH - GPS.
For uncompensated Baro-VNAV systems, procedure NA below -9°C or above 34°C.
-13°C

MISSED APPROACH: Climb to 11000 on track 347° to HOGBO and on track 345° to TAKLE and hold, continue climb-in-hold to 11000.
 *Missed approach requires minimum climb of 301 feet per NM to 7150.

D-ATIS 135.8 363.0	NORCAL APP CON 119.2 279.55 126.3 353.9	RENO TOWER 118.7 257.8	GND CON 121.9 348.6
------------------------------	---	----------------------------------	-------------------------------



ELEV 4415	D TDZE 4408
HIRL Rwys 17R-35L and 17L-35R	
REIL Rwys 8, 17L, 26, and 35R	
MIRL Rwy 8-26	



CATEGORY	A	B	C	D
RNP 0.11 DA*	4762-1 354 (400-1)			
RNP 0.30 DA	5349-2½ 941 (1000-2½)			
AUTHORIZATION REQUIRED				

SW-4, 16 APR 2026 to 14 MAY 2026

SW-4, 16 APR 2026 to 14 MAY 2026