

RNAV (RNP) Z RWY 17R

RENO/TAHOE INTL (RNO)

APP CRS 167°	Rwy Ldg TDZE 4415	10001
	Apt Elev 4415	

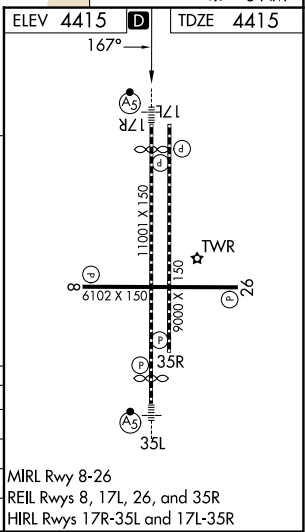
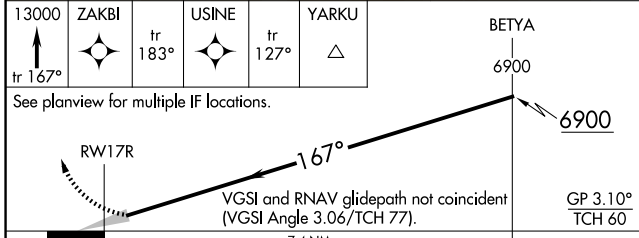
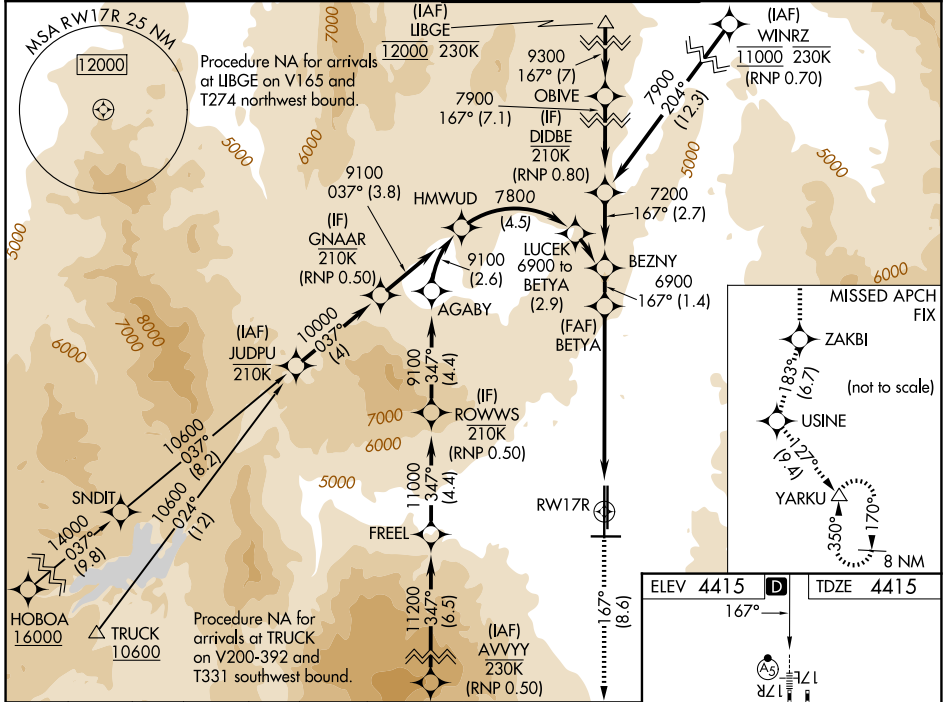
RNP AR APCH - GPS. Authorization required. AGABY, HMWUD, LUCEK: RF. From AVVVY: min RNP 0.50, from WINRZ: min RNP 0.70, from ROWWS: min RNP 0.50, from DIDBE: min RNP 0.80, from GNAAR min RNP 0.50.



MISSED APPROACH: Climb to 13000 on track 167° to ZAKBI and on track 183° to USINE and on track 127° to YARKU and hold, continue climb-in-hold to 13000. *Misted approach requires minimum climb of 267 feet per NM to 7200. # Misted approach requires minimum climb of 259 feet per NM to 7200.

▼ For uncompensated Baro-VNAV systems, procedure NA below -10°C or above 54°C. For inop ALS, increase RNP 0.30 DA visibility all Cats to 1½ SM.

D-ATIS 135.8 363.0	NORCL APP CON 119.2 279.55 126.3 353.9	RENO TOWER 118.7 257.8	GND CON 121.9 348.6
------------------------------	--	----------------------------------	-------------------------------



13000	ZAKBI	USINE	YARKU	BETYA
tr 167°	tr 183°	tr 127°		6900

See planview for multiple IF locations.

RW17R

167°

6900

GP 3.10° TCH 60

VGSI and RNAV glidepath not coincident (VGSI Angle 3.06/TCH 77).

7.4 NM

CATEGORY	A	B	C	D
RNP 0.10 DA *		4755/26	340 (400-½)	
RNP 0.17 DA #		4805/35	390 (400-¾)	
RNP 0.30 DA		5095-1½	680 (700-1½)	

AUTHORIZATION REQUIRED

MIRL Rwy 8-26
REIL Rwys 8, 17L, 26, and 35R
HIRL Rwys 17R-35L and 17L-35R

SW-4, 16 APR 2026 to 14 MAY 2026

SW-4, 16 APR 2026 to 14 MAY 2026