

APP CRS 347°	Rwy Ldg TDZE Apt Elev	10011 4410 4415
------------------------	-----------------------------	--

RNAV (RNP) Z RWY 35L

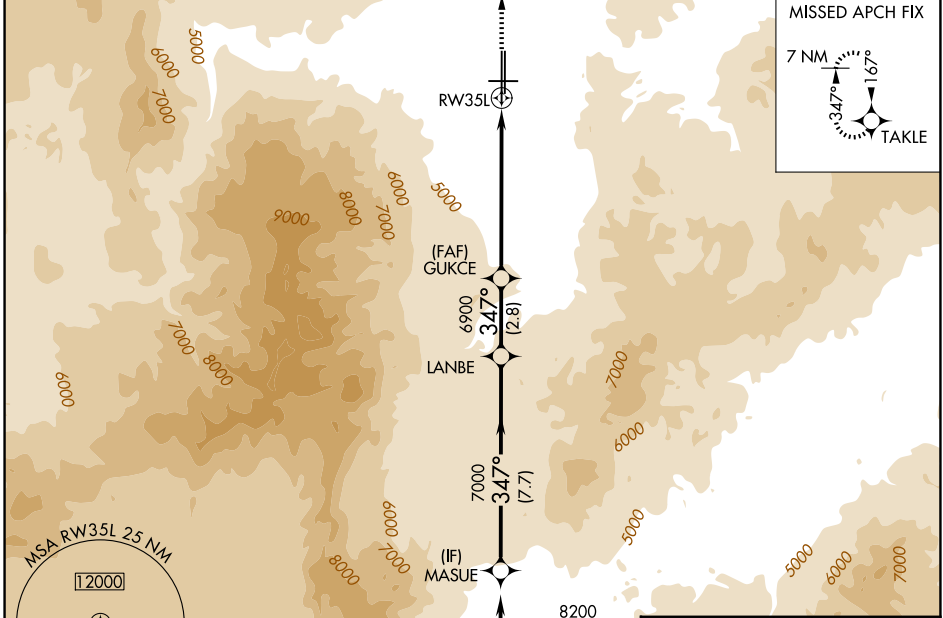
RENO/TAHOE INTL (RNO)

RNP AR APCH - GPS, min RNP 0.30.
Authorization required.

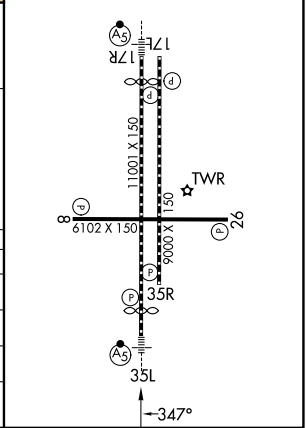
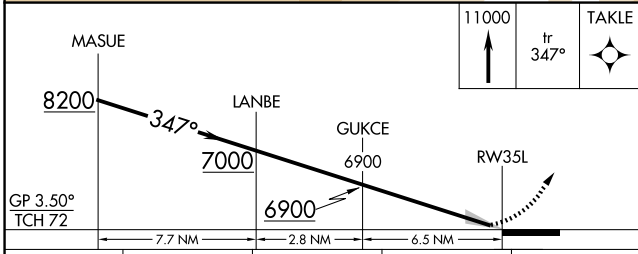
A For uncompensated Baro-VNAV systems, procedure NA below -13°C or above 35°C.

MALSR MISSED APPROACH: Climb to 11000 on track 347° to TAKLE and hold, continue climb-in-hold to 11000. # Missed approach requires minimum climb of 216 feet per NM to 7200. *Missed approach requires minimum climb of 301 feet per NM to 7200.

D-ATIS 135.8 363.0	NORCL APP CON 119.2 279.55 126.3 353.9	RENO TOWER 118.7 257.8	GND CON 121.9 348.6
------------------------------	--	---	-------------------------------



ELEV 4415	D TDZE 4410
REIL Rwy 8, 17L, 26, and 35R	
HIRL Rwy 17R-35L and 17L-35R	
MIRL Rwy 8/26	



CATEGORY	A	B	C	D
RNP 0.10 DA *		4753-5/8	343 (400-5/8)	
RNP 0.20 DA #		5193-13/4	783 (800-13/4)	
RNP 0.30 DA		5353-2	943 (1000-2)	

AUTHORIZATION REQUIRED

SW-4, 16 APR 2026 to 14 MAY 2026

SW-4, 16 APR 2026 to 14 MAY 2026