

APP CRS 347°	Rwy Ldg TDZE Apt Elev	9000 4408 4415
------------------------	-----------------------------	-------------------------------------------

RNAV (RNP) Z RWY 35R

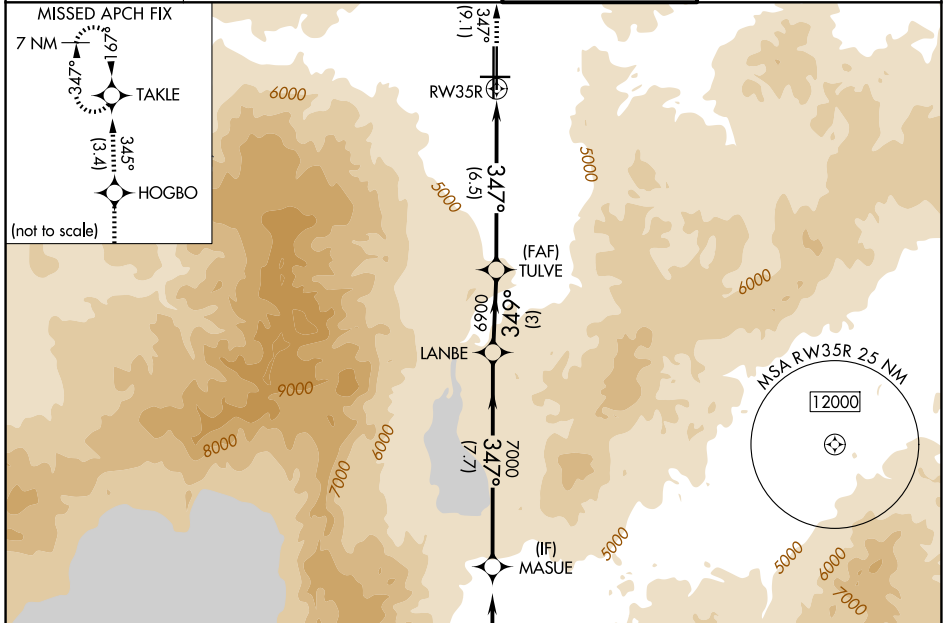
RENO/TAHOE INTL (RNO)

RNP AR APCH-GPS, min RNP 0.30. Authorization required.

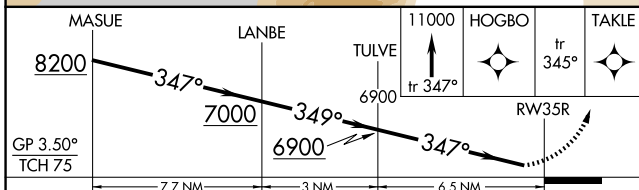
MISSED APPROACH: Climb to 11000 on track 347° to HOGBO and on track 345° to TAKLE and hold, continue climb-in-hold to 11000.
 *Missed approach requires minimum climb of 306 feet per NM to 7200.

For uncompensated Baro-VNAV systems, procedure NA below -10°C or above 34°C.
 -13°C

D-ATIS 135.8 363.0	NORCAL APP CON 119.2 279.55 126.3 353.9	RENO TOWER 118.7 257.8	GND CON 121.9 348.6
------------------------------	---------------------------------------------------	----------------------------------	-------------------------------

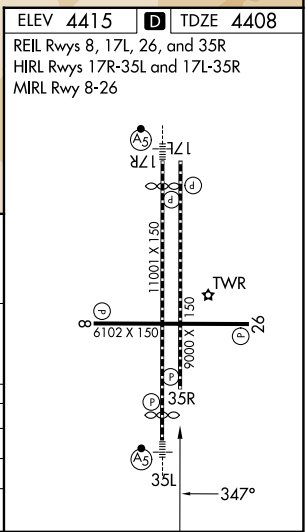


ELEV 4415	D TDZE 4408
REIL Rwy 8, 17L, 26, and 35R	
HIRL Rwy 17R-35L and 17L-35R	
MIRL Rwy 8-26	



CATEGORY	A	B	C	D
RNP 0.11 DA*	4763-1		355 (400-1)	
RNP 0.30 DA	5353-2½		945 (1000-2½)	

AUTHORIZATION REQUIRED



SW-4, 16 APR 2026 to 14 MAY 2026

SW-4, 16 APR 2026 to 14 MAY 2026