

WAAS CH 72909 W17A	APP CRS 167°	Rwy Ldg TDZE Apt Elev	9000 4415 4415
----------------------------------------	------------------------	-----------------------------	-------------------------------------------

RNAV (GPS) X RWY 17L

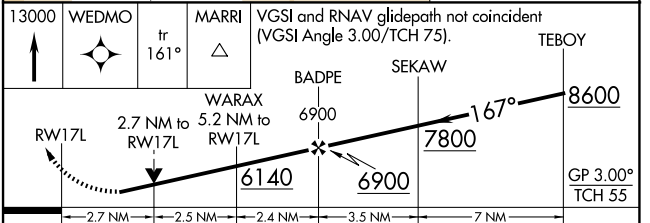
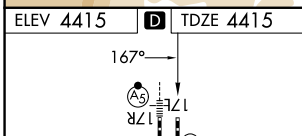
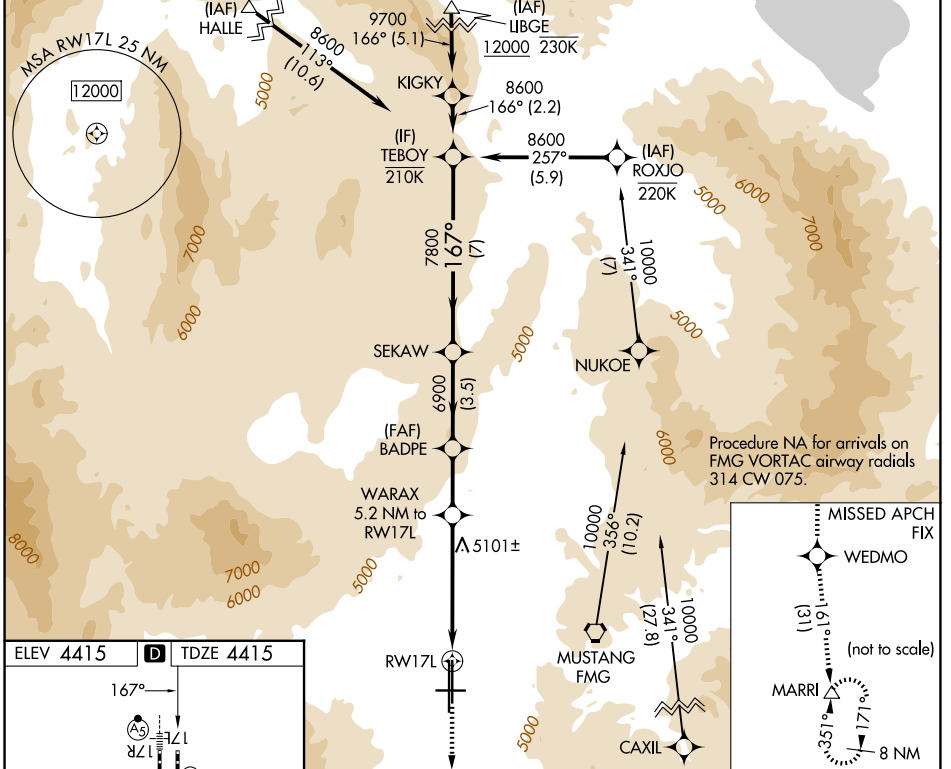
RENO/TAHOE INTL (RNO)

RNP APCH - GPS.

⚠ Circling Rwy 8 NA at night. Rwy 17L helicopter visibility reduction below ¼ SM NA. For uncompensated Baro-VNAV systems, LNAV/VNAV NA below -13°C or above 54°C.

MISSED APPROACH: Climb to 13000 direct WEDMO and on track 161° to MARRI and hold.

D-ATIS 135.8 363.0	NORCAL APP CON 119.2 279.55 126.3 353.9	RENO TOWER 118.7 257.8	GND CON 121.9 348.6
------------------------------	---------------------------------------------------	----------------------------------	-------------------------------



13000	WEDMO	MARRI	VGSI and RNAV glidepath not coincident (VGSI Angle 3.00/TCH 75).		TEBOY
↑	✧	tr 161°	△		
RWY 17L		WARAX 2.7 NM to RWY 17L	BADPE 6900	SEKAW 7800	8600
		WARAX 5.2 NM to RWY 17L	6140	6900	GP 3.00° TCH 55
			2.7 NM	2.5 NM	2.4 NM
			3.5 NM	7 NM	
CATEGORY	A	B	C	D	
LPV DA	5109-2				694 (700-2)
LNAV/VNAV DA	5094-1 7/8				679 (700-1 7/8)
LNAV MDA	5360-1 1/4	945 (1000-1 1/4)	5360-2 1/2	945 (1000-2 1/2)	
CIRCLING	5360-1 1/4	945 (1000-1 1/4)	5360-1 1/2	945 (1000-1 1/2)	6460-3 2045 (2100-3)

MIRL Rwy 8-26
REIL Rws 8, 17L, 26, and 35R
HIRL Rws 17R-35L and 17L-35R

SW-4, 16 APR 2026 to 14 MAY 2026

SW-4, 16 APR 2026 to 14 MAY 2026