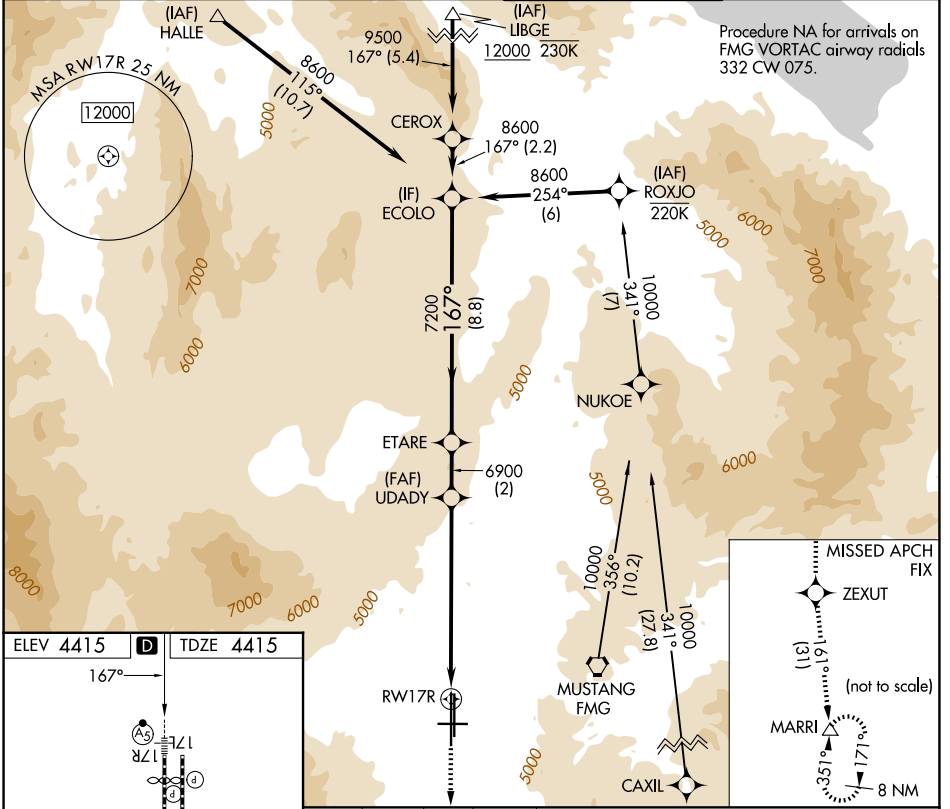


WAAS CH 78309 W17B	APP CRS 167°	Rwy Ldg TDZE Apt Elev	10001 4415 4415
--	------------------------	-----------------------------	--

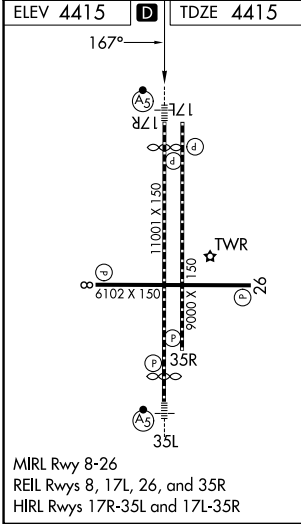
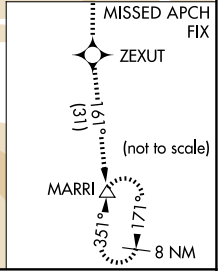
RNAV (GPS) X RWY 17R

RENO/TAHOE INTL (RNO)

RNP APCH - GPS.		MALSR	MISSED APPROACH: Climb to 13000 direct ZEXUT and on track 161° to MARRI and hold.	
<p>▼ For inop ALS, increase LPV all Cats visibility to 2 1/2 SM. Inop table does not apply to LNAV all Cats.</p> <p>⚠ -13°C</p>				
D-ATIS 135.8 363.0	NORCAL APP CON 119.2 279.55 126.3 353.9	RENO TOWER 118.7 257.8	GND CON 121.9 348.6	



Procedure NA for arrivals on FMG VORTAC airway radials 332 CW 075.



13000	ZEXUT	MARRI	VGSI and RNAV glidepath not coincident (VGSI Angle 3.06/TCH 77).	
↑	✧	△	UDADY	ETARE
	tr 161°		6900	8600
			5.2 NM to RWY 17R	7200
			6900	8600
			5.2 NM	2.1 NM
			2 NM	8.8 NM
				GP 3.16° TCH 59
CATEGORY	A	B	C	D
LPV DA	5239-1 7/8 824 (900-1 7/8)			
LNAV MDA	6200/40 1785 (1800-3/4)	6200/55 1785 (1800-1)	6200-3	1785 (1800-3)

SW-4, 16 APR 2026 to 14 MAY 2026

SW-4, 16 APR 2026 to 14 MAY 2026