

RNAV (GPS) X RWY 35R

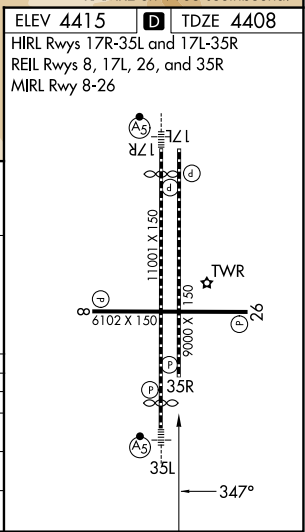
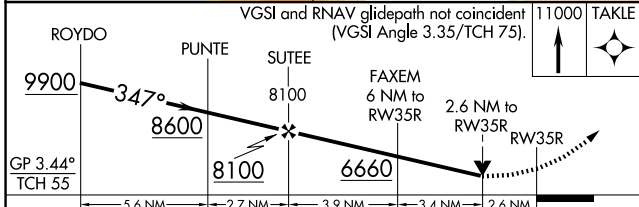
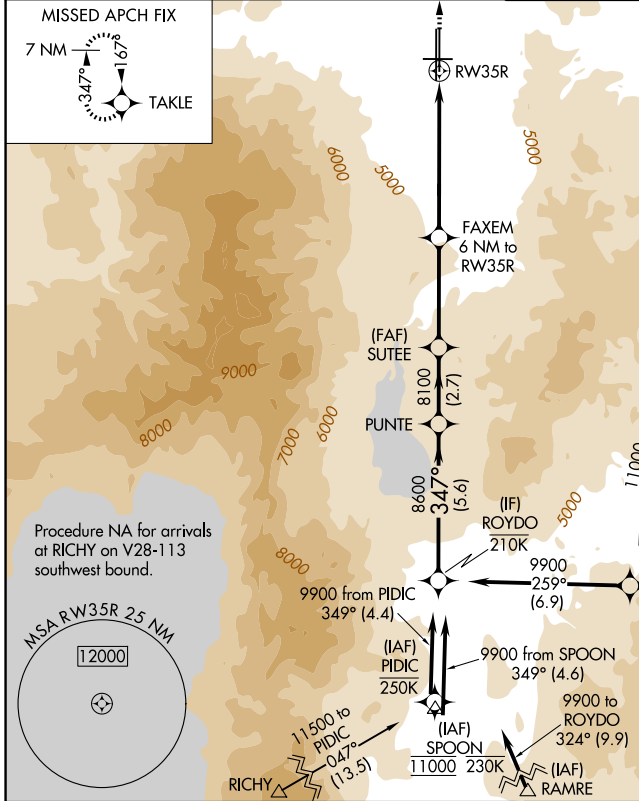
RENO/TAHOE INTL (RNO)

APP CRS 347°	Rwy Ldg TDZE Apt Elev	9000 4408 4415
------------------------	-----------------------------	---

RNP APCH - GPS.
 Baro-VNAV NA. Rwy 35R helicopter visibility reduction below ¾ SM NA. Circling Rwy 8 NA at night.
 D-ATIS **135.8 363.0**

MISSED APPROACH: Climb to 11000 direct TAKLE and hold, continue climb-in-hold to 11000.
 *Missed approach requires minimum climb of 250 feet per NM to 5600.

NORCAL APP CON 119.2 279.55 126.3 353.9	RENO TOWER 118.7 257.8	GND CON 121.9 348.6
---	----------------------------------	-------------------------------



CATEGORY	A	B	C	D
LNVA/VNAV DA	5474-4 1066 (1100-4)			
LNVA MDA*	5400-1¼ 992 (1000-1¼)	5400-1½ 992 (1000-1½)	5400-3	992 (1000-3)
LNVA MDA	5540-1¼ 1132 (1200-1¼)	5540-1½ 1132 (1200-1½)	5540-3	1132 (1200-3)
CIRCLING	5540-1¼ 1125 (1200-1¼)	5540-1½ 1125 (1200-1½)	6460-3	2045 (2100-3)

SW-4, 16 APR 2026 to 14 MAY 2026

SW-4, 16 APR 2026 to 14 MAY 2026