
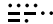

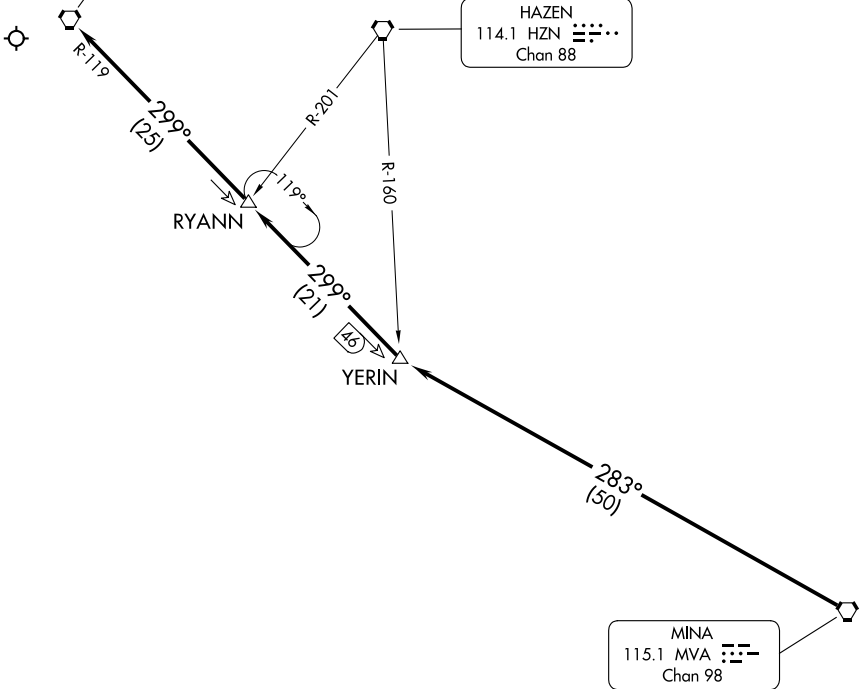


NORCAL APP CON  
 119.2 279.55  
 D-ATIS  
 135.8 363.0  
 RENO TOWER  
 118.7 257.8

MUSTANG  
 117.9 FMG   
 Chan 126

HAZEN  
 114.1 HZN   
 Chan 88

MINA  
 115.1 MVA   
 Chan 98



SW-4, 16 APR 2026 to 14 MAY 2026

SW-4, 16 APR 2026 to 14 MAY 2026

CAUTION: Intense glider activity to FL180.

NOTE: Runways 17L/R only.

NOTE: RADAR required.

NOTE: Chart not to scale.

### ARRIVAL ROUTE DESCRIPTION

RUNWAYS 17L/R: From over MVA VORTAC on MVA R-283 to YERIN, thence on FMG R-119 to FMG VORTAC. Expect RADAR vectors to Runways 17L/R.