

COLIN EIGHT DEPARTURE

ATIS 119.15 263.025
CLNC DEL
127.55 348.6
GND CON
121.9 348.6
RICHMOND TOWER
121.1 257.8
POTOMAC DEP CON
126.4 282.375

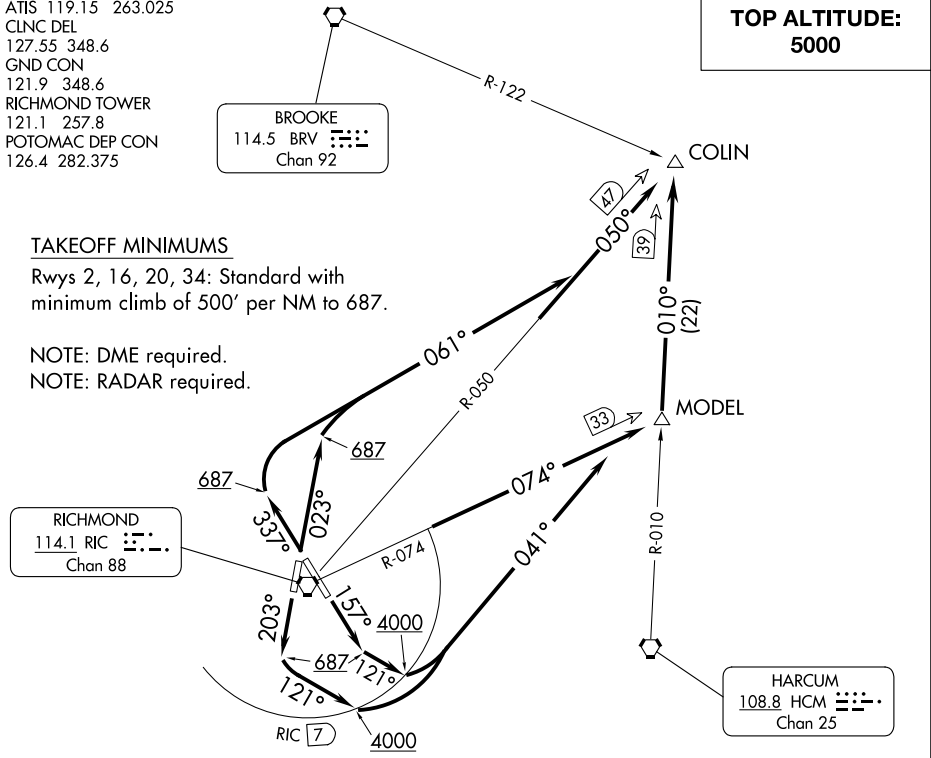
BROOKE
114.5 BRV
Chan 92

**TOP ALTITUDE:
5000**

TAKEOFF MINIMUMS

Rwys 2, 16, 20, 34: Standard with minimum climb of 500' per NM to 687.

NOTE: DME required.
NOTE: RADAR required.



NE-3, 16 APR 2026 to 14 MAY 2026

NE-3, 16 APR 2026 to 14 MAY 2026



DEPARTURE ROUTE DESCRIPTION

TAKEOFF RUNWAY 2: Climb heading 023° to 687, then climbing right turn heading 061° to intercept RIC VORTAC R-050 to COLIN INT/RIC 47 DME, thence

TAKEOFF RUNWAY 16: Climb heading 157° to 687, then climbing left turn heading 121° to cross RIC VORTAC 7 DME at or above 4000, then climbing left turn heading 041° to intercept RIC VORTAC R-074 to MODEL INT/RIC 33 DME, then on HCM VORTAC R-010 to COLIN INT/HCM 39 DME, thence

TAKEOFF RUNWAY 20: Climb heading 203° to 687, then climbing left turn heading 121° to cross RIC VORTAC 7 DME at or above 4000, then climbing left turn heading 041° to intercept RIC VORTAC R-074 to MODEL INT/RIC 33 DME, then on HCM VORTAC R-010 to COLIN INT/HCM 39 DME, thence

TAKEOFF RUNWAY 34: Climb heading 337° to 687, then climbing right turn heading 061° to intercept RIC VORTAC R-050 to COLIN INT/RIC 47 DME, thence

. . . . maintain 5000 or assigned altitude. Expect filed altitude within ten minutes after departure.

COLIN EIGHT DEPARTURE