

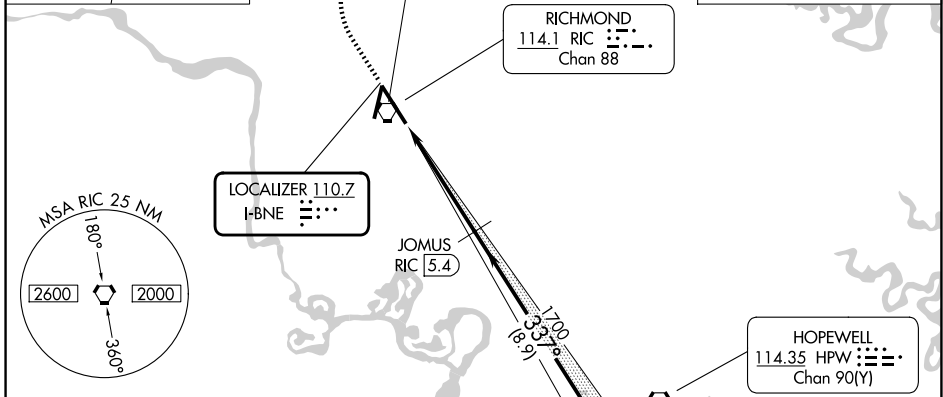
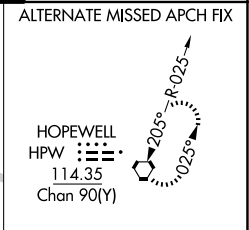
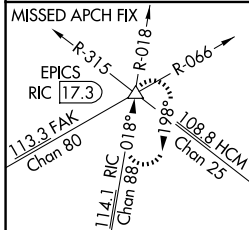
LOC I-BNE 110.7	APP CRS 337°	Rwy Ldg TDZE Apt Elev	9003 161 168
---------------------------	------------------------	-----------------------------	---

ILS or LOC RWY 34

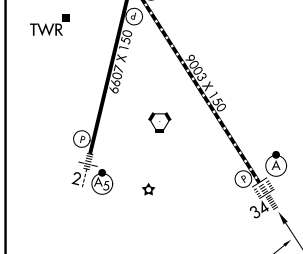
RICHMOND INTL (RIC)

DME required for LOC only.	ALSIF-2 	MISSED APPROACH: Climb to 800 then climbing right turn to 2000 on RIC VORTAC R-018 to EPICS INT/RIC 17.3 DME and hold.
----------------------------	-------------	--

ATIS 119.15 263.025	POTOMAC APP CON 126.4 282.375 (001°-185°) 126.75 307.2 (186°-360°)	RICHMOND TOWER 121.1 257.8	GND CON 121.9 348.6
-------------------------------	--	--------------------------------------	-------------------------------



ELEV 168	D	TDZE 161
-----------------	----------	-----------------



800	2000	EPICS	JOMUS RIC 5.4	JUVPO RIC 14.3
↑	RIC R-018	△	1700	1700
			337°	1700
			1700	
VGS1 and ILS glidepath not coincident (VGS1 Angle 3.00/TCH 79).			GS 3.00° TCH 54	
1.2 NM		3.5 NM		8.9 NM

TDZ/CL Rwy 34 HIRL Rwy 2-20 and 16-34 REIL Rwy 20	FAF to MAP 4.7 NM					
Knots	60	90	120	150	180	
Min:Sec	4:42	3:08	2:21	1:53	1:34	
CATEGORY	A	B	C	D	E	
S-ILS 34	361/18		200 (200-½)			
S-LOC 34	620/24	459 (500-½)	620/45		459 (500-¾)	
CIRCLING	660-1	492 (500-1)	700-1½ 532 (600-1½)	720-2 552 (600-2)	740-2 572 (600-2)	

NE-3, 16 APR 2026 to 14 MAY 2026

NE-3, 16 APR 2026 to 14 MAY 2026