

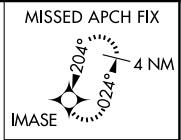
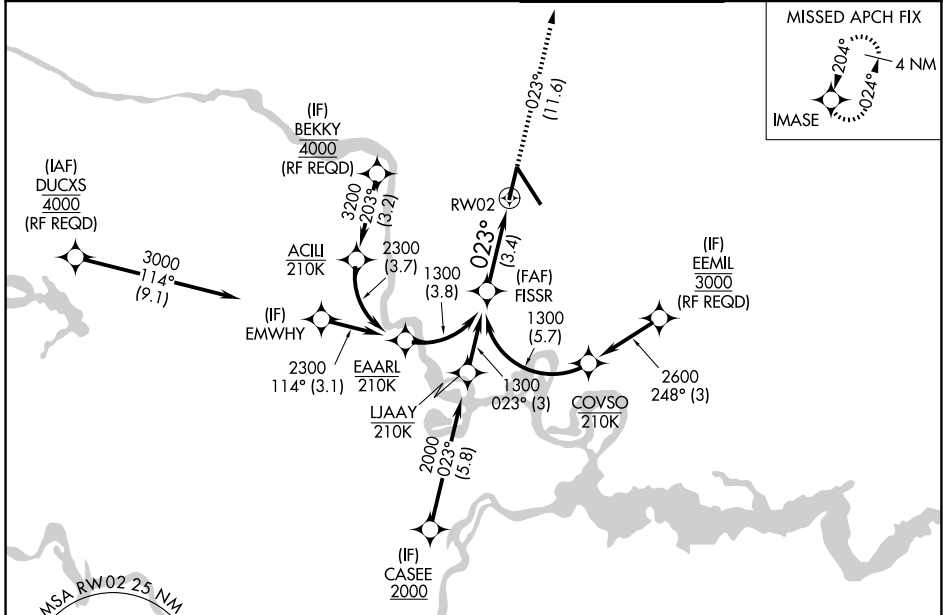
APP CRS	Rwy Ldg	6607
023°	TDZE	161
	Apt Elev	168

RNAV (RNP) Y RWY 2

RICHMOND INTL (RIC)

RNP AR APCH.	MALSR	MISSED APPROACH:
▼ For uncompensated Baro-VNAV systems, procedure NA below -11°C (13°F) or above 54°C (130°F). Rwy 2 helicopter visibility reduction below ¾ SM NA. For inop ALS, increase RNP 0.11 all Cats visibility to 1 SM and RNP 0.3 all Cats visibility to 1¼ SM.	AS	Climb to 2100 on track 023° to IMASE and hold.

ATIS	POTOMAC APP CON	RICHMOND TOWER	GND CON
119.15 263.025	126.4 282.375 (001°-185°) 126.75 307.2 (186°-360°)	121.1 257.8	121.9 348.6



NE-3, 16 APR 2026 to 14 MAY 2026

NE-3, 16 APR 2026 to 14 MAY 2026

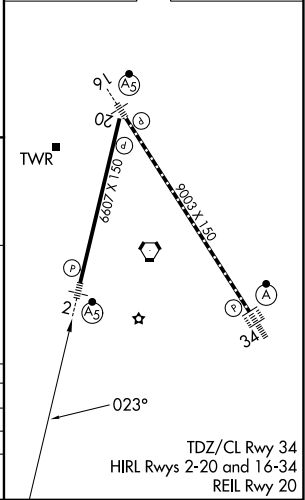
ELEV 168	TDZE 161
----------	----------

See planview for multiple IF locations.

Planview diagram showing FISSR 1300, RWY 2, and IMASE with a 023° heading and 3.4 NM distance. GP 3.00° TCH 50.

CATEGORY	A	B	C	D
RNP 0.11 DA		506-¾	345 (400-¾)	
RNP 0.30 DA		595-1	434 (500-1)	

AUTHORIZATION REQUIRED



TDZ/CL Rwy 34
HIRL Rwys 2-20 and 16-34
REIL Rwy 20