

APP CRS	Rwy Ldg	6607
203°	TDZE	168
	Apt Elev	168

RNAV (RNP) Y RWY 20

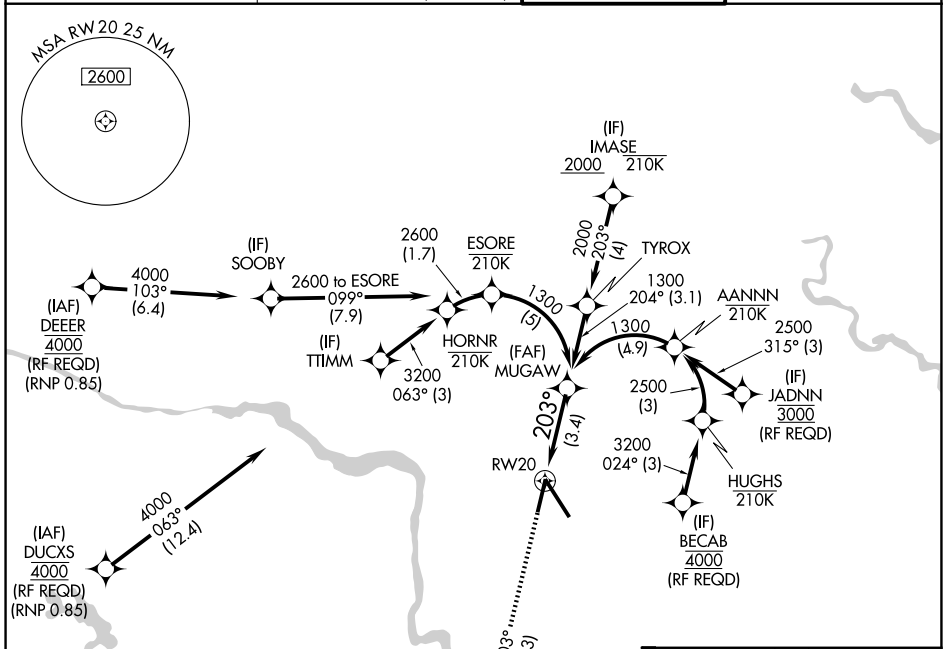
RICHMOND INTL (RIC)

RNP AR APCH.

▼ For uncompensated Baro-VNAV systems, procedure NA below -11°C or above 54°C.

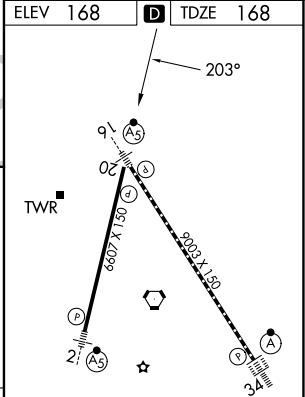
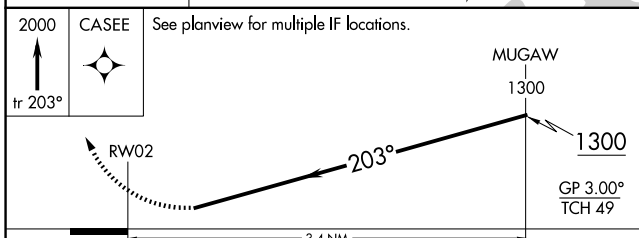
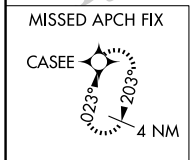
MISSED APPROACH: Climb to 2000 on track 203° CASEE and hold.

ATIS	POTOMAC APP CON	RICHMOND TOWER	GND CON
119.15 263.025	126.4 282.375 (001°-185°) 126.75 307.2 (186°-360°)	121.1 257.8	121.9 348.6



NE-3, 16 APR 2026 to 14 MAY 2026

NE-3, 16 APR 2026 to 14 MAY 2026



CATEGORY	A	B	C	D
RNP 0.11 DA		505-1	337 (400-1)	
RNP 0.30 DA		613-1½	445 (500-1½)	

AUTHORIZATION REQUIRED

TDZ/CL Rwy 34
HIRL Rwy 2-20 and 16-34
REIL Rwy 20