

WAAS CH <b>69320</b> <b>W20A</b>	APP CRS <b>203°</b>	Rwy Ldg TDZE <b>168</b> Apt Elev <b>168</b>
--	------------------------	---

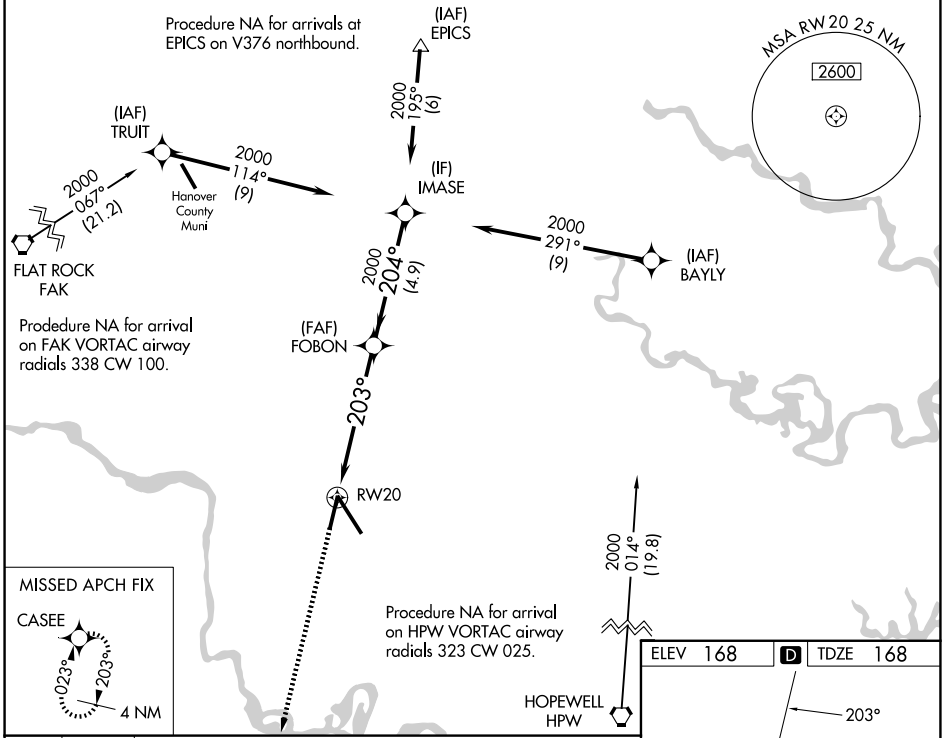
# RNAV (GPS) Z RWY 20

RICHMOND INTL (RIC)

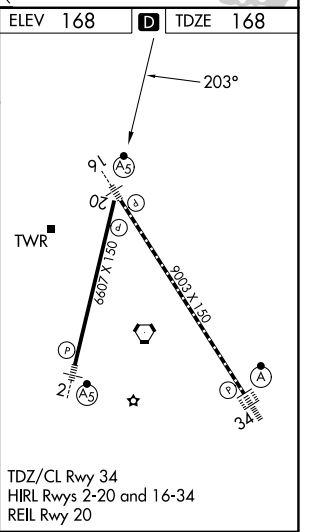
RNP APCH. MISSED APPROACH: Climb to 2000 direct CASEE and hold.

▼ For uncompensated Baro-VNAV systems, LNAV/VNAV NA below -11°C (13°F) or above 54°C (130°F). Rwy 20 helicopter visibility reduction below 3/4 SM NA.

ATIS <b>119.15 263.025</b>	POTOMAC APP CON <b>126.4 282.375</b> (001°-185°) <b>126.75 307.2</b> (186°-360°)	RICHMOND TOWER <b>121.1 257.8</b>	GND CON <b>121.9 348.6</b>
-------------------------------	--	--------------------------------------	-------------------------------



2000	CASEE	*LNAV only.			
↑	✦	FOBON	IMASE		
		2000	204°	2000	
		203°	2000	GP 3.00° TCH 49	
		1.5 NM	4.1 NM	4.9 NM	
CATEGORY		A	B	C	D
LPV DA			464-7/8	296 (300-7/8)	
LNAV/VNAV DA			603-1 1/2	435 (500-1 1/2)	
LNAV MDA		680-1	512 (600-1)	680-1 3/8	512 (600-1 3/8)
CIRCLING		680-1	512 (600-1)	700-1 1/2 532 (600-1 1/2)	720-2 552 (600-2)



NE-3, 16 APR 2026 to 14 MAY 2026

NE-3, 16 APR 2026 to 14 MAY 2026