

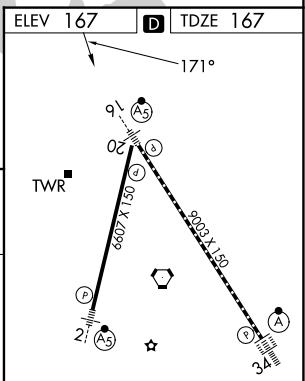
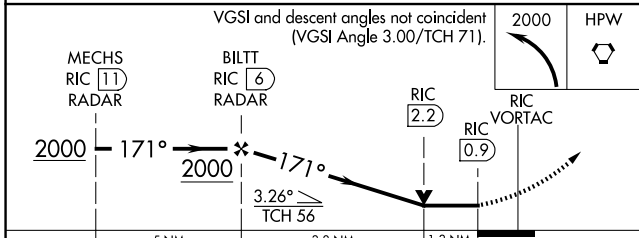
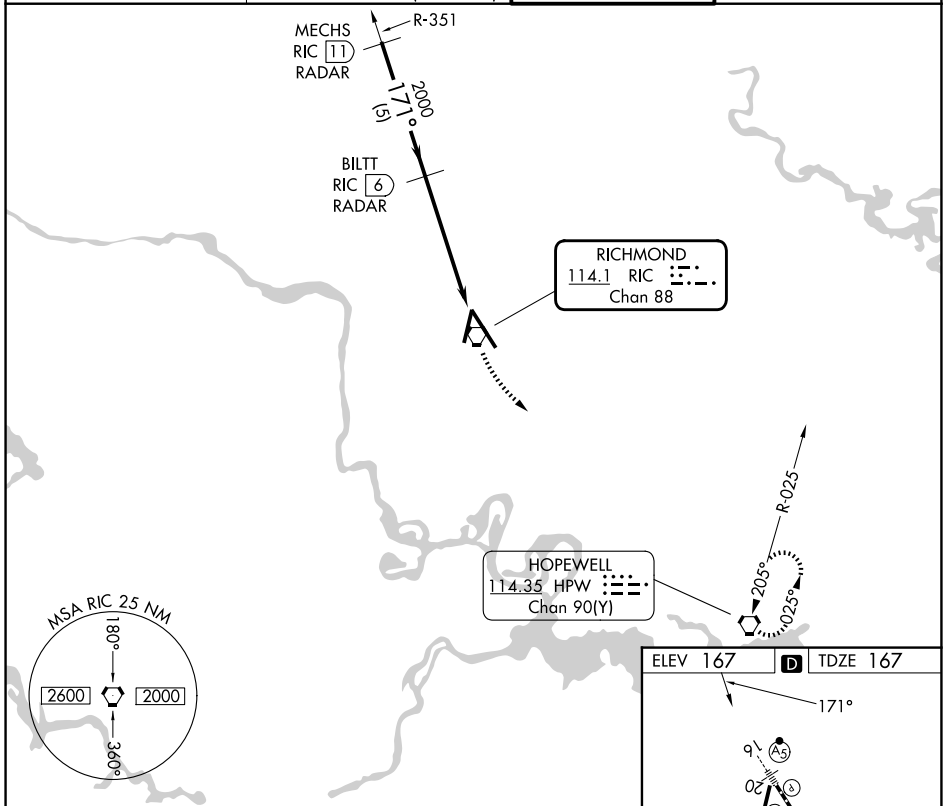
VORTAC RIC 114.1 Chan 88	APP CRS 171°	Rwy Ldg TDZE 167 Apt Elev 167	9003
--	------------------------	---	-------------

VOR RWY 16

RICHMOND INTL (RIC)

DME or RADAR required. RADAR required for procedure entry.		MALSR	MISSED APPROACH: Climbing left turn to 2000 direct HPW VORTAC and hold.
▼ Rwy 16 helicopter visibility reduction below RVR 4000 NA. For inop ALS, increase S-16 Cat A/B visibility to RVR 5500, and Cat C/D to 1 3/8 SM.			

ATIS 119.15 263.025	POTOMAC APP CON 126.4 282.375 (001°-185°) 126.75 307.2 (186°-360°)	RICHMOND TOWER 121.1 257.8	GND CON 121.9 348.6
-------------------------------	--	--------------------------------------	-------------------------------



CATEGORY	A	B	C	D												
S-16	640/40 473 (500-3/4)			640/50 473 (500-1)												
CIRCLING	660-1 493 (500-1)	700-1 1/2 533 (600-1 1/2)		720-2 553 (600-2)												
TDZ/CL Rwy 34 HIRL Rwy 2-20 and 16-34 REIL Rwy 20 FAF to MAP 5.1 NM																
<table border="1"> <tr> <td>Knots</td> <td>60</td> <td>90</td> <td>120</td> <td>150</td> <td>180</td> </tr> <tr> <td>Min:Sec</td> <td>5:06</td> <td>3:24</td> <td>2:33</td> <td>2:02</td> <td>1:42</td> </tr> </table>					Knots	60	90	120	150	180	Min:Sec	5:06	3:24	2:33	2:02	1:42
Knots	60	90	120	150	180											
Min:Sec	5:06	3:24	2:33	2:02	1:42											

NE-3, 16 APR 2026 to 14 MAY 2026

NE-3, 16 APR 2026 to 14 MAY 2026