

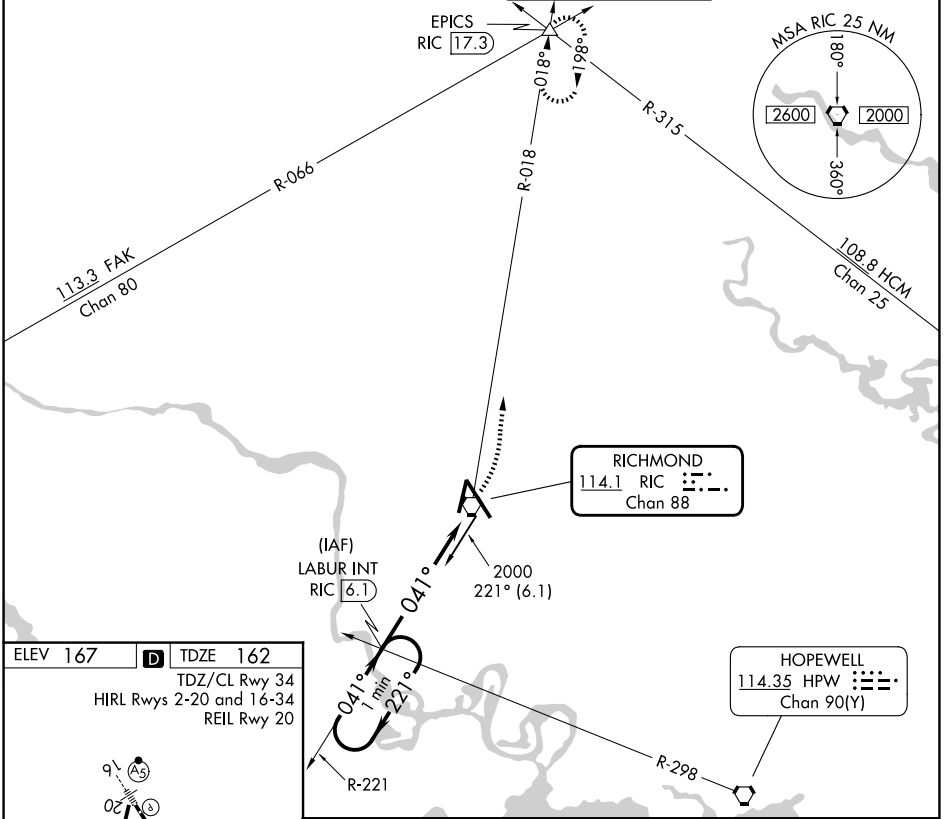
VORTAC RIC <b>114.1</b> Chan 88	APP CRS <b>041°</b>	Rwy Ldg 6607 TDZE 162 Apt Elev 167
---------------------------------------	------------------------	---

# VOR RWY 2

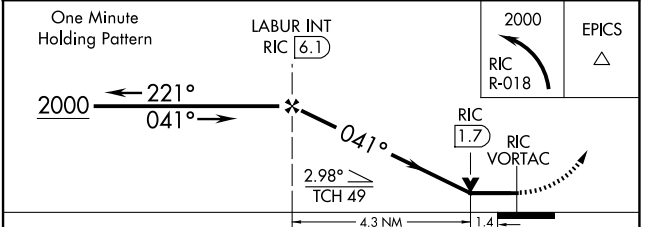
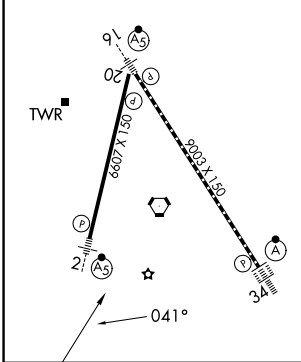
RICHMOND INTL (RIC)

<p><b>▼</b> Rwy 2 helicopter visibility reduction below ¾ SM NA. For inop ALS, increase S-2 Cat A/B visibility to 1 SM, and Cat C/D to 1½ SM.</p>	<p>MALS R AS</p>	<p>MISSED APPROACH: Climbing left turn to 2000 on RIC VORTAC R-018 to EPICS INT/ RIC 17.3 DME and hold.</p>
---	----------------------	---

<p>ATIS <b>119.15 263.025</b></p>	<p>POTOMAC APP CON <b>126.4 282.375</b> (001°-185°) <b>126.75 307.2</b> (186°-360°)</p>	<p><b>RICHMOND TOWER</b> <b>121.1 257.8</b></p>	<p>GND CON <b>121.9 348.6</b></p>
---------------------------------------	---	---	---------------------------------------



ELEV 167	<b>D</b>	TDZE 162
TDZ/CL Rwy 34		
HIRL Rws 2-20 and 16-34		
REIL Rwy 20		



CATEGORY	A	B	C	D
S-2	640-¾ 478 (500-¾)		640-1 478 (500-1)	
CIRCLING	660-1 493 (500-1)		700-1½ 533 (600-1½)	720-2 553 (600-2)

NE-3, 16 APR 2026 to 14 MAY 2026

NE-3, 16 APR 2026 to 14 MAY 2026