

VORTAC RIC <b>114.1</b> Chan <b>88</b>	APP CRS <b>323°</b>	Rwy Ldg TDZE <b>161</b> Apt Elev <b>167</b>	<b>9003</b>
--	------------------------	---	-------------

# VOR RWY 34

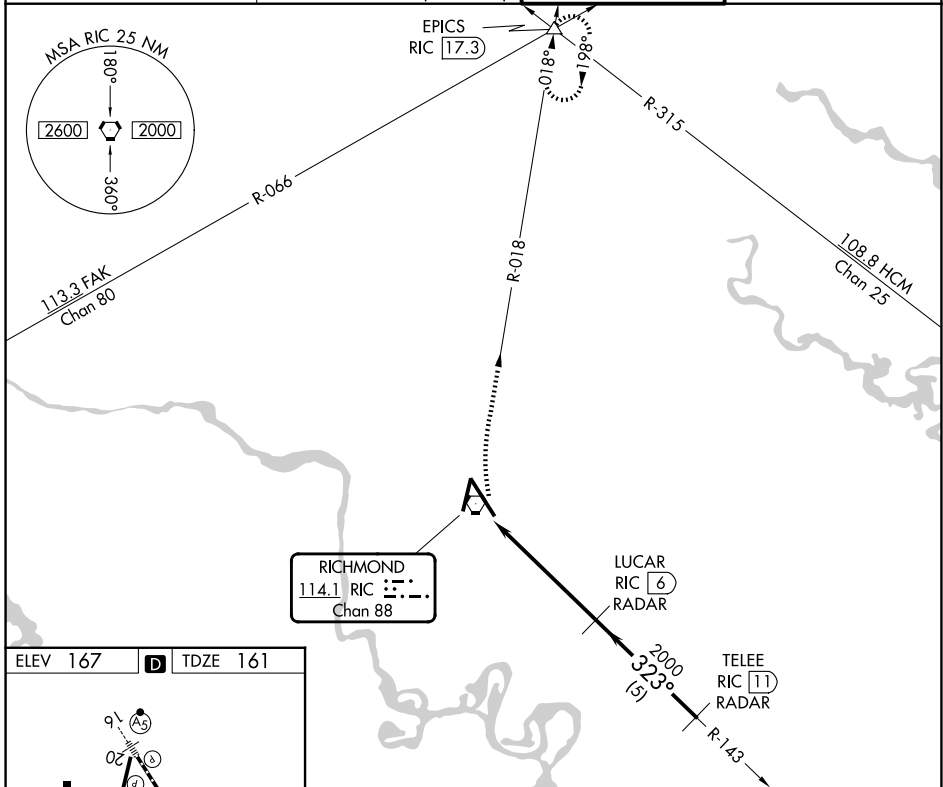
RICHMOND INTL (RIC)

DME or RADAR required. RADAR required for procedure entry.

ALSF-2  
A

MISSED APPROACH: Climbing right turn to 2000 via RIC R-018 to EPICS INT and hold.

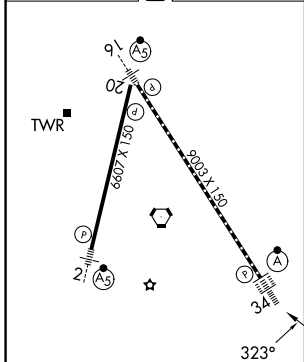
ATIS <b>119.15 263.025</b>	POTOMAC APP CON <b>126.4 282.375</b> (001°-185°) <b>126.75 307.2</b> (186°-360°)	RICHMOND TOWER <b>121.1 257.8</b>	GND CON <b>121.9 348.6</b>
-------------------------------	--	--------------------------------------	-------------------------------



NE-3, 16 APR 2026 to 14 MAY 2026

NE-3, 16 APR 2026 to 14 MAY 2026

ELEV 167	D	TDZE 161
----------	---	----------



TDZ/CL Rwy 34  
HIRL Rwys 2-20 and 16-34  
REIL Rwy 20

FAF to MAP 5.3 NM

Knots	60	90	120	150	180
Min:Sec	5:18	3:32	2:39	2:07	1:46

2000 RIC R-018	EPICS △	VGSi and descent angles not coincident (VGSi Angle 3/00/TCH 79).		
RIC VORTAC RIC 0.8	RIC 1.7	LUCAR RIC 6 RADAR	TELEE RIC 11 RADAR	2000
323°		323°		
1 NM		4.3 NM		5 NM
CATEGORY	A	B	C	D
S-34	540/24	379 (400-½)	540/40 379 (400-¾)	540/50 379 (400-1)
CIRCLING	660-1	493 (500-1)	700-1½ 533 (600-1½)	720-2 553 (600-2)