

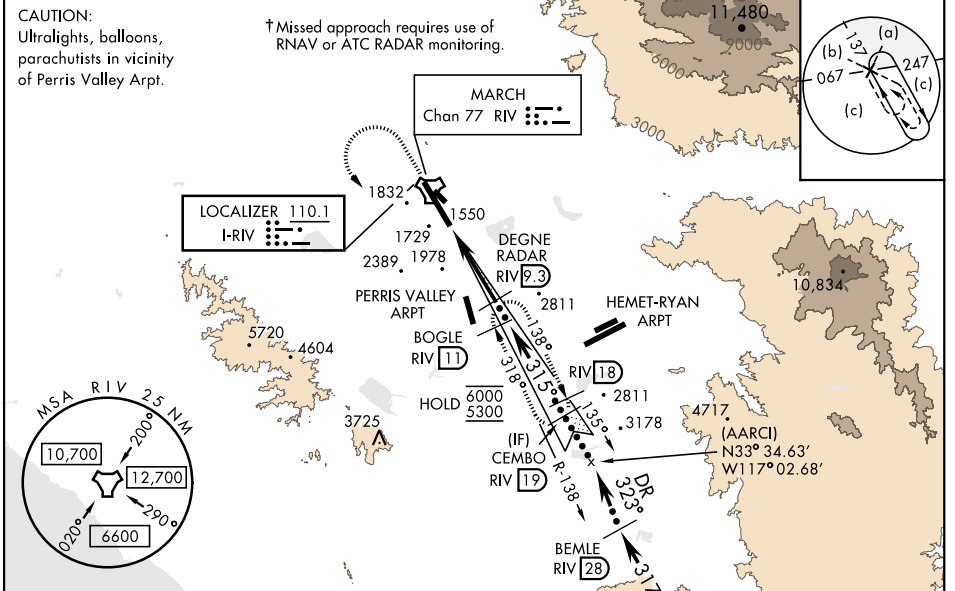
HI-ILS or LOC Z RWY 32

LOC I-RIV 110.1	APCH CRS 315°	Rwy ldg 13,302 TDZE 1497 Arpt Elev 1536	AL-348 [USAF]	MARCH ARB (KRIV)
---------------------------	-------------------------	--	---------------	------------------

▼ * When ALS inop, increase CAT CDE RVR to 40 and vis to ¾ mile.
 ** When ALS inop, increase CAT CDE RVR to 60 and vis to 1 ½ mile.
 *** Circling not authorized NE of Rwy 14-32. Rapid rising terrain.

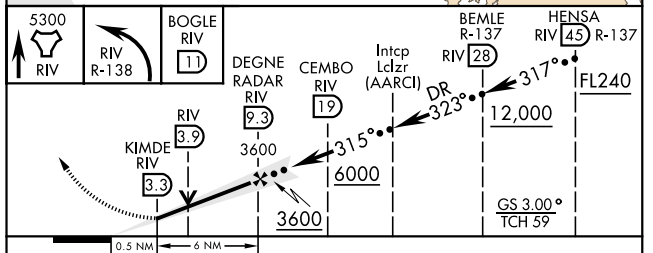
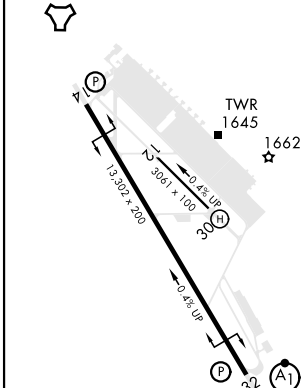
ALSF-1 MISSED APPROACH: Climb to 5300 direct RIV TACAN, then turn left to intercept RIV R-138 direct BOGLE, continue climb in hold to 5300.

ATIS 134.75 239.05	APP/DEP CON ★ 133.5 306.975	TOWER 127.65 253.5	GND CON 121.75 335.8	CLNC DEL 127.775 268.7
------------------------------	---------------------------------------	------------------------------	--------------------------------	----------------------------------



EMERG SAFE ALT 100 NM 13,700 FROM "RIV" TACAN

ELEV 1536	TDZE 1497
-----------	-----------



	FAF to MAP 5.9 NM					C	D	E
S-ILS 32 *	120	140	160	180	200	1697/24	200	(200-½)
S-LOC 32 **	2:57	2:32	2:13	1:58	1:46	1900/40	403	(400-¾)
Min:Sec	2:57	2:32	2:13	1:58	1:46	2300-2¼ 764 (800-2¼)	2440-3 904 (1000-3)	2840-3 1304 (1400-3)
C CIRCLING						2300-2¼ 764 (800-2¼)	2440-3 904 (1000-3)	2840-3 1304 (1400-3)

HI-ILS or LOC Z RWY 32

SW-3, 16 APR 2026 to 14 MAY 2026

SW-3, 16 APR 2026 to 14 MAY 2026