

# SKYES-FOUR DEPARTURE (SKYES 4.SKYES)

[USAF]

MARCH ARB (KRIV)

RIVERSIDE, CALIFORNIA

ATIS 134.75 239.05  
 CLNC DEL  
 127.775 268.7  
 GND CON  
 121.75 335.8  
 TOWER  
 127.65 253.5  
 DEP CON ★  
 133.5 306.975  
 LOS ANGELES  
 CENTER  
 132.5 284.7

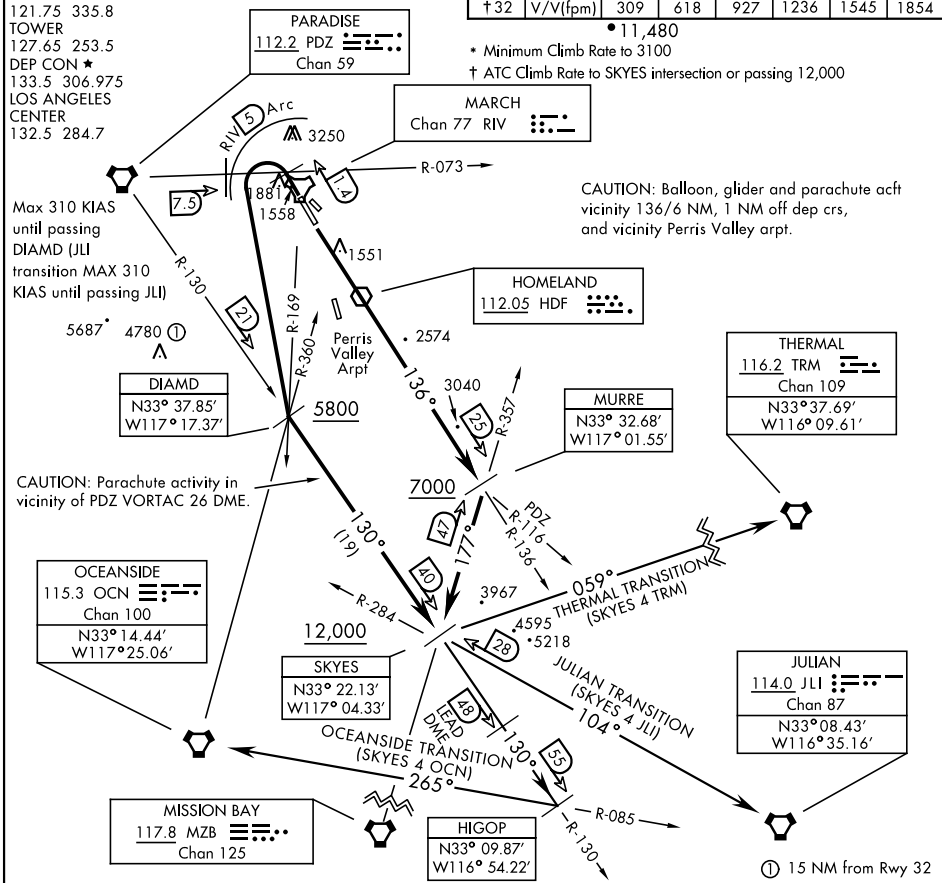
RADAR required TRM transition

Rwy	Knots	60	120	180	240	300	360
* 32	V/V(fpm)	231	462	693	924	1155	1386
† 14	V/V(fpm)	334	668	1002	1336	1670	2004
† 32	V/V(fpm)	309	618	927	1236	1545	1854

• 11,480

\* Minimum Climb Rate to 3100

† ATC Climb Rate to SKYES intersection or passing 12,000



CAUTION: Parachute activity in vicinity of PDZ VORTAC 26 DME.

CAUTION: Balloon, glider and parachute acft vicinity 136/6 NM, 1 NM off dep crs, and vicinity Perris Valley arpt.

SW-3, 16 APR 2026 to 14 MAY 2026

SW-3, 16 APR 2026 to 14 MAY 2026

① 15 NM from Rwy 32

## DEPARTURE ROUTE DESCRIPTION

**TAKEOFF RWY 14:** Climb via RIV TACAN R-136 or climb direct HDF VOR, then via HDF R-136 to MURRE, intercept MZB VORTAC R-357 to SKYES, cross MURRE at or above 7000, and SKYES at or above 12,000. Thence via transition or assigned route.

**TAKEOFF RWY 32:** Climb on track 315°, then turn left crossing PDZ VORTAC R-073/RIV TACAN 1.4 DME direct DIAMD, proceed no closer than 7.5 DME PDZ. Remain within 5 DME RIV. Cross DIAMD at or above 5800. Intercept PDZ R-130 to SKYES, cross SKYES at or above 12,000. Thence via transition or assigned route.

**JULIAN TRANSITION (SKYES 4 JLI):** From over SKYES via JLI VORTAC R-284 direct JLI. MAX 310 KIAS until passing JULIAN VORTAC.

**OCEANSIDE TRANSITION (SKYES 4 OCN):** From over SKYES via PDZ VORTAC R-130 direct HIGOP, intercept OCN VORTAC R-085 direct OCN.

**THERMAL TRANSITION (SKYES 4 TRM):** From over SKYES track 059° to TRM. (Radar required)

# SKYES-FOUR DEPARTURE (SKYES 4.SKYES)

Orig 28FEB19

RIVERSIDE, CALIFORNIA

MARCH ARB (KRIV)