

TACAN Y RWY 32

TACAN RIV Chan 77	APCH CRS 318°	Rwy ldg 13,302 TDZE 1497 Arpt Elev 1536
----------------------	------------------	---

AL-348 [USAF]

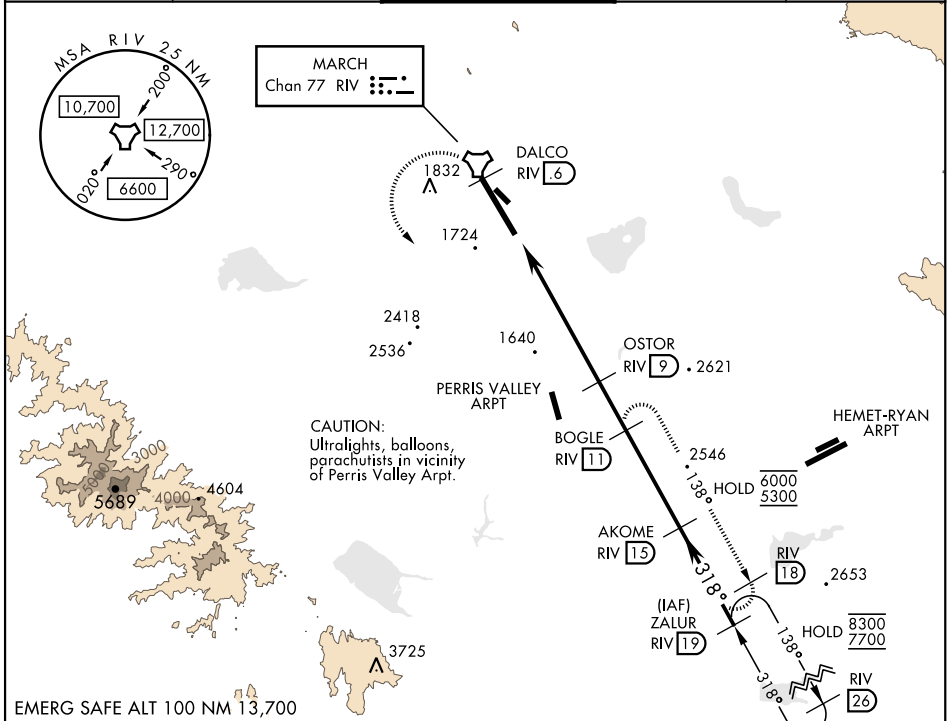
MARCH ARB (KRIV)

▼ *When ALS inop, increase CAT AB RVR to 55 and vis to 1 mile, CAT CDE vis to 1 3/8 miles.
 **Circling not authorized NE of Rwy 14-32. Rapid rising terrain.



MISSED APPROACH: Climb to 5300 on RIV TACAN R-138 to DALCO, then turn left to intercept RIV R-138 direct BOGLE, continue climb in hold to 5300.

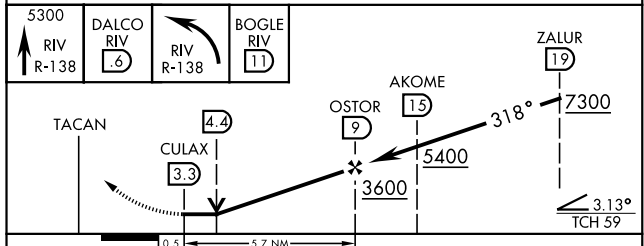
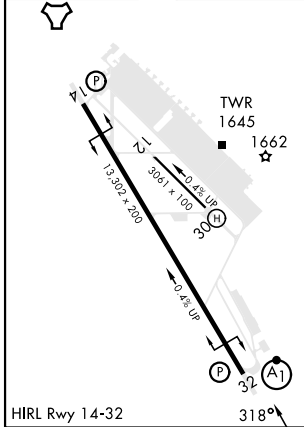
ATIS 134.75 239.05	APP/DEP CON * 133.5 306.975	TOWER 127.65 253.5	GND CON 121.75 335.8	CLNC DEL 127.775 268.7
-----------------------	--------------------------------	-----------------------	-------------------------	---------------------------



CAUTION:
Ultralights, balloons,
parachutists in vicinity
of Perris Valley Arpt.

EMERG SAFE ALT 100 NM 13,700

ELEV 1536	TDZE 1497
-----------	-----------



CATEGORY	A	B	C	D	E
S-32 *	2040/24	543 (600-1/2)	2040/60	543 (600-1 1/8)	
C CIRCLING **	2180-1 644 (700-1)	2260-1 724 (800-1)	2300-2 1/4 764 (800-2 1/4)	2440-3 904 (1000-3)	2840-3 1304 (1400-3)

TACAN Y RWY 32

SW-3, 16 APR 2026 to 14 MAY 2026

SW-3, 16 APR 2026 to 14 MAY 2026