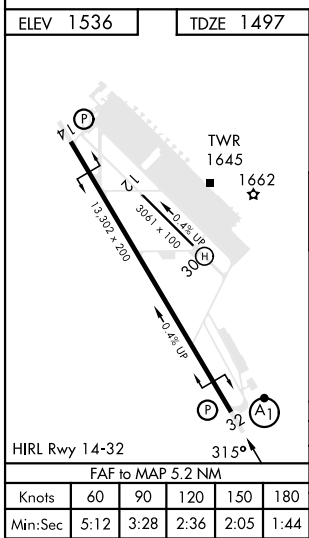
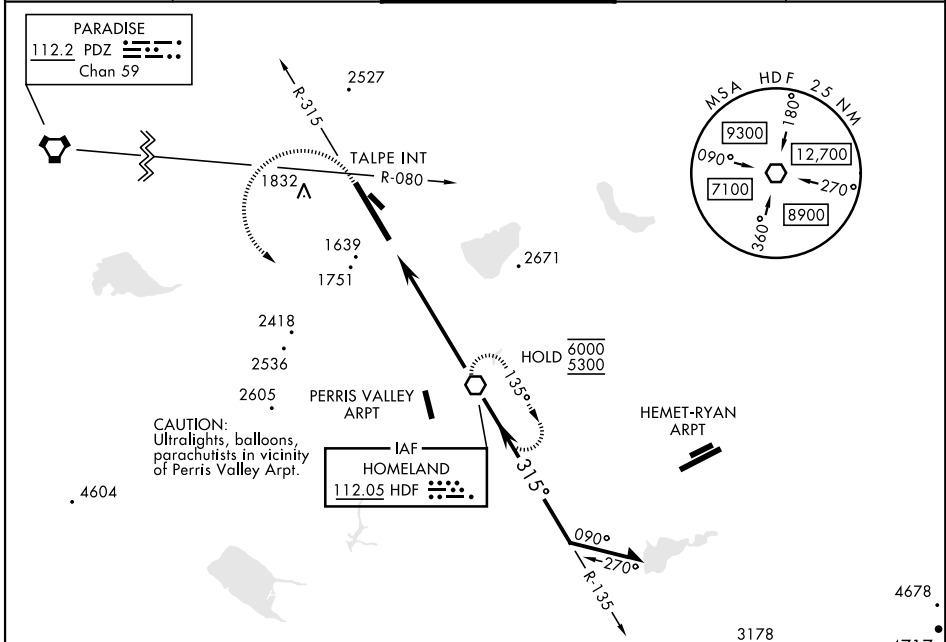


VOR Y RWY 32

VOR HDF 112.05	APCH CRS 315°	Rwy ldg 13,302 TDZE 1497 Arpt Elev 1536	AL-348 [USAF]	MARCH ARB (KRIV)	*When ALS inop, increase CAT AB RVR to 60 and vis to 1½ mile, CAT CDE vis to 1½ miles. **Circling not authorized NE of Rwy 14-32. Rapid rising terrain.
--------------------------	-------------------------	--	---------------	------------------	---

ATIS 134.75 239.05	APP/DEP CON ★ 133.5 306.975	TOWER 127.65 253.5	GND CON 121.75 335.8	CLNC DEL 127.775 268.7
------------------------------	---------------------------------------	------------------------------	--------------------------------	----------------------------------

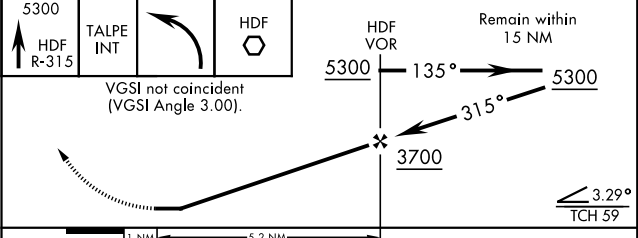


ELEV 1536 **TDZE 1497**

EMERG SAFE ALT 100 NM 13,700

5300 ↑ HDF R-315	TALPE INT	HDF ○	Remain within 15 NM
---------------------------	--------------	----------	------------------------

VGSI not coincident
(VGSI Angle 3.00).



CATEGORY	A	B	C	D	E
S-32 *	2040/40 543 (600-¾)		2040/60	543	(600-1½)
CIRCLING **	2180-1½ 644 (700-1½)	2260-1½ 724 (800-1½)	2300-2¼ 764 (800-2¼)	2440-3 904 (1000-3)	2840-3 1304 (1400-3)

VOR Y RWY 32

SW-3, 16 APR 2026 to 14 MAY 2026

SW-3, 16 APR 2026 to 14 MAY 2026