

LOC I-MCU 110.7	APP CRS 044°	Rwy Ldg TDZE Apt Elev	8001 535 559
---------------------------	------------------------	-----------------------------	---

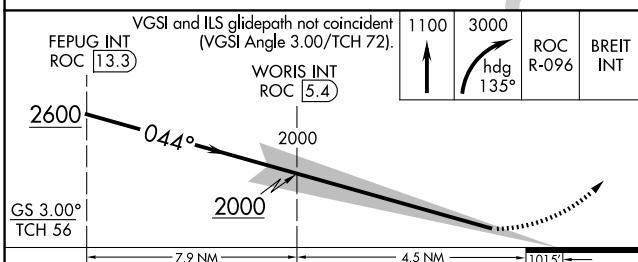
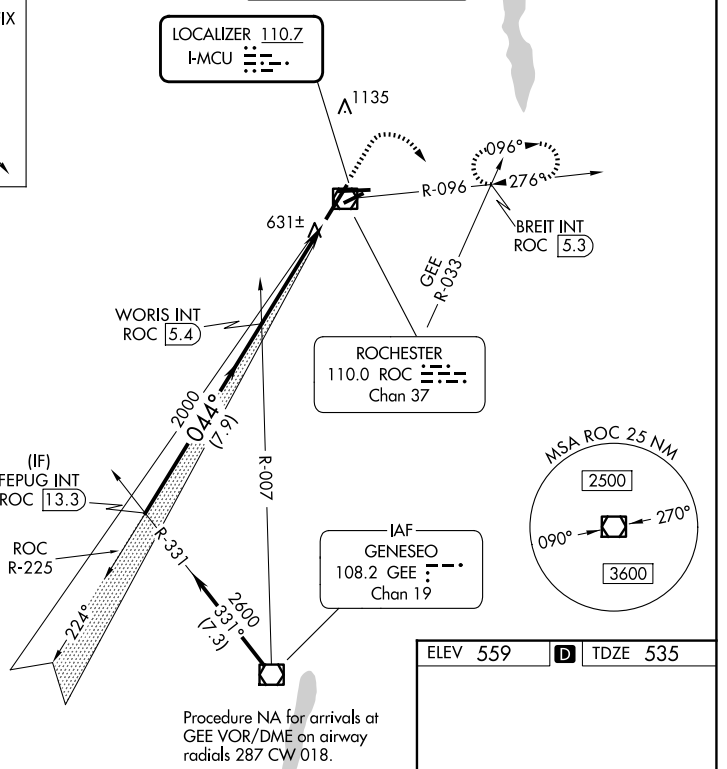
ILS RWY 4 (SA CAT I)
FREDERICK DOUGLASS/GREATER ROCHESTER INTL (ROC)

<p>Requires specific OPSPEC, MSPEC, or LOA approval and use of the HUD to DA.</p>	<p>ALSF-2</p>	<p>MISSED APPROACH: Climb to 1100 then climbing right turn to 3000 on heading 135° and ROC VOR/DME R-096 to BREIT INT/ROC 5.3 DME and hold, continue climb-in-hold to 3000.</p>
---	---------------	---

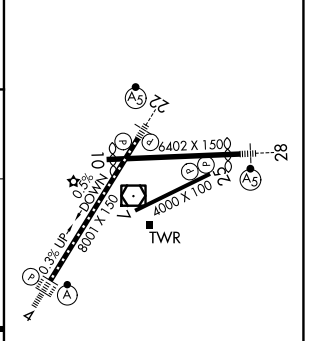
<p>ATIS 124.825</p>	<p>ROCHESTER APP CON 119.55 269.6</p>	<p>ROCHESTER TOWER 118.3 254.3</p>	<p>GND CON 121.7</p>
--------------------------------	--	---	---------------------------------

ALTERNATE MISSED APCH FIX

GENESECO
GEE
108.2
Chan 19



ELEV 559	D TDZE 535
----------	-------------------



CATEGORY	A	B	C	D
S-ILS 4	RA 157/14 150 DA 685			

SA CATEGORY I ILS - SPECIAL AIRCREW & AIRCRAFT CERTIFICATION REQUIRED

TDZ/CL Rwy 4
REIL Rwy 7, 10 and 25
MIRL Rwy 7-25
HIRL Rwy 10-28 and 4-22

ILS RWY 4 (SA CAT I)

NE-2, 16 APR 2026 to 14 MAY 2026

NE-2, 16 APR 2026 to 14 MAY 2026