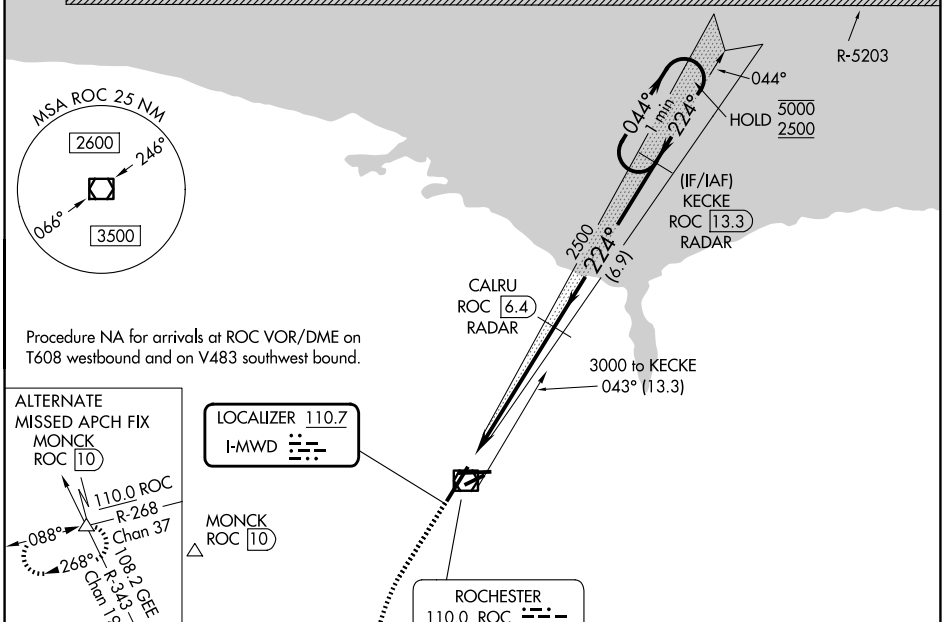


LOC I-MWD 110.7	APP CRS 224°	Rwy Ldg TDZE Apt Elev	8001 559 559
---------------------------	------------------------	-----------------------------	---

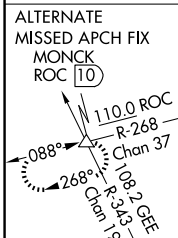
ILS or LOC RWY 22

FREDERICK DOUGLASS/GREATER ROCHESTER INTL (ROC)

DME or RADAR required.		MALSR	MISSED APPROACH: Climb to 1000 then climbing left turn to 4000 direct GEE VOR/DME and hold.
⚠ When R-5203 active hold in lieu NA. DME from ROC VOR/DME. ⚠ DME use requires simultaneous reception of I-MWD and ROC DME. * RVR 1800 authorized with use of FD or AP or HUD to DA.			
ATIS 124.825	ROCHESTER APP CON 119.55 269.6	ROCHESTER TOWER 118.3 254.3	GND CON 121.7



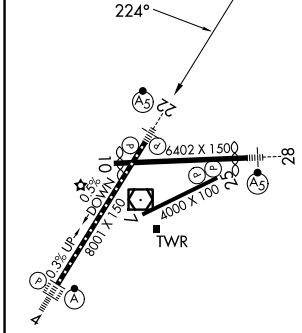
Procedure NA for arrivals at ROC VOR/DME on T608 westbound and on V483 southwest bound.



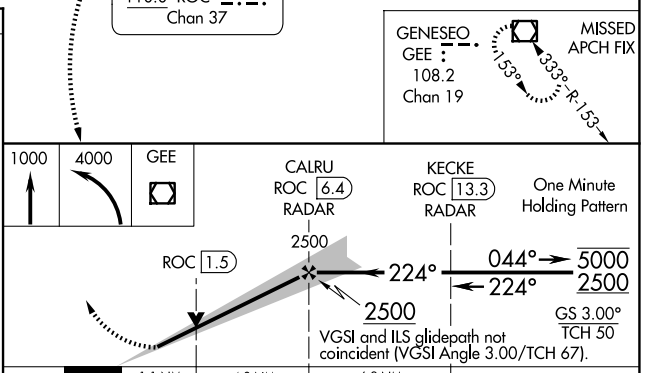
LOCALIZER 110.7
I-MWD

MONCK ROC 10

ELEV 559	D	TDZE 559
----------	----------	----------



FAF to MAP 5.9 NM					
Knots	60	90	120	150	180
Min:Sec	5:54	3:56	2:57	2:22	1:58



CATEGORY	A	B	C	D
S-ILS 22 *	759/24 200 (200-1/2)			
S-LOC 22	980/24	421 (500-1/2)	980/40	421 (500-3/4)
CIRCLING	1060-1 501 (600-1)		1460-2 3/4 901 (1000-2 3/4) 1460-3 901 (1000-3)	

NE-2, 16 APR 2026 to 14 MAY 2026

NE-2, 16 APR 2026 to 14 MAY 2026