

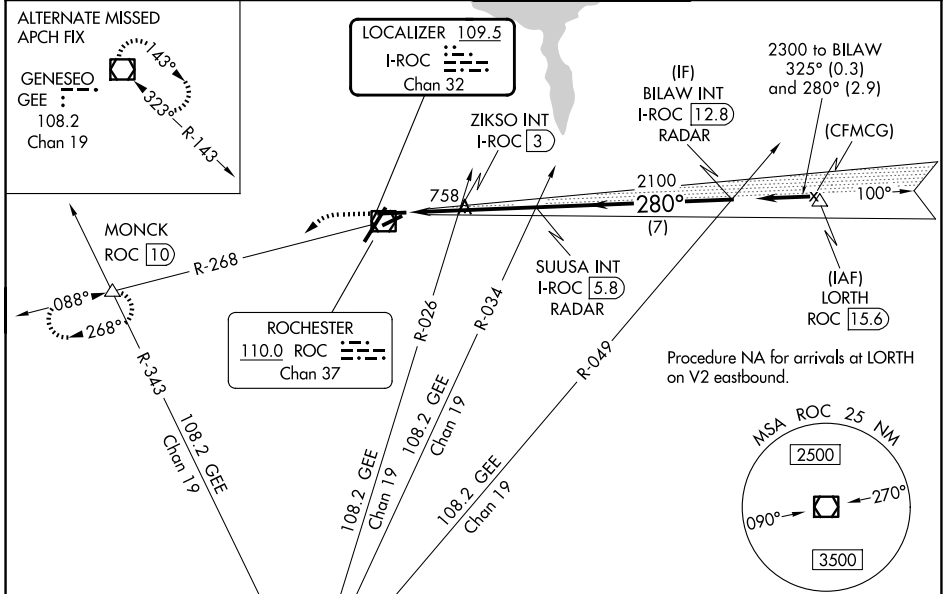
LOC/DME I-ROC	APP CRS	Rwy Ldg	<b>5802</b>
<b>109.5</b>	<b>280°</b>	TDZE	<b>550</b>
Chan <b>32</b>		Apt Elev	<b>559</b>

# ILS or LOC RWY 28

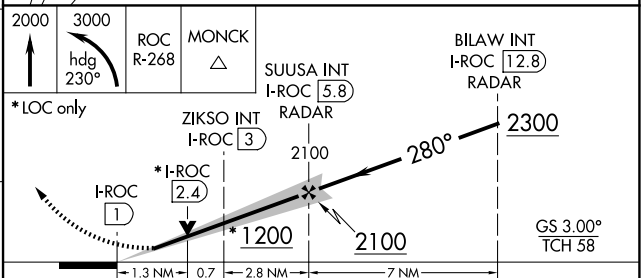
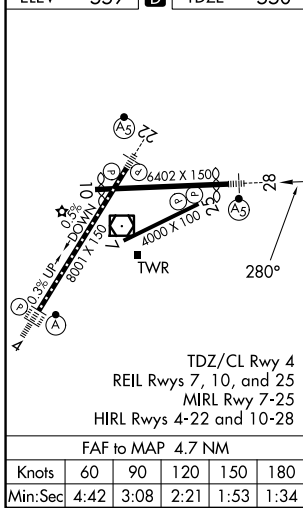
FREDERICK DOUGLASS/GREATER ROCHESTER INTL (ROC)

**⚠** Helicopter visibility reduction below RVR 4000 NA.  
**⚠** Multiple unshielded lights in final approach area.  
 For inop MALSR, increase S-ILS 28 all Cats visibility to RVR 4500 and S-LOC 28 Cat A/B visibility to RVR 5500. For inop MALSR with ZIKSO fix minimums, increase S-LOC 28 Cat A/B visibility to RVR 5500 and Cat C/D visibility to 1 $\frac{1}{2}$ %.  
**MALSR**  
  
**MISSED APPROACH:** Climb to 2000 then climbing left turn to 3000 on heading 230° and ROC VOR/DME R-268 to MONCK INT/ROC 10 DME and hold.

ATIS <b>124,825</b>	ROCHESTER APP CON <b>119.55 269.6</b>	ROCHESTER TOWER <b>118.3 254.3</b>	GND CON <b>121.7</b>
------------------------	--	---------------------------------------	-------------------------



ELEV	<b>559</b>	<b>D</b>	TDZE	<b>550</b>
------	------------	----------	------	------------



CATEGORY	A	B	C	D
S-ILS 28	821/40 271 (300- $\frac{3}{4}$ )			
S-LOC 28	1200/40	650 (700- $\frac{3}{4}$ )	1200-1 $\frac{1}{2}$	650 (700-1 $\frac{1}{2}$ )
CIRCLING	1200-1	641 (700-1)	1500-2 $\frac{3}{4}$ 941 (1000-2 $\frac{3}{4}$ )	1500-3 941 (1000-3)
ZIKSO FIX MINIMUMS (DUAL VOR RECEIVERS OR DME REQUIRED)				
S-LOC 28	1020/40	470 (500- $\frac{3}{4}$ )	1020/50	470 (500-1)
CIRCLING	1060-1	501 (600-1)	1500-2 $\frac{3}{4}$ 941 (1000-2 $\frac{3}{4}$ )	1500-3 941 (1000-3)

NE-2, 16 APR 2026 to 14 MAY 2026

NE-2, 16 APR 2026 to 14 MAY 2026