

ROCHESTER, NEW YORK

AL-351 (FAA)

25275

VOR/DME ROC 110.0 Chan 37	APP CRS 052°	Rwy Ldg 8001 TDZE 535 Apt Elev 559
---	------------------------	---

VOR RWY 4

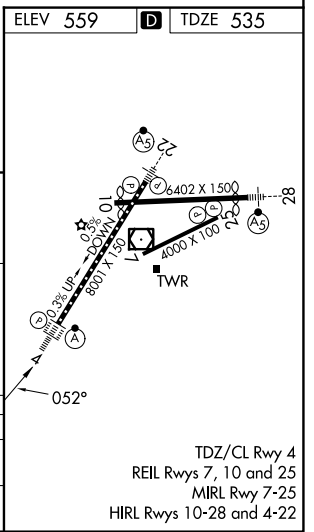
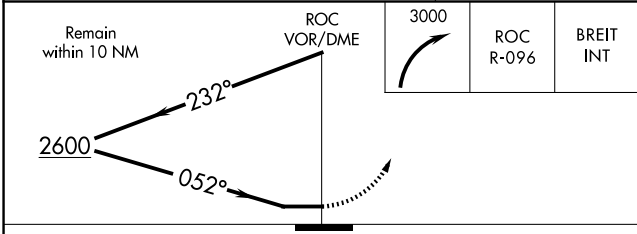
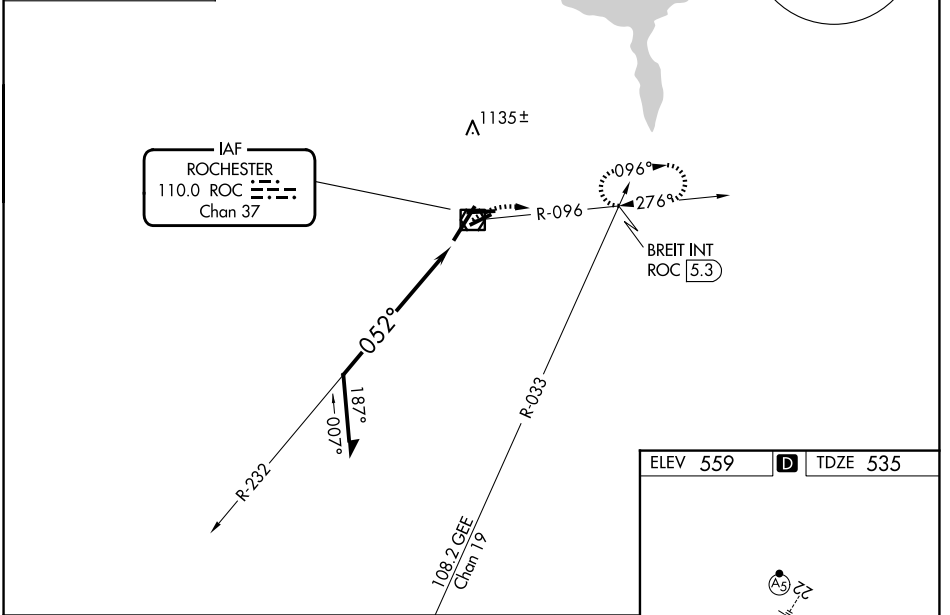
FREDERICK DOUGLASS/GREATER ROCHESTER INTL (ROC)

<p>▽ For inop ALSF-2, increase S-4 Cat A visibility to RVR 5000, increase Cats C/D visibility to 2. Helicopter visibility reduction below RVR 4000 NA.</p>	<p>ALSF-2</p>	<p>MISSED APPROACH: Climbing right turn to 3000 on ROC VOR/DME R-096 to BREIT INT/ROC 5.3 DME and hold, continue climb-in-hold to 3000.</p>
---	----------------------	--

<p>ATIS 124.825</p>	<p>ROCHESTER APP CON 119.55 269.6</p>	<p>ROCHESTER TOWER 118.3 254.3</p>	<p>GND CON 121.7</p>
--------------------------------	--	---	---------------------------------

GENESEO
GEE
108.2
Chan 19

ALTERNATE MISSED APCH FIX



CATEGORY	A	B	C	D
S-4	1280/40	745 (800-¾)	1280-1¾	745 (800-1¾)
CIRCLING	1280-1 721 (800-1)	1280-1¼ 721 (800-1¼)	1500-2¾ 941 (1000-2¾)	1500-3 941 (1000-3)

ROCHESTER, NEW YORK
Amdt 12A 05MAR15

FREDERICK DOUGLASS/GREATER ROCHESTER INTL (ROC)
43°07'N-77°40'W

VOR RWY 4

NE-2, 16 APR 2026 to 14 MAY 2026

NE-2, 16 APR 2026 to 14 MAY 2026

TDZ/CL Rwy 4
REIL Rwys 7, 10 and 25
MIRL Rwy 7-25
HIRL Rwys 10-28 and 4-22