

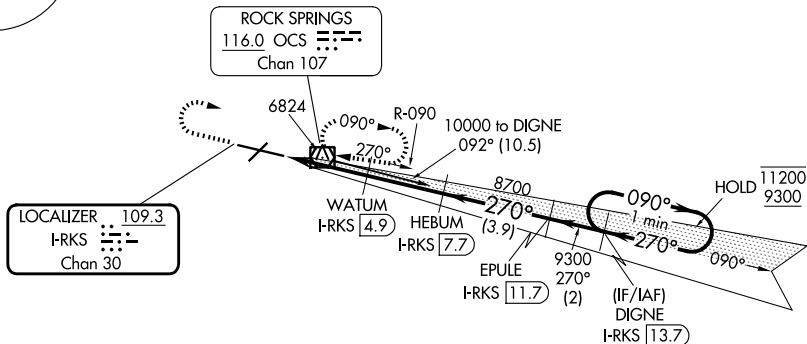
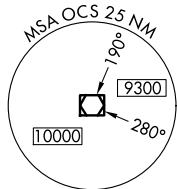
LOC/DME I-RKS <b>109.3</b> Chan <b>30</b>	APP CRS <b>270°</b>	Rwy Ldg <b>10002</b> TDZE <b>6765</b> Apt Elev <b>6765</b>
---	------------------------	--

# ILS or LOC RWY 27

SOUTHWEST WYOMING RGNL (R.KS)

DME required.	MALSR	MISSED APPROACH: Climb to 7600 then climbing right turn to 9300 direct OCS VOR/DME and hold, continue climb-in-hold to 9300.
---------------	-------	--

AWOS-3 <b>118.375</b>	SALT LAKE CENTER <b>124.35 353.5</b>	UNICOM <b>122.8 (CTAF) 0</b>
--------------------------	---	---------------------------------



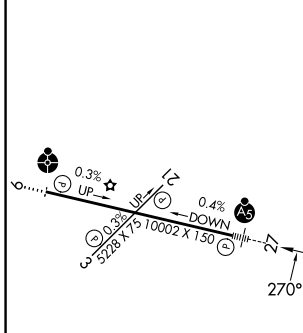
**LOCALIZER 109.3**  
I-RKS [ ]  
Chan 30

**ROCK SPRINGS**  
116.0 OCS [ ]  
Chan 107

NW-1, 16 APR 2026 to 14 MAY 2026

NW-1, 16 APR 2026 to 14 MAY 2026

ELEV 6765	<b>D</b>	TDZE 6765
-----------	----------	-----------



7600	9300	OCS	Use I-RKS DME when on the localizer course.	
*LOC only.		HEBUM I-RKS [7.7]	EPULE I-RKS [11.7]	DIGNE I-RKS [13.7]
		One Minute Holding Pattern		
		WATUM I-RKS [4.9]	8700	090° → 11200
		I-RKS [2.7]	270°	← 270° 9300
		I-RKS [1.8]	7800*	GS 3.00°
		0.9	2.2 NM	2.8 NM
		3.9 NM	2 NM	TCH 55

CATEGORY	A	B	C	D
S-ILS-27		6965-1/2	200 (200-1/2)	
S-LOC 27		7100-1/2	335 (400-1/2)	
CIRCLING	7140-1 375 (400-1)	7220-1 455 (500-1)	7220-1 1/2 455 (500-1 1/2)	7540-2 1/2 775 (800-2 1/2)

MIRL Rwy 3-21  
HIRL Rwy 9-27  
REIL Rws 3 and 21