

WAAS CH 69302 W21A	APP CRS 215°	Rwy Ldg 13000 TDZE 3633 Apt Elev 3671
--	------------------------	--

RNAV (GPS) RWY 21

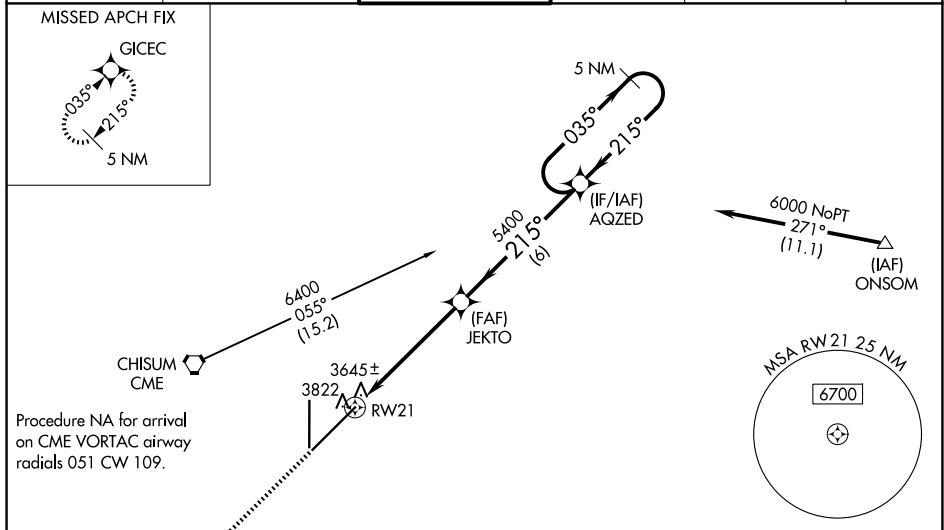
ROSWELL AIR CENTER (ROW)

RNP APCH-GPS.

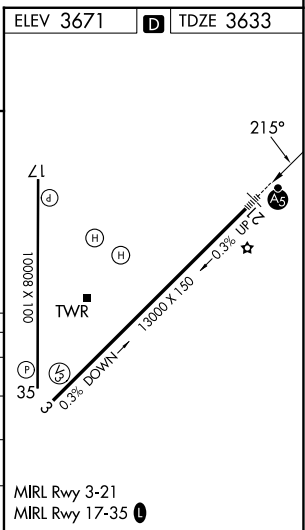
ASR For uncompensated Baro-VNAV systems, LNAV/VNAV NA below -22°C or above 41°C. When local altimeter setting not received, use Artesia altimeter setting: increase LPV DA to 3979 feet and all visibilities 1/8 SM; increase LNAV/VNAV DA to 4075 feet and all visibilities 1/4 SM; increase all MDAs 80 feet and LNAV Cat C/D visibility 1/8 SM and Circling Cat D visibility 1/4 SM. Baro-VNAV and VDP NA when using Artesia altimeter setting. For inop ALS, increase LPV all Cats visibility to 3/8 SM, and LNAV/VNAV all Cats visibility to 1 SM. For inop ALS when using Artesia altimeter setting, increase LPV all Cats visibility to 1 SM and LNAV/VNAV all Cats visibility to 1 1/8 SM.

MALSRL MISSED APPROACH: Climb to 6300 direct GICEC and hold.

ATIS 128.45 306.2	ROSWELL APP CON * 119.6 239.0	ROSWELL TOWER * 118.5(CTAF) 233.7	GND CON 121.9 348.6	CLNC DEL 132.875 282.25	UNICOM 122.95
-----------------------------	---	---	-------------------------------	-----------------------------------	-------------------------



6300	GICEC	AQZED			
↑	✧	JETKO	5 NM Holding Pattern		
1.3 NM to RW21			035° →	← 215°	6000
1.3 NM	4 NM	6 NM			GP 3.00° TCH 50
CATEGORY	A	B	C	D	
LPV DA	3899-1/2		266 (300-1/2)		
LNAV/VNAV DA	3995-5/8		362 (400-3/8)		
LNAV MDA	4080-1/2 447 (500-1/2)		4080-7/8 447 (500-7/8)		
CIRCLING	4140-1 1/4 469 (500-1 1/4)		4140-1 1/2 469 (500-1 1/2) 4300-2 629 (700-2)		



SW-1, 16 APR 2026 to 14 MAY 2026

SW-1, 16 APR 2026 to 14 MAY 2026