

VOR/DME MCC 109.2 Chan 29	APP CRS 333°	Rwy Ldg 10599 TDZE 72 Apt Elev 77
---	------------------------	--

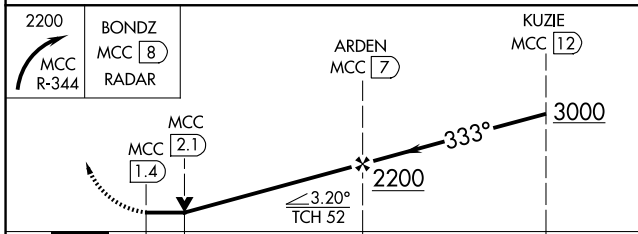
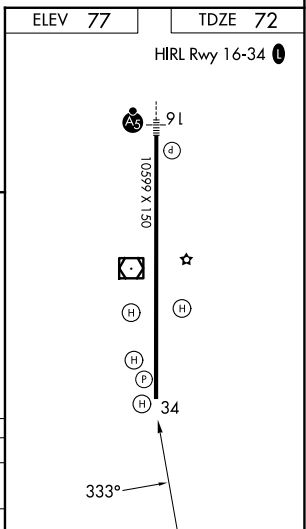
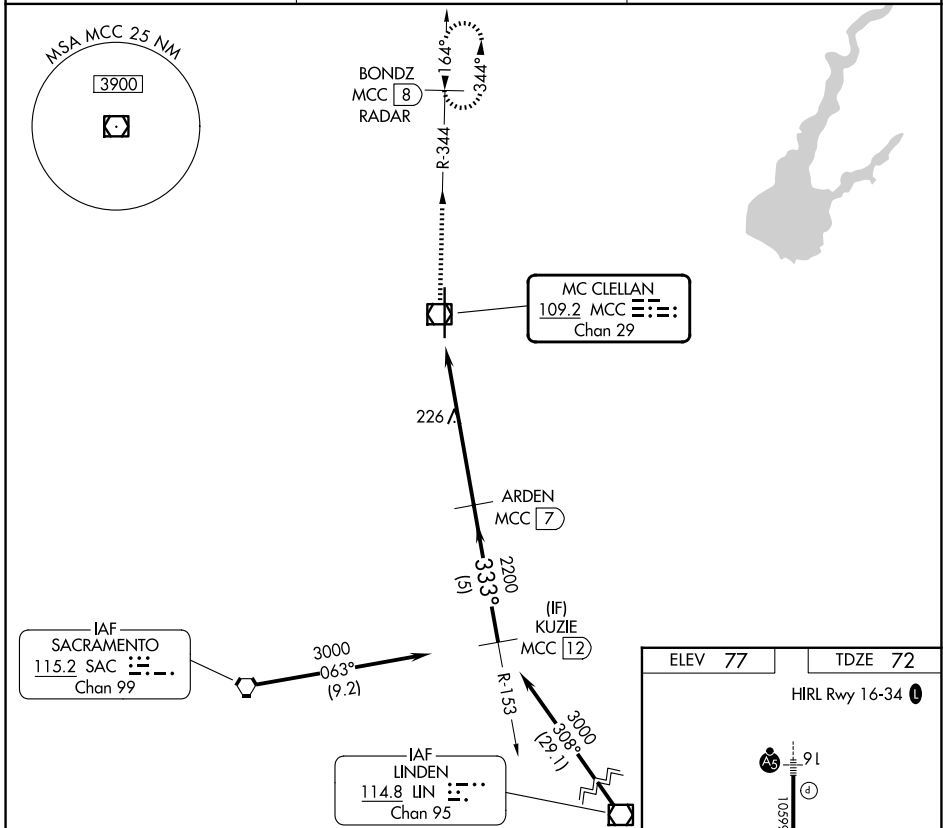
VOR/DME RWY 34

MC CLELLAN AIRFIELD (MCC)

NA VDP NA when using Sacramento Intl altimeter setting. When local altimeter setting not received, use Sacramento Intl altimeter setting and increase all MDAs 40 feet.

MISSED APPROACH: Climbing right turn to 2200 via MCC R-344 to BONDZ/MCC 8 DME/RADAR and hold.

AWOS-3 125.975	NORCAL APP CON 127.4 317.5	UNICOM 122.975 (CTAF)
--------------------------	--------------------------------------	---------------------------------



CATEGORY	A	B	C	D
S-34	500-1	428 (500-1)	500-1½ 428 (500-1½)	500-1½ 428 (500-1½)
CIRCLING	NA			

SW-2, 16 APR 2026 to 14 MAY 2026

SW-2, 16 APR 2026 to 14 MAY 2026