

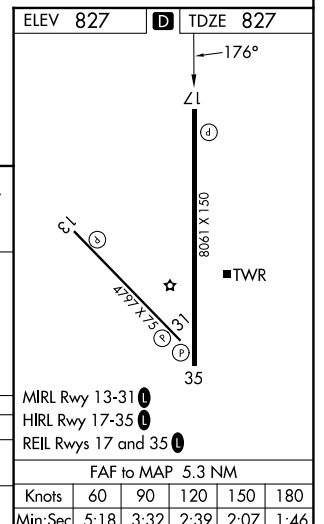
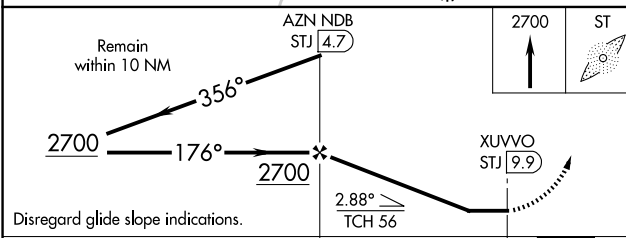
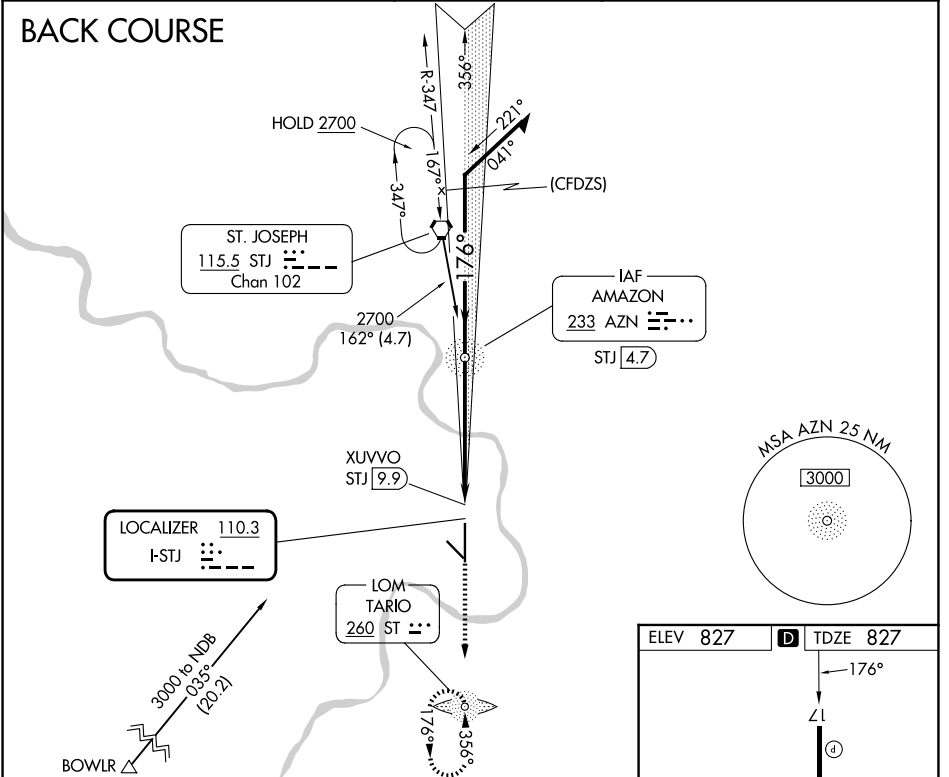
LOC I-STJ <b>110.3</b>	APP CRS <b>176°</b>	Rwy Ldg TDZE Apt Elev	<b>8061</b> <b>827</b> <b>827</b>
---------------------------	------------------------	-----------------------------	---

# LOC BC RWY 17

ROSECRANS MEML (STJ)

ADF required.		MISSED APPROACH: Climb to 2700 direct ST LOM and hold.	
DME from STJ VORTAC, simultaneous reception of I-STJ and STJ DME required. ASR/PAR			

ATIS <b>125.05</b>	ST. JOSEPH APP CON * <b>120.35 360.8</b>	ST. JOSEPH TOWER * <b>126.9 (CTAF) 239.0</b>	GND CON <b>121.9</b>	UNICOM <b>122.95</b>
-----------------------	---	---	-------------------------	-------------------------



CATEGORY	A	B	C	D
S-17	1280-1	453 (500-1)	1280-1 <sup>3</sup> / <sub>8</sub>	453 (500-1 <sup>3</sup> / <sub>8</sub> )
CIRCLING	1400-1 573 (600-1)	1420-1 593 (600-1)	1620-2 <sup>1</sup> / <sub>4</sub> 793 (800-2 <sup>1</sup> / <sub>4</sub> )	1640-2 <sup>3</sup> / <sub>4</sub> 813 (900-2 <sup>3</sup> / <sub>4</sub> )

NC-3, 16 APR 2026 to 14 MAY 2026

NC-3, 16 APR 2026 to 14 MAY 2026