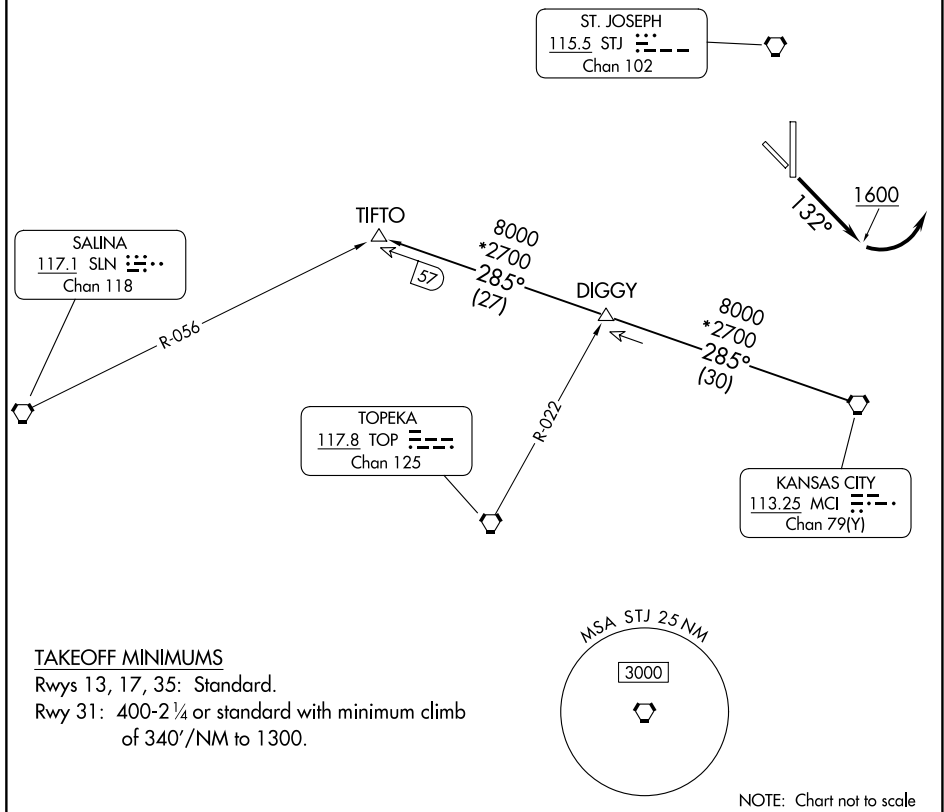


**TOP ALTITUDE:
10000**

RADAR and DME required.

ST. JOSEPH DEP CON ★
120.35 360.8
ATIS
125.05



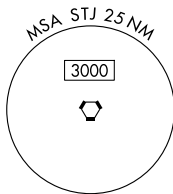
NC-3, 16 APR 2026 to 14 MAY 2026

NC-3, 16 APR 2026 to 14 MAY 2026

TAKEOFF MINIMUMS

Rwys 13, 17, 35: Standard.

Rwy 31: 400-2 ¼ or standard with minimum climb of 340'/NM to 1300.



NOTE: Chart not to scale



DEPARTURE ROUTE DESCRIPTION

TAKEOFF RUNWAY 13: Climb on heading 132° to 1600 before turning left, thence. . . .

. . . .climb on assigned heading for RADAR vectors to appropriate route. Maintain 10000, expect filed altitude 10 minutes after departure.

TAKEOFF ALL OTHER RUNWAYS: Climb on assigned heading for RADAR vectors to appropriate route. Maintain 10000, expect filed altitude 10 minutes after departure.

TIFTO TRANSITION (TIFTO8.TIFTO): From over MCI VORTAC on MCI R-285 to TIFTO.