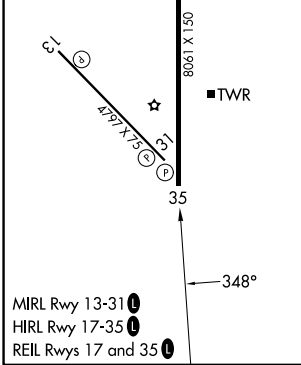
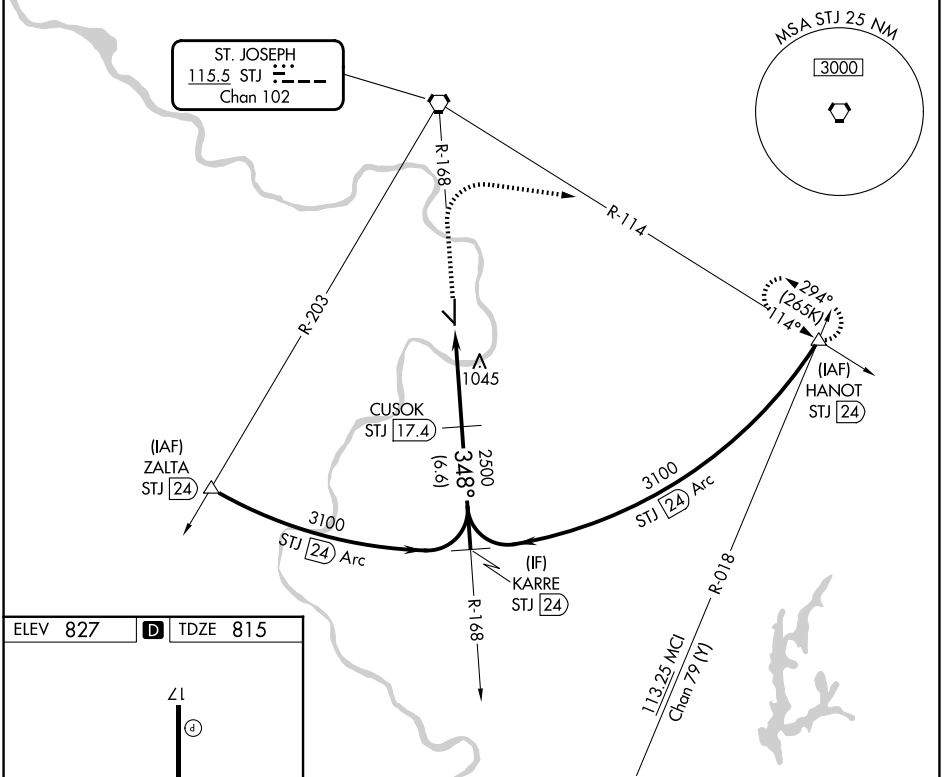


STJ VORTAC 115.5 Chan 102	APP CRS 348°	Rwy Ldg TDZE Apt Elev	8061 815 827
---	------------------------	-----------------------------	---

VOR or TACAN RWY 35

ROSECRANS MEML (STJ)

DME required.		MISSED APPROACH: Climb to 2700 then climbing right turn to 3100 on heading 090° and STJ VORTAC R-114 to HANOT/24 DME and hold.		
ATIS 125.05	ST. JOSEPH APP CON * 120.35 360.8	ST. JOSEPH TOWER * 126.9 (CTAF) 239.0	GND CON 121.9	UNICOM 122.95



2700	3100	STJ R-114	HANOT	KARRE STJ [24]	
↑	hdg 090°	STJ [17.4]	△		
		STJ [13.5]	CUSOK STJ [17.4]		
		STJ [11.9]			
		1.6	3.9 NM	6.6 NM	
		348°	2500	3100	
		≤ 2.79°	TCH 64		
CATEGORY	A	B	C	D	E
S-35	1360/55	545 (600-1)	1360-1 5/8 545 (600-1 1/8)	1360-1 3/4 545 (600-1 3/4)	1360-2 545 (600-2)
CIRCLING	1400-1 573 (600-1)	1420-1 593 (600-1)	1620-2 1/4 793 (800-2 1/4)	1640-2 3/4 813 (900-2 3/4)	1760-3 933 (1000-3)

NC-3, 16 APR 2026 to 14 MAY 2026

NC-3, 16 APR 2026 to 14 MAY 2026