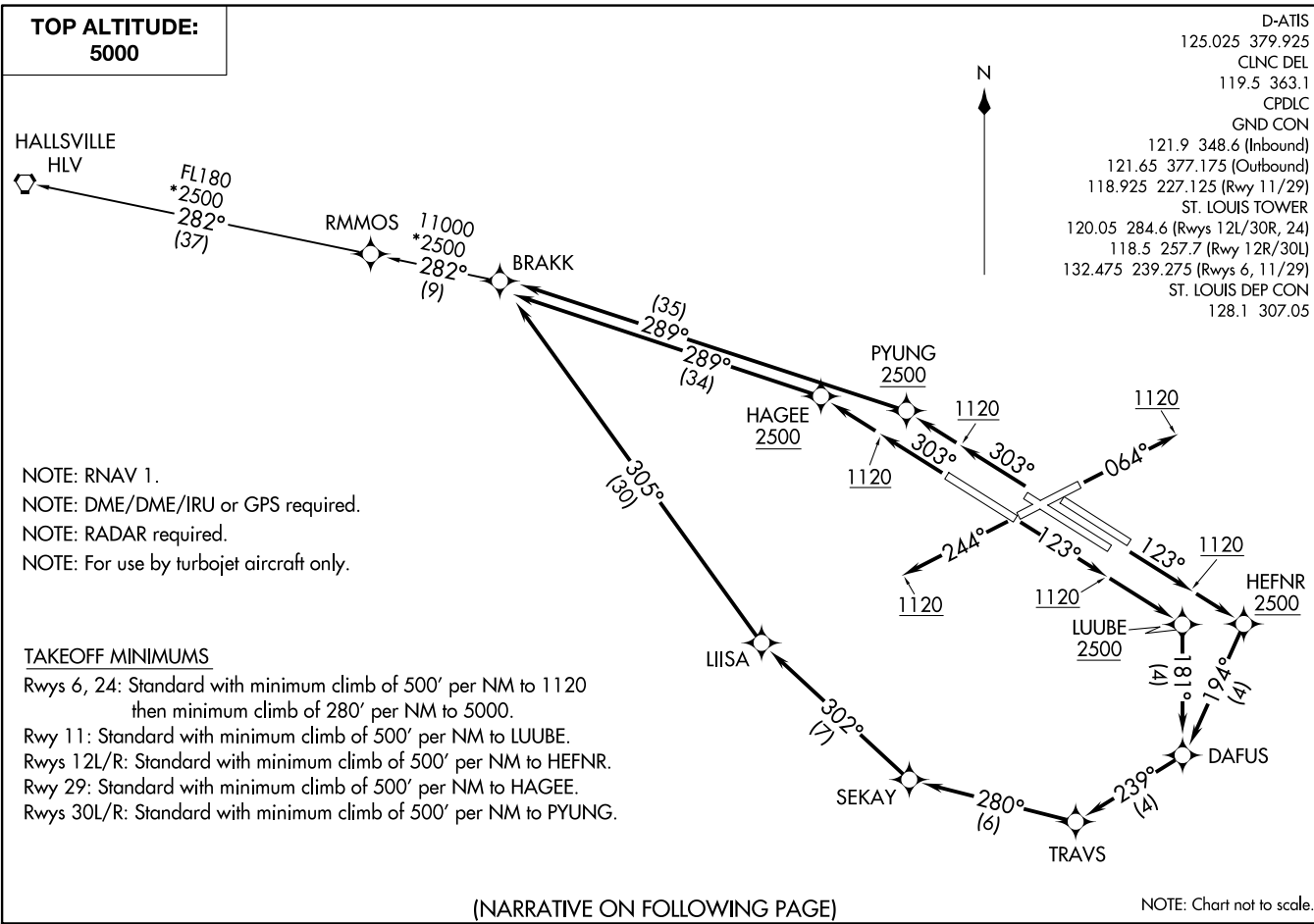


BRAKK FIVE DEPARTURE (RNAV)  
(BRAKK5.BRAKK) 19JUL18

(BRAKK5.BRAKK) 18312  
BRAKK FIVE DEPARTURE (RNAV)

AL-360 (FAA)

ST LOUIS LAMBERT INTL (STL)  
ST LOUIS, MISSOURI



NOTE: RNAV 1.  
 NOTE: DME/DME/IRU or GPS required.  
 NOTE: RADAR required.  
 NOTE: For use by turbojet aircraft only.

**TAKEOFF MINIMUMS**

Rwys 6, 24: Standard with minimum climb of 500' per NM to 1120 then minimum climb of 280' per NM to 5000.  
 Rwy 11: Standard with minimum climb of 500' per NM to LUUBE.  
 Rwys 12L/R: Standard with minimum climb of 500' per NM to HEFNR.  
 Rwy 29: Standard with minimum climb of 500' per NM to HAGEE.  
 Rwys 30L/R: Standard with minimum climb of 500' per NM to PYUNG.

(NARRATIVE ON FOLLOWING PAGE)

ST LOUIS, MISSOURI  
ST LOUIS LAMBERT INTL (STL)



DEPARTURE ROUTE DESCRIPTION

TAKEOFF RUNWAY 6: Climb heading 064° to 1120, then as assigned by ATC, expect RADAR vectors to BRAKK. Thence. . . .

TAKEOFF RUNWAY 24: Climb heading 244° to 1120, then as assigned by ATC, expect RADAR vectors to BRAKK. Thence. . . .

TAKEOFF RUNWAY 11: Climb heading 123° to 1120, then direct LUUBE, cross LUUBE at or above 2500, then on depicted route to BRAKK. Thence. . . .

TAKEOFF RUNWAYS 12L/R: Climb heading 123° to 1120, then direct HEFNR, cross HEFNR at or above 2500, then on depicted route to BRAKK. Thence. . . .

TAKEOFF RUNWAY 29: Climb heading 303° to 1120, then direct HAGEE, cross HAGEE at or above 2500, then on depicted route to BRAKK. Thence. . . .

TAKEOFF RUNWAYS 30L/R: Climb heading 303° to 1120, then direct PYUNG, cross PYUNG at or above 2500, then on depicted route to BRAKK. Thence. . . .

. . . . (transition). Maintain 5000, expect filed altitude 10 minutes after departure.

HALLSVILLE TRANSITION (BRAKK5.HLV)

NC-3, 16 APR 2026 to 14 MAY 2026

NC-3, 16 APR 2026 to 14 MAY 2026