

# EEMOS FIVE DEPARTURE (RNAV)

AL-360 (FAA)

ST LOUIS LAMBERT INTL (STL)  
ST. LOUIS, MISSOURI

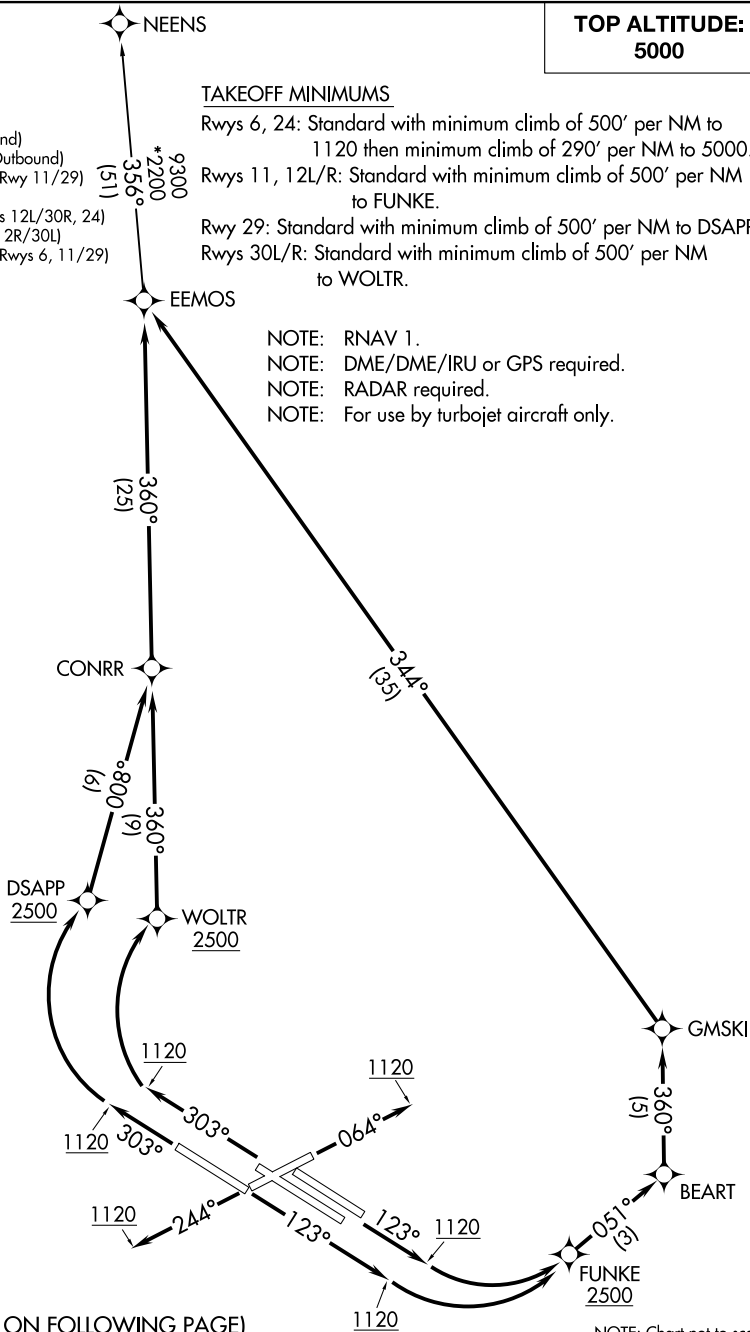
D-ATIS  
125.025 379.925  
CLNC DEL  
119.5 363.1  
CPDLC  
GND CON  
121.9 348.6 (Inbound)  
121.65 377.175 (Outbound)  
118.925 227.125 (Rwy 11/29)  
ST. LOUIS TOWER  
120.05 284.6 (Rwys 12L/30R, 24)  
118.5 257.7 (Rwy 12R/30L)  
132.475 239.275 (Rwys 6, 11/29)  
ST. LOUIS DEP CON  
119.15 335.5

**TOP ALTITUDE:  
5000**

### TAKEOFF MINIMUMS

Rwys 6, 24: Standard with minimum climb of 500' per NM to 1120 then minimum climb of 290' per NM to 5000.  
Rwys 11, 12L/R: Standard with minimum climb of 500' per NM to FUNKE.  
Rwy 29: Standard with minimum climb of 500' per NM to DSAPP.  
Rwys 30L/R: Standard with minimum climb of 500' per NM to WOLTR.

NOTE: RNAV 1.  
NOTE: DME/DME/IRU or GPS required.  
NOTE: RADAR required.  
NOTE: For use by turbojet aircraft only.



NC-3, 16 APR 2026 to 14 MAY 2026

NC-3, 16 APR 2026 to 14 MAY 2026

(NARRATIVE ON FOLLOWING PAGE)

NOTE: Chart not to scale.

# EEMOS FIVE DEPARTURE (RNAV)



DEPARTURE ROUTE DESCRIPTION

TAKEOFF RUNWAY 6: Climb heading 064° to 1120, then as assigned by ATC, expect RADAR vectors to EEMOS. Thence. . . .

TAKEOFF RUNWAY 24: Climb heading 244° to 1120, then as assigned by ATC, expect RADAR vectors to EEMOS. Thence. . . .

TAKEOFF RUNWAYS 11, 12L/R: Climb heading 123° to 1120, then left turn direct FUNKE, cross FUNKE at or above 2500, then on depicted route to EEMOS. Thence. . . .

TAKEOFF RUNWAY 29: Climb heading 303° to 1120, then right turn direct DSAPP, cross DSAPP at or above 2500, then on depicted route to EEMOS. Thence. . . .

TAKEOFF RUNWAYS 30L/R: Climb heading 303° to 1120, then right turn direct WOLTR, cross WOLTR at or above 2500, then on depicted route to EEMOS. Thence. . . .

. . . . (transition). Maintain 5000, expect filed altitude 10 minutes after departure.

NEENS TRANSITION (EEMOS5.NEENS)

NC-3, 16 APR 2026 to 14 MAY 2026

NC-3, 16 APR 2026 to 14 MAY 2026