

LOC/DME I-SJW <b>111.3</b> Chan <b>50</b>	APP CRS <b>303°</b>	Rwy Ldg TDZE Apt Elev	<b>9013</b> <b>605</b> <b>618</b>
---	------------------------	-----------------------------	---

# ILS or LOC RWY 30R

ST LOUIS LAMBERT INTL (STL)

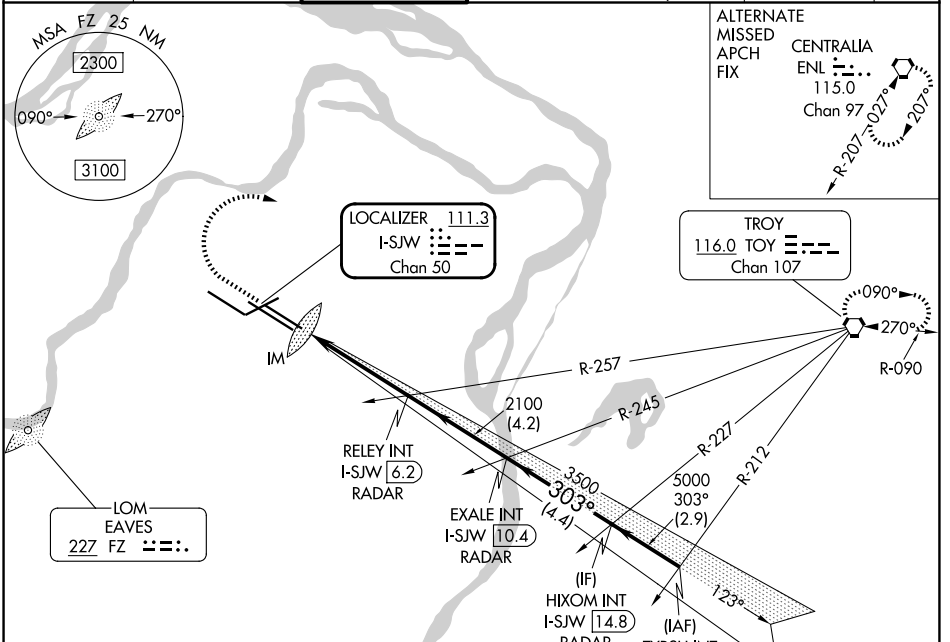
**RADAR required for procedure entry.**

▼ For inop ALS, increase S-ILS 30R Cat E visibility to RVR 4000 and S-LOC 30R Cat C/D/E visibility to 1 $\frac{3}{8}$  SM. Simultaneous approach authorized with Rwy 29. Simultaneous approach authorized with Rwy 30L requires use of vertical guidance; maintain last assigned altitude until established on glideslope.

ALSF-2

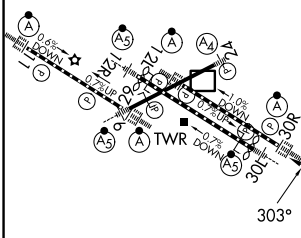
MISSED APPROACH: Climb to 1020 then climbing right turn to 3000 direct TOY VORTAC and hold.

D-ATIS <b>125.025</b> <b>379.925</b>	ST. LOUIS APP CON <b>132.125 360.6</b>	ST. LOUIS TOWER <b>120.05 284.6</b>	GND CON <b>121.9 348.6</b> (Inbound) <b>121.65 377.175</b> (Outbound) <b>118.925 227.125</b> (Rwy 11/29)	CLNC DEL <b>119.5 363.1</b>	CPDLC
--	---	--	---	--------------------------------	-------



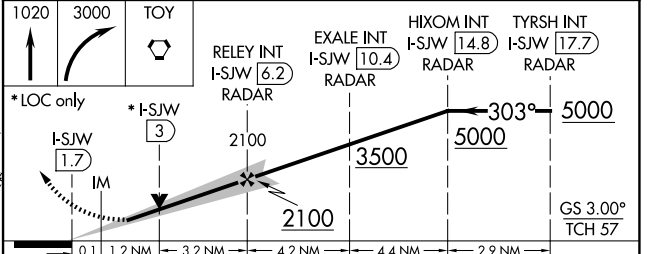
ELEV 618	<b>D</b>	TDZE 605
----------	----------	----------

Rwy 6-24 7603 X 150  
Rwy 11-29 9000 X 150  
Rwy 12L-30R 9013 X 150  
Rwy 12R-30L 11020 X 150



HIRL all Rwys  
TDZ/CL Rwys 11, 12L, 12R, 29, and 30R  
FAF to MAP 4.5 NM

Knots	60	90	120	150	180
Min:Sec	4:30	3:00	2:15	1:48	1:30



CATEGORY	A	B	C	D	E
S-ILS 30R	805/18 200 (200- $\frac{1}{2}$ )				
S-LOC 30R	1080/24 475 (500- $\frac{1}{2}$ )		1080/50 475 (500-1)		

NC-3, 16 APR 2026 to 14 MAY 2026

NC-3, 16 APR 2026 to 14 MAY 2026