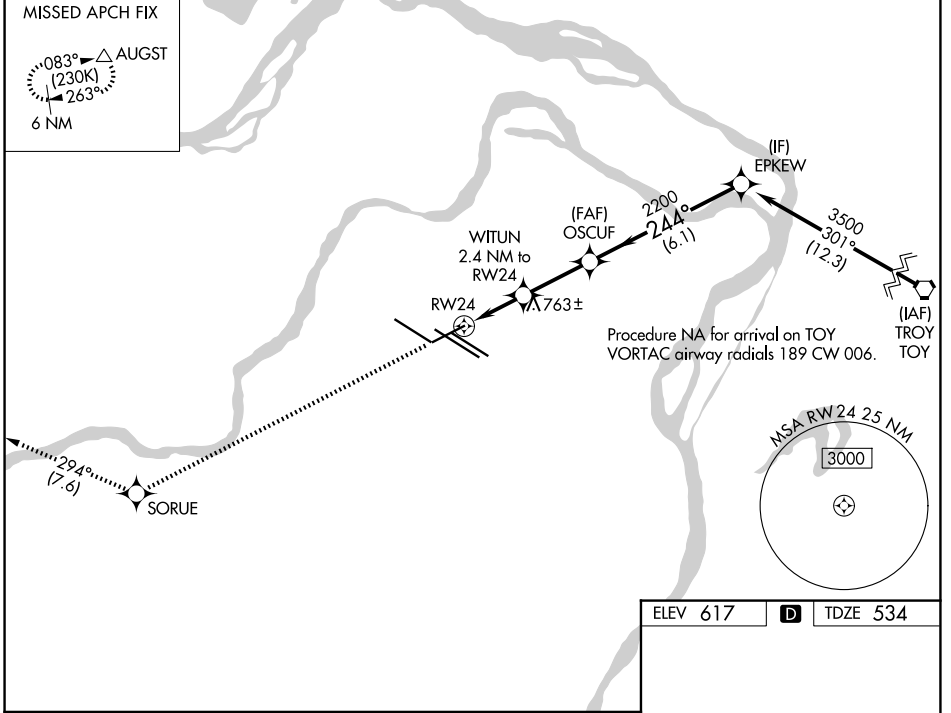


| | | | |
|--|------------------------|-----------------------------|---|
| WAAS CH 87021 W24A | APP CRS 244° | Rwy Ldg TDZE Apt Elev | 7603 534 617 |
|--|------------------------|-----------------------------|---|

RNAV (GPS) RWY 24

ST LOUIS LAMBERT INTL (STL)

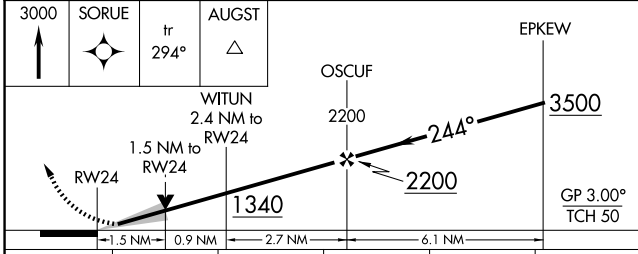
| | | | | | |
|---|---|--|---|--|--------------------------------|
| RNP APCH - GPS. | | MALSS | | MISSED APPROACH: Climb to 3000 direct SORUE and on track 294° to AUGST and hold. | |
| ▼ For uncompensated Baro-VNAV systems, LNAV/VNAV NA below -16°C or above 54°C. Inop table does not apply to LPV. For inop ALS, increase LNAV/VNAV Cat E visibility to 1 3/8 SM and LNAV Cat E visibility to 1 3/8 SM. | | MALS | | | |
| D-ATIS 125.025 379.925 | ST. LOUIS APP CON 132.125 360.6 | ST. LOUIS TOWER 120.05 284.6 | GND CON 121.9 348.6 (Inbound) 121.65 377.175 (Outbound) 118.925 227.125 (Rwy 11/29) | | CLNC DEL 119.5 363.1 |
| | | | CPDLC | | |



NC-3, 16 APR 2026 to 14 MAY 2026

NC-3, 16 APR 2026 to 14 MAY 2026

| | | |
|----------|----------|----------|
| ELEV 617 | D | TDZE 534 |
|----------|----------|----------|



| | | | | | |
|--------------|-------------------------|---------------|------------|---|-----------------|
| CATEGORY | A | B | C | D | E |
| LPV DA | 734/40 200 (200-3/4) | | | | |
| LNAV/VNAV DA | 1015/60 481 (400-1 1/4) | | | | |
| LNAV MDA | 1080/40 | 546 (500-3/4) | 1080-1 3/8 | | 546 (500-1 3/8) |

Rwy 6-24 7603 X 150
Rwy 11-29 9000 X 150
Rwy 12L-30R 9013 X 150
Rwy 12R-30L 11020 X 150

HIRL all Rwys
TDZ/CL Rwys 11, 12L, 12R, 29, and 30R