

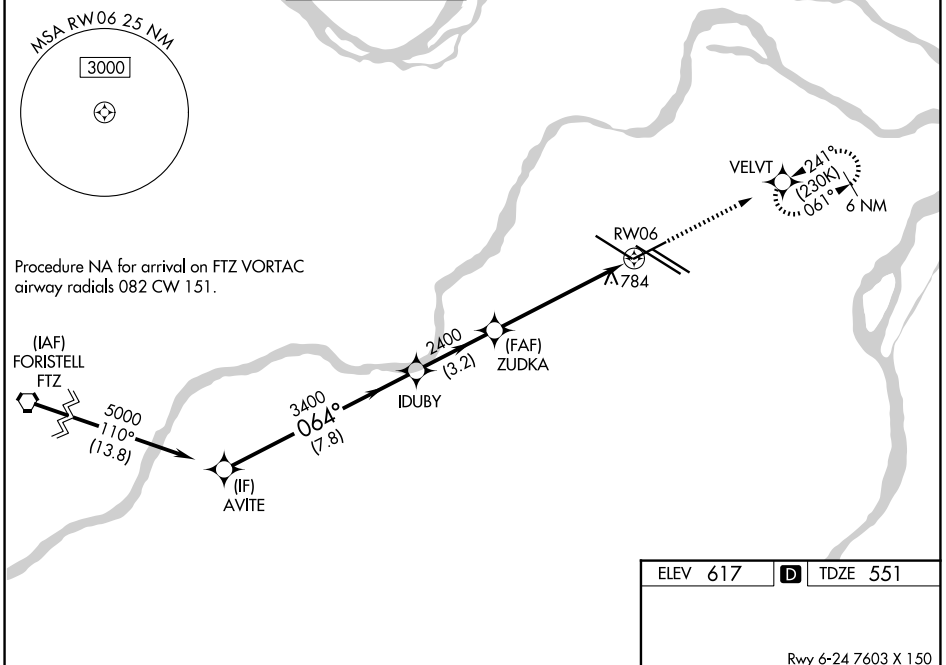
WAAS CH 93747 W06A	APP CRS 064°	Rwy Ldg TDZE Apt Elev	7323 551 617
--	------------------------	-----------------------------	---

RNAV (GPS) RWY 6

ST LOUIS LAMBERT INTL (STL)

RNP APCH - GPS.	MALSR 	MISSED APPROACH: Climb to 3000 direct VELVT and hold, continue climb-in-hold to 3000.
▽ For uncompensated Baro-VNAV systems, LNAV/VNAV NA below -16°C or above 54°C. Rwy 6 helicopter visibility reduction below RVR 4000 NA. For inop ALS increase LPV all Cats visibility to RVR 5500; LNAV/VNAV all Cats visibility to 1 3/8 SM; LNAV Cat A and B visibility to RVR 5500; and LNAV Cat C, D, and E visibility to 1 3/8 SM.		

D-ATIS 125.025 379.925	ST. LOUIS APP CON 132.125 360.6	ST. LOUIS TOWER 132.475 239.275	GND CON 121.9 348.6 (Inbound) 121.65 377.175 (Outbound) 118.925 227.125 (11/29)	CLNC DEL 119.5 363.1	CPDLC
--	---	---	---	--------------------------------	-------



Procedure NA for arrival on FTZ VORTAC airway radials 082 CW 151.

NC-3, 16 APR 2026 to 14 MAY 2026

NC-3, 16 APR 2026 to 14 MAY 2026

ELEV 617	D TDZE 551
----------	-------------------

Rwy 6-24 7603 X 150
Rwy 11-29 9000 X 150
Rwy 12L-30R 9013 X 150
Rwy 12R-30L 11020 X 150

HIRL all Rwys
TDZ/CL Rwys 11, 12L, 12R, 29, and 30R

AVITE	IDUBY	ZUDKA	3000	VELVT	
5000	3400	2400	↑	★	
GP 3.00°					
TCH 54					
	7.8 NM	3.2 NM	4.3 NM	1.4	
CATEGORY	A	B	C	D	E
LPV DA		910/40	359 (300-3/4)		
LNAV/VNAV DA		1040/50	489 (500-1)		
LNAV MDA	1040/40	489 (500-3/4)	1040/50	489 (500-1)	