

RNAV (RNP) Z RWY 12R

ST LOUIS LAMBERT INTL (STL)

APP CRS	Rwy Ldg	10553
123°	TDZE	540
	Apt Elev	617

RNP AR APCH - GPS. Authorization required from HRBEE or RRIIP: RF.

RADAR required for procedure entry.

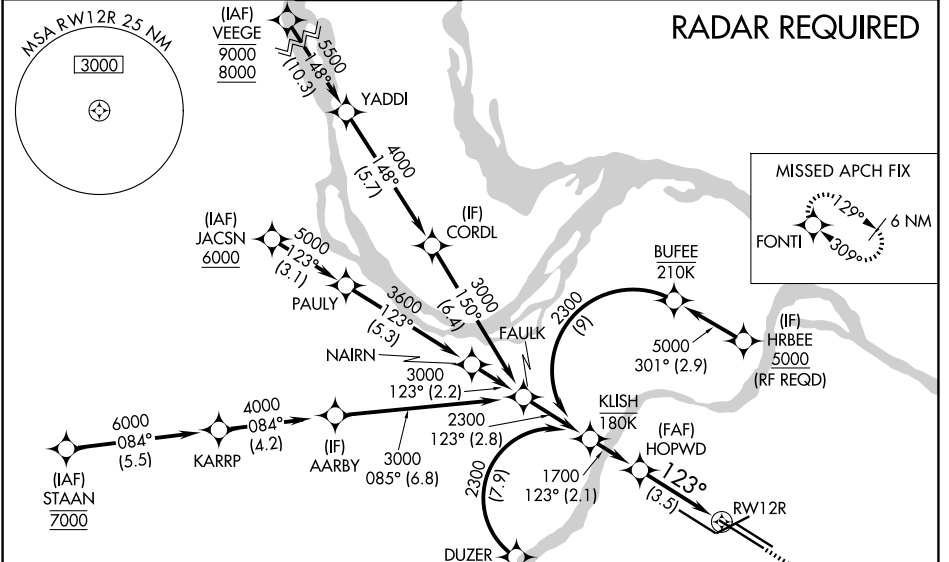
▼ For uncompensated Baro-VNAV systems, procedure NA below -16°C or above 54°C. For inop ALS, increase RNP 0.30 all Cats visibility to 1 3/8 SM. Simultaneous approach authorized with Rwy 11 except for arrivals at RRIIP and HRBEE. Use of FD or AP required during simultaneous operations.

MALSR



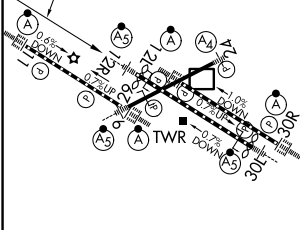
MISSED APPROACH: Climb to 5000 on track 123° to FONTI and hold, continue climb-in-hold to 5000.

D-ATIS 125.025 379.925	ST. LOUIS APP CON 132.125 360.6	ST. LOUIS TOWER 118.5 257.7	GND CON 121.9 348.6 (Inbound) 121.65 377.175 (Outbound) 118.925 227.125 (Rwy 11/29)	CLNC DEL 119.5 363.1	CPDLC
--	---	---------------------------------------	---	--------------------------------	-------



ELEV 617	D TDZE 540
----------	-------------------

Rwy 6-24 7603 X 150
Rwy 11-29 9000 X 150
Rwy 12L-30R 9013 X 150
Rwy 12R-30L 11020 X 150



HOPWD	VGSi and RNAV glidepath not coincident (VGSi Angle 3.00/TCH 71).				5000	FONTI
1700	123°				↑	tr 123°
GP 3.00°	3.5 NM				RWY 12R	
TCH 54						
CATEGORY	A	B	C	D		
RNP 0.30 DA	998/60 458 (400-1 1/4)					
AUTHORIZATION REQUIRED						

NC-3, 16 APR 2026 to 14 MAY 2026

NC-3, 16 APR 2026 to 14 MAY 2026