

APP CRS 303°	Rwy Ldg TDZE Apt Elev	9000 580 618
------------------------	-----------------------------	---

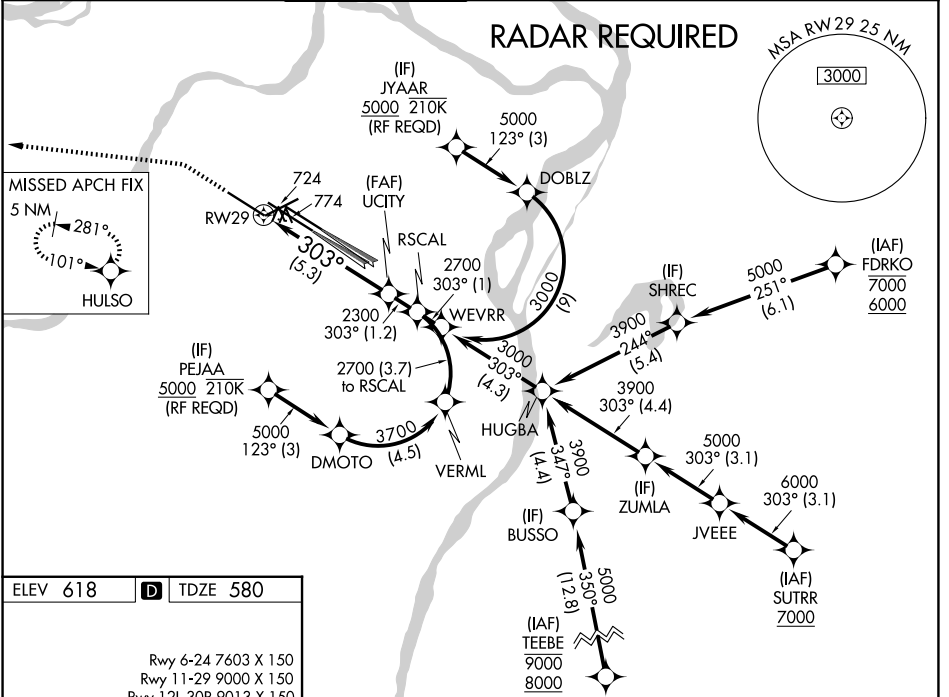
RNAV (RNP) Z RWY 29

ST LOUIS LAMBERT INTL (STL)

▼ For uncompensated Baro-VNAV systems, procedure NA below -16°C (4°F) or above 54°C (130°F). Simultaneous approach authorized with Rwy 30L/R. Use of FD or AP providing RNAV track guidance required during simultaneous operations. GPS required. For inop ALS, increase RNP 0.12 all Cats visibility to RVR 6000, increase RNP 0.17 all Cats visibility to 1½, and increase RNP 0.30 all Cats visibility to 1¼.

ALSF-2
 MISSED APPROACH: Climb to 1100 then climbing left turn to 3000 direct HULSO and hold.

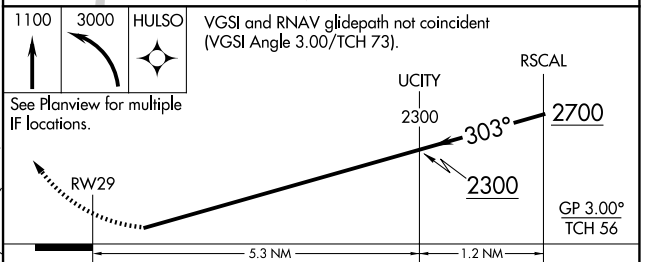
D-ATIS 125.025 379.925	ST. LOUIS APP CON 132.125 360.6	ST. LOUIS TOWER 132.475 239.275	GND CON 121.9 348.6 (Inbound) 121.65 377.175 (Outbound) 118.925 227.125 (Rwy 11/29)	CLNC DEL 119.5 363.1	CPDLC
--	---	---	---	--------------------------------	-------



ELEV 618 **D** TDZE 580

Rwy 6-24 7603 X 150
 Rwy 11-29 9000 X 150
 Rwy 12L-30R 9013 X 150
 Rwy 12R-30L 11020 X 150

HIRL all Rwys
 TDZ/CL Rwys 11, 12L, 12R, 29, and 30R



CATEGORY	A	B	C	D
RNP 0.12 DA		963/50	383 (400-1)	
RNP 0.17 DA		1035/50	455 (500-1)	
RNP 0.30 DA		1088/60	508 (500-1¼)	

AUTHORIZATION REQUIRED

NC-3, 16 APR 2026 to 14 MAY 2026

NC-3, 16 APR 2026 to 14 MAY 2026