

APP CRS	Rwy Ldg	<b>9013</b>
<b>303°</b>	TDZE	<b>605</b>
	Apt Elev	<b>618</b>

# RNAV (RNP) Z RWY 30R

ST LOUIS LAMBERT INTL (STL)

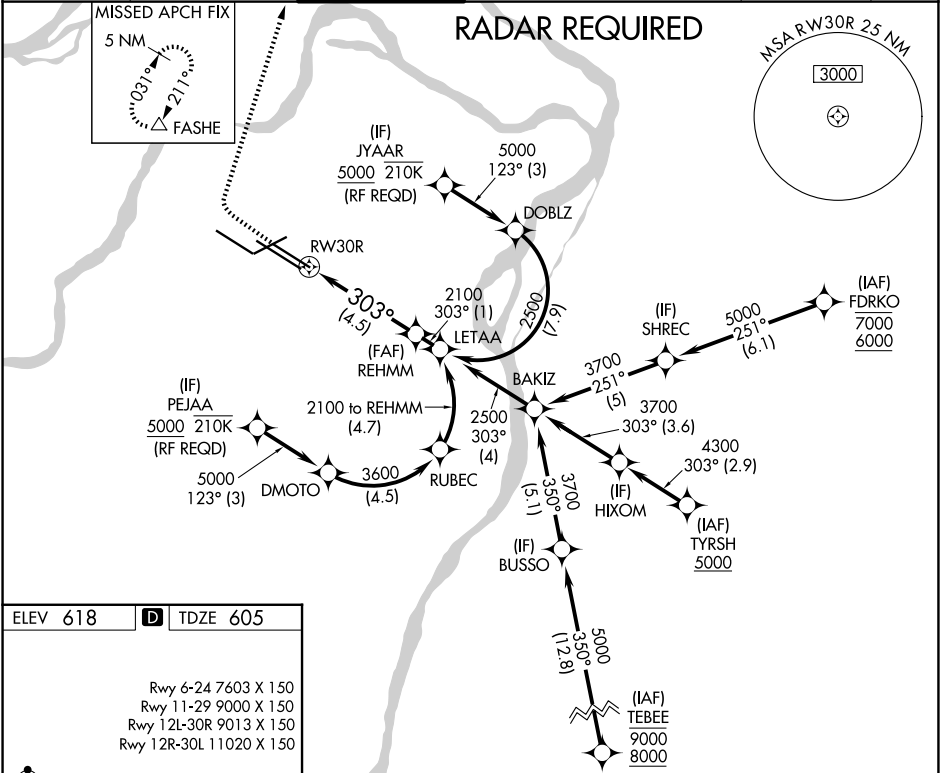
**▼** For uncompensated Baro-VNAV systems, procedure NA below -16°C (4°F) or above 54°C (130°F). GPS required. Simultaneous approach authorized with Rwy 29, except for arrivals at JYAAR and PEJAA. Use of FD or AP required during simultaneous operations. For inop ALS, increase RNP 0.30 all Cats visibility to RVR 6000.

ALSF-2



**MISSED APPROACH:** Climb to 1100 then climbing right turn to 3000 direct FASHE and hold.

D-ATIS <b>125.025</b> <b>379.925</b>	ST. LOUIS APP CON <b>132.125 360.6</b>	ST. LOUIS TOWER <b>120.05 284.6</b>	GND CON <b>121.9 348.6</b> (Inbound) <b>121.65 377.175</b> (Outbound) <b>118.925 227.125</b> (Rwy 11/29)	CLNC DEL <b>119.5 363.1</b>	CPDLC
--	---	--	---	--------------------------------	-------



NC-3, 16 APR 2026 to 14 MAY 2026

NC-3, 16 APR 2026 to 14 MAY 2026

ELEV 618 **D** TDZE 605

Rwy 6-24 7603 X 150  
Rwy 11-29 9000 X 150  
Rwy 12L-30R 9013 X 150  
Rwy 12R-30L 11020 X 150

HIRL all Rwys  
TDZ/CL Rwys 11, 12L, 12R, 29, and 30R

1100 3000 FASHE See planview for multiple IF locations.

REHMM 2100  
RW30R 303°  
GP 3.00°  
TCH 57

CATEGORY	A	B	C	D
RNP 0.30 DA		969/40	364 (400-¾)	

**AUTHORIZATION REQUIRED**