

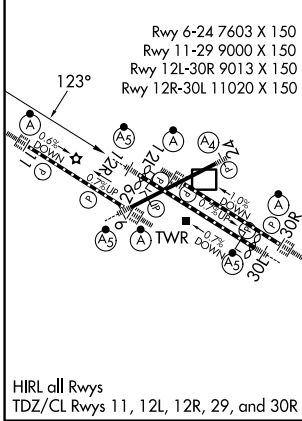
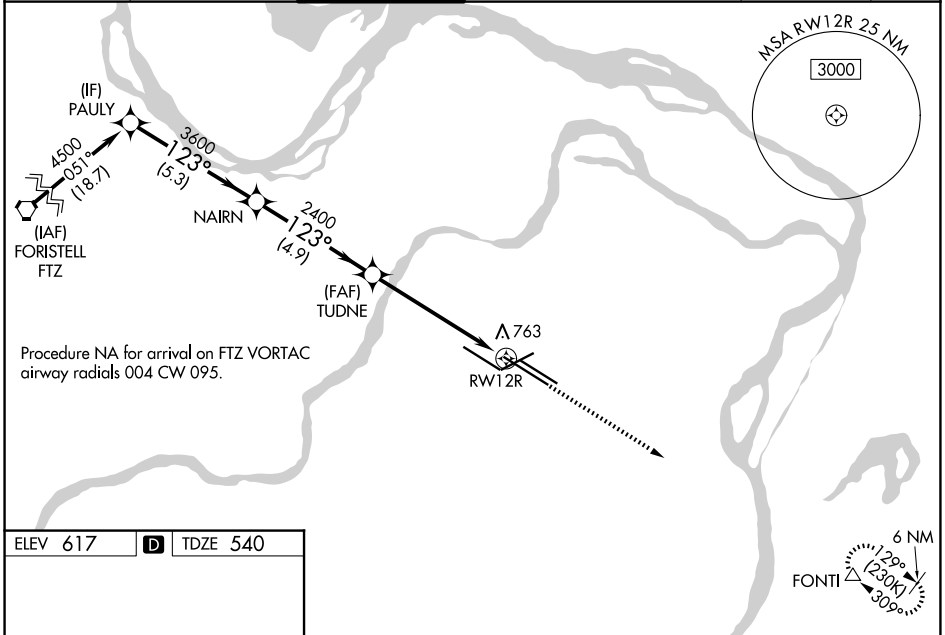
WAAS CH <b>78121</b> <b>W12B</b>	APP CRS <b>123°</b>	Rwy Ldg TDZE Apt Elev	<b>10552</b> <b>540</b> <b>617</b>
--	------------------------	-----------------------------	--

# RNAV (GPS) Y RWY 12R

ST LOUIS LAMBERT INTL (STL)

RNP APCH - GPS.		MALSR 	MISSED APPROACH: Climb to 5000 direct FONTI and hold, continue climb-in-hold to 5000.
▽ Rwy 12R helicopter visibility reduction below RVR 4000 NA. For uncompensated Baro-VNAV systems, LNAV/VNAV NA below -16°C or above 54°C. Simultaneous approach authorized with Rwy 11. LNAV procedure NA during simultaneous operations. Use of FD or AP required during simultaneous operations. For inop ALS, increase LPV Cat E visibility to RVR 4000, LNAV/VNAV all Cats visibility to 1½ SM, LNAV Cats A/B visibility to RVR 5500, and LNAV Cat C/D/E visibility to 1¾ SM.			

D-ATIS <b>125.025</b> <b>379.925</b>	ST. LOUIS APP CON <b>132.125 360.6</b>	ST. LOUIS TOWER <b>118.5 257.7</b>	GND CON <b>121.9 348.6</b> (Inbound) <b>121.65 377.175</b> (Outbound) <b>118.925 227.125</b> (Rwy 11/29)	CLNC DEL <b>119.5 363.1</b>	CPDLC
--	---	---------------------------------------	---	--------------------------------	-------



PAULY		VGS and RNAV glidepath not coincident (VGS Angle 3.00/TCH 71).			5000	FONTI
4500		123°			↑	△
3600		2400			1.3 NM to RWY 12R	
GP 3.00°		TCH 54			RWY 12R	
-5.3 NM		-4.9 NM		-4.4 NM		-1.3
CATEGORY	A	B	C	D	E	
LPV	DA	740/18			200 (200-½)	
LNAV/VNAV	DA	1103-1¼			563 (500-1¼)	
LNAV MDA	1020/40	480 (500-¾)		1020/50		480 (500-1)

NC-3, 16 APR 2026 to 14 MAY 2026

NC-3, 16 APR 2026 to 14 MAY 2026