

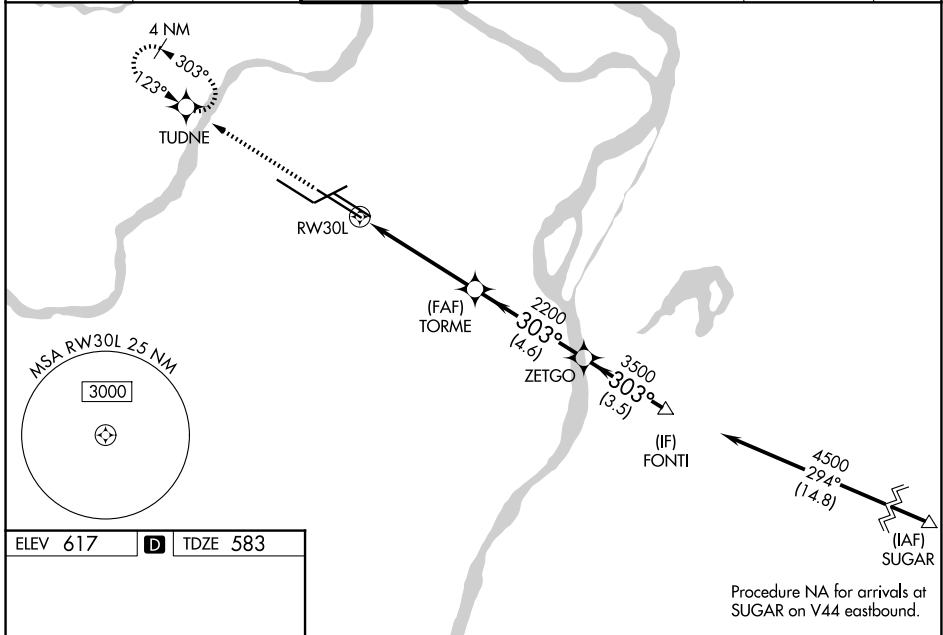
WAAS CH 99621 W30B	APP CRS 303°	Rwy Ldg 10679 TDZE 583 Apt Elev 617
--	------------------------	--

RNAV (GPS) Y RWY 30L

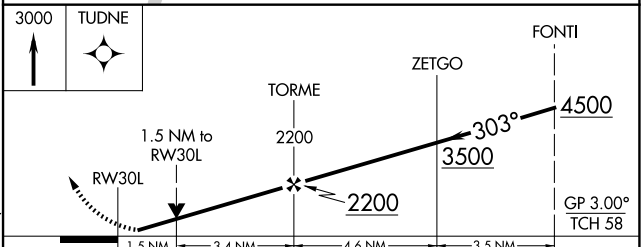
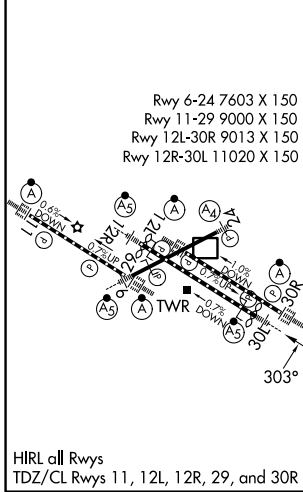
ST LOUIS LAMBERT INTL (STL)

RNP APCH - GPS.		MALSR 	MISSED APPROACH: Climb to 3000 direct TUDNE and hold, continue climb-in-hold to 3000.
Simultaneous approach authorized with Rwy 29. LNAV procedure NA during simultaneous operations. Use of FD or AP required during simultaneous operations. For uncompensated Baro-VNAV systems, LNAV/VNAV NA below -18°C or above 54°C. Rwy 30L helicopter visibility reduction below RVR 4000 NA. For inop ALS, increase LNAV/VNAV all Cats visibility to RVR 6000 and LNAV Cat A/B visibility to RVR 5500. *RVR 1800 authorized with use of FD or AP or HUD to DA.			

D-ATIS 125.025 379.925	ST. LOUIS APP CON 132.125 360.6	ST. LOUIS TOWER 118.5 257.7	GND CON 121.9 348.6 (Inbound) 121.65 377.175 (Outbound) 118.925 227.125 (Rwy 11/29)	CLNC DEL 119.5 363.1	CPDLC
--	---	---------------------------------------	---	--------------------------------	-------



ELEV 617	D	TDZE 583
----------	----------	----------



CATEGORY	A	B	C	D
LPV DA*	783/24		200 (200-½)	
LNAV/VNAV DA	974/40		391 (400-¾)	
LNAV MDA	1120/40	537 (600-¾)	1120/55	537 (600-1)

NC-3, 16 APR 2026 to 14 MAY 2026

NC-3, 16 APR 2026 to 14 MAY 2026