

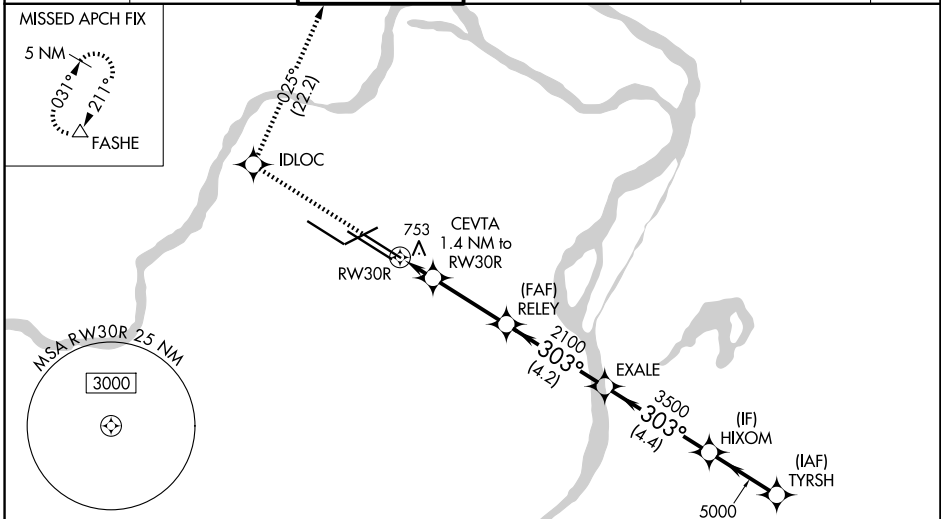
WAAS CH 73000 W30A	APP CRS 303°	Rwy Ldg TDZE Apt Elev	9013 605 617
--	------------------------	-----------------------------	---

RNAV (GPS) Y RWY 30R

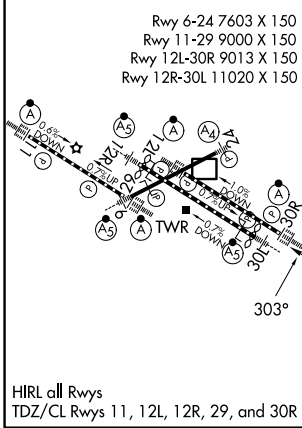
ST LOUIS LAMBERT INTL (STL)

RNP APCH - GPS.		ALSF-2 	MISSED APPROACH: Climb to 3000 direct IDLOC and on track 025° to FASHE and hold.
RADAR required for procedure entry.			
<p>▼ For uncompensated Baro-VNAV systems, LNAV/VNAV NA below -15°C or above 54°C. LNAV procedure NA during simultaneous operations. Use of FD or AP required during simultaneous operations. Simultaneous approach authorized with Rwy 29. For inop ALS, increase LPV Cat E visibility to RVR 4000, LNAV/VNAV all Cats visibility to RVR 4500, LNAV Cat C/D/E visibility to RVR 6000.</p>			

D-ATIS 125.025 379.925	ST. LOUIS APP CON 132.125 360.6	ST. LOUIS TOWER 120.05 284.6	GND CON 121.9 348.6 (Inbound) 121.65 377.175 (Outbound) 118.925 227.125 (Rwy 11/29)	CLNC DEL 119.5 363.1	CPDLC
--	---	--	---	--------------------------------	-------



ELEV 617	D	TDZE 605
----------	----------	----------



	3000	IDLOC	FASHE	HIXOM	TYRSH
	↑	◆	tr 025°	△	
				EXALE	
		CEVTA 1.4 NM to RWY 30R	RELEY 2100	EXALE 3500	303° 5000
		RWY 30R			GP 3.00° TCH 57
		1.4	3.1 NM	4.2 NM	4.4 NM
		4.4 NM	2.9 NM		
CATEGORY	A	B	C	D	E
LPV DA		805/18		200 (200-½)	
LNAV/VNAV DA		914/24		309 (300-½)	
LNAV MDA	1020/24	415 (500-½)		1020/40 415 (500-¾)	

NC-3, 16 APR 2026 to 14 MAY 2026

NC-3, 16 APR 2026 to 14 MAY 2026